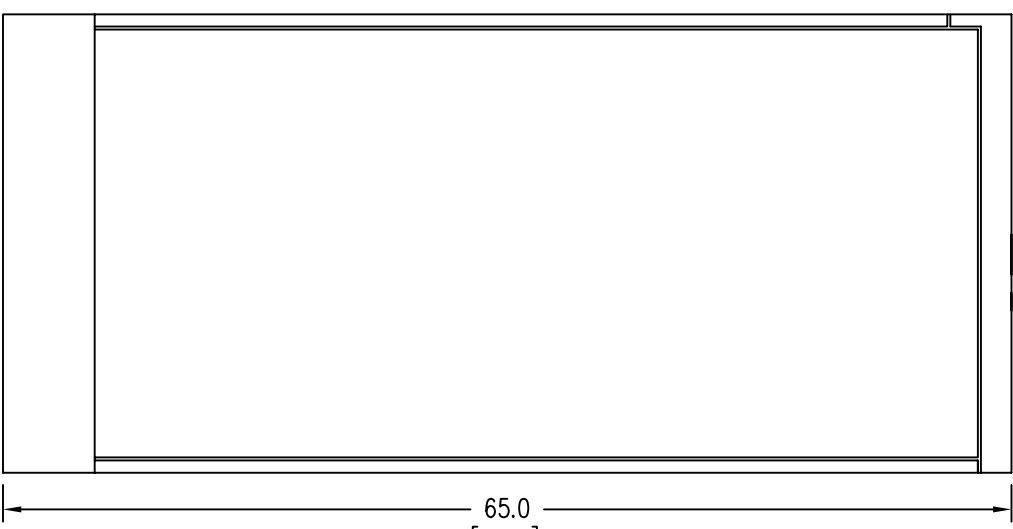


LEFT



FRONT



RIGHT

Notes: Unless otherwise specified, dimensions are in inches. Dimensions within brackets [] are in millimeters.
 Recommended clearance for serviceability is 36" [914] on the left side, 18" [457.2] on the right side and 18" [457.2] at the back of the system.

LTI Power Systems, Inc.

TEL. (440) 327-5050

10800 Middle Ave. Elyria, Ohio 44035

PROUPS B800 ENCLOSURE
 10-40KVA

10KVA WEIGHT W/SKID: 990 LBS. (446 kg)
 15KVA WEIGHT W/SKID: 1025 LBS. (461 kg)
 20KVA WEIGHT W/SKID: 1080 LBS. (486 kg)
 30KVA WEIGHT W/SKID: 1175 LBS. (529 kg)
 40KVA WEIGHT W/SKID: 1550 LBS. (698 kg)

LTI - PROUPS

CAD DWG NAME: RK333-A3

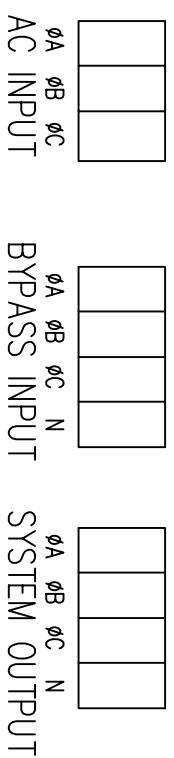
REV.
 3

- 1 -ELECTRONICS RACK
- 2 -INVERTER TRANSFORMER
- 3 -AC CHOKE
- 4 -INPUT AUTOTRANSFORMER
- 5 -RECT/STATIC SWITCH POWER PACKS
- 6 -INVERTER POWER PACKS
- 7 -MANUAL BYPASS CIRCUIT BREAKER
- 8 -RFI FILTERS
- 9 -INPUT/OUTPUT TERMINALS
- 10 -BATTERY TERMINALS
- 11 -BATTERY CIRCUIT BREAKER
- 12 -INVERTER FUSES (F3.0-3.1)
- 13 -BYPASS FUSES (F2.0-2.2)
- 14 -RECT CORRECTION FUSES (F10-10.2)
- 15 -RELAY INTERFACE TERMINALS
- 16 -AC OUTPUT CIRCUIT BREAKER
- 17 -AC INPUT CIRCUIT BREAKER
- 18 -K1 CONTACTOR
- 19 -600V/480V AUTOTRANSFORMER

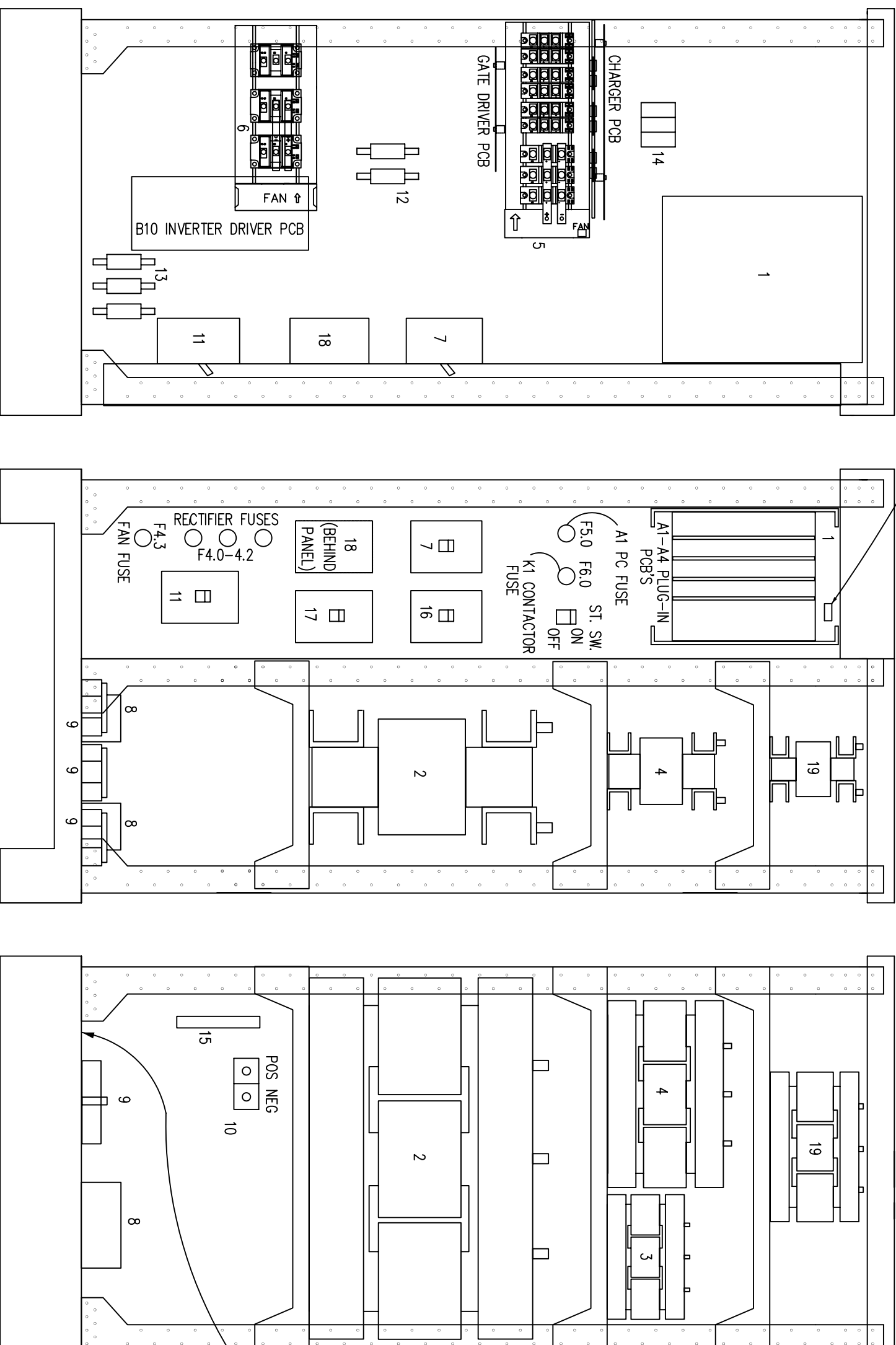
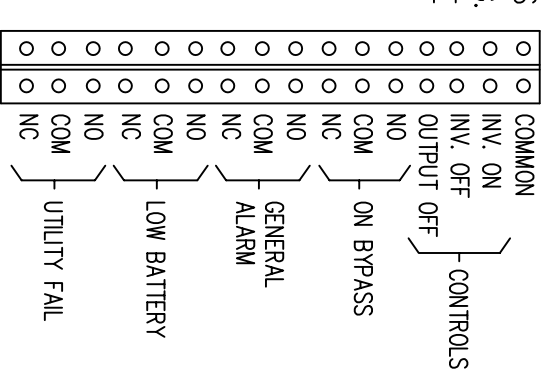
TERMINATION CONFIGURATION (BOTTOM, FRONT)

TERMINAL BLOCK CAPACITY: 2/0 TO 14 GA.

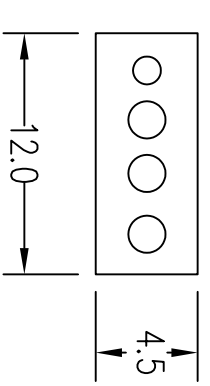
TORQUE: 50 IN/LBS



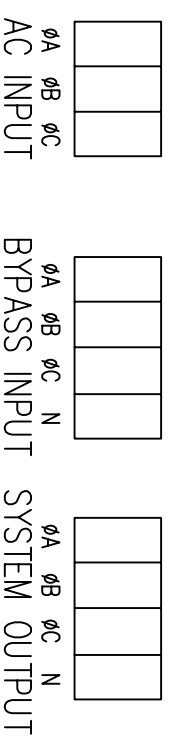
RELAY INTERFACE TERMINATIONS
TERMINAL CAPACITY: 14 TO 20 AWG.
RELAYS RATED 1A @ 24VDC, 0.5A @ 120VAC RESISTIVE



10KVA CONFIGURATION (600/208V)
1/2" 1/2" 3/4" 3/4"
CONDUIT CONDUIT CONDUIT CONDUIT
(BATTERY) (AC) (BYPASS) (OUTPUT)

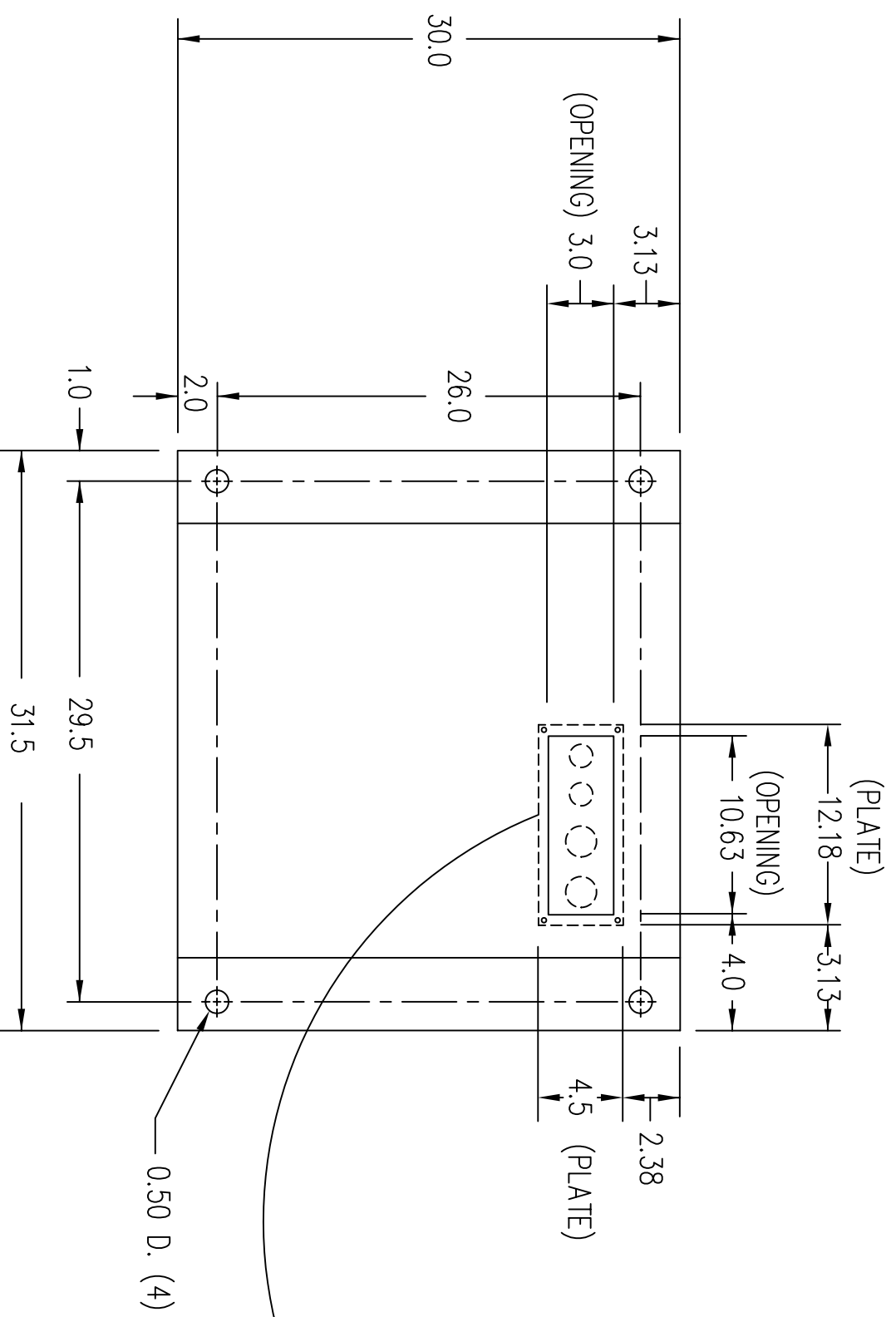


TERMINATION CONFIGURATION (BOTTOM, FRONT)
 TERMINAL BLOCK CAPACITY: 2/0 TO 14 GA.

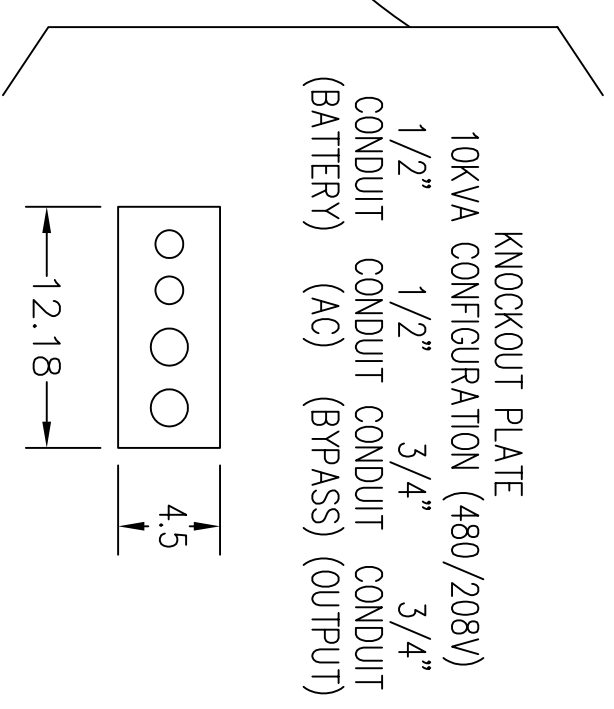


NOTE: ALL DIMENSIONS ARE IN INCHES UNLESS OTHERWISE SPECIFIED.

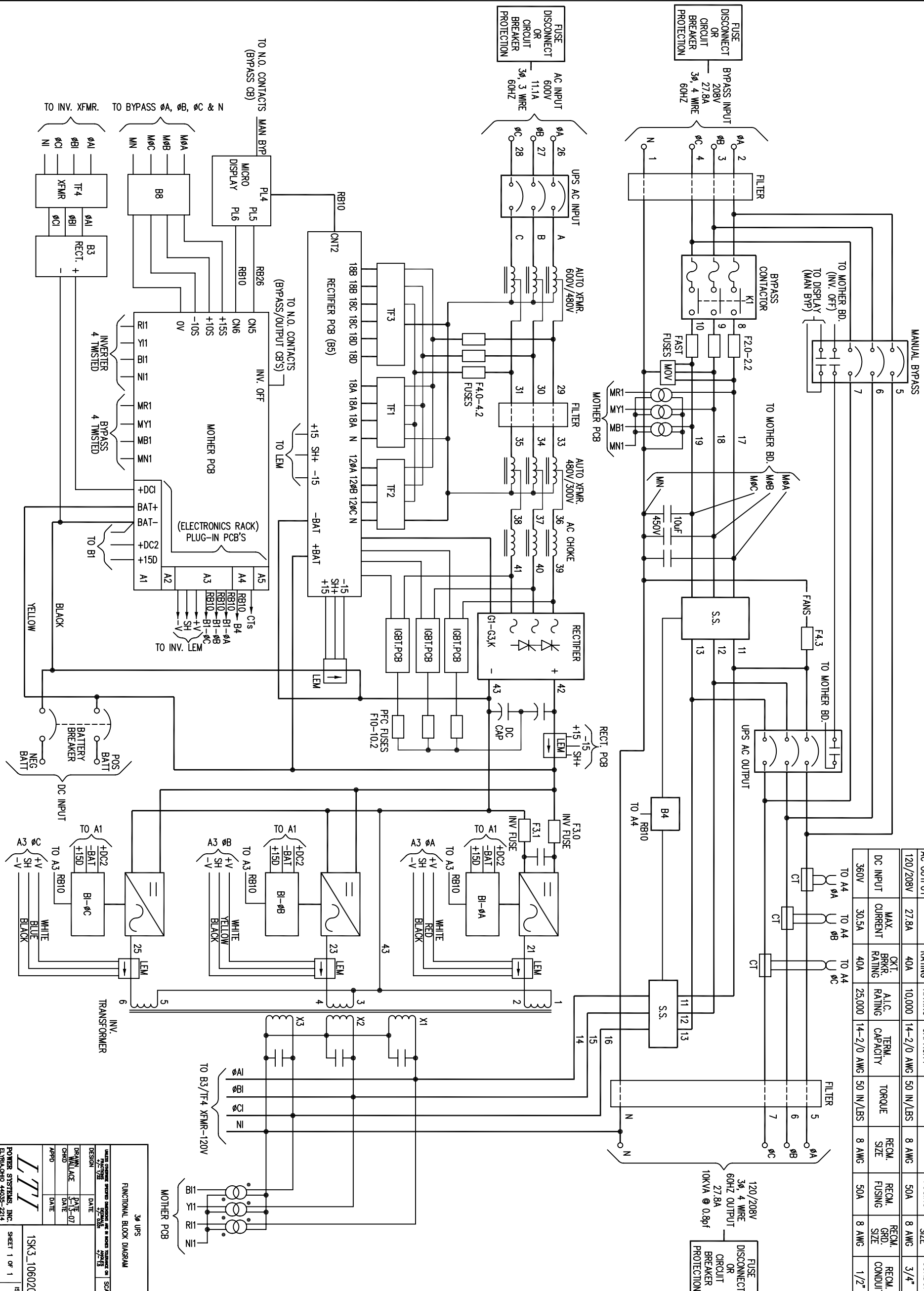
FRONT



(VIEW FROM BOTTOM OF CABINET)



- NOTES:
 1. WIRE SIZES BASED ON 90°C COPPER CONDUCTORS OPERATING IN 30°C AMBIENT AND NEC TABLES 250-95 AND 310-16. INCREASE CONDUCTOR SIZE FOR LONG RUNS.
 2. CLOCKWISE PHASE ROTATION MUST BE OBSERVED FOR BYPASS AND AC INPUTS.



AC INPUT	MAX. INPUT CURRENT	BRKR. RATING	A.I.C. RATING	TERM. CAPACITY	TORQUE	RECM. SIZE	RECM. FUSING	RECM. GRD. SIZE	RECM. CONDUIT
600V	11.1A	20A	14,000	14-2/0 AWG	50 IN/LBS	12 AWG	25A	8 AWG	1/2"
BYPASS INPUT/AC OUTPUT	27.8A	40A	10,000	14-2/0 AWG	50 IN/LBS	8 AWG	50A	8 AWG	3/4"
120/208V	30.5A	40A	25,000	14-2/0 AWG	50 IN/LBS	8 AWG	50A	8 AWG	1/2"

3k UPS
 FUNCTIONAL BLOCK DIAGRAM
 DATE: 2/2/98
 DRAWN: WALLACE
 CHECKED: [blank]
 APPROVED: [blank]
 1SK3_106020
 SHEET 1 OF 1
 POLYMER SYSTEMS, INC.
 EL PASO, TEXAS 79901