

Notes: Unless otherwise specified, dimensions are in inches. Dimensions within brackets [] are in millimeters.
 Recommended clearance for serviceability is 36" [914] on the left side, 18" [457.2] on the right side and 18" [457.2] at the back of the system.

LTI Power Systems, Inc.
 TEL. (440) 327-5050
 10800 Middle Ave. Elyria, Ohio 44035

ProUPS B800 ENCLOSURE
 10-40KVA
 10KVA WEIGHT: 860 LBS. (390 kg)
 15KVA WEIGHT: 950 LBS. (431 kg)
 20KVA WEIGHT: 1058 LBS. (480 kg)
 30KVA WEIGHT: 1150 LBS. (522 kg)
 40KVA WEIGHT: 1220 LBS. (554 kg)

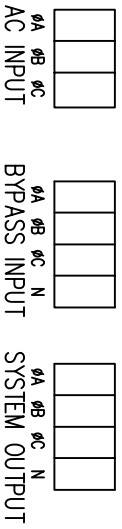
LTI - ProUPS
 CAD DWG NAME: RK333-A2

REV.
 2

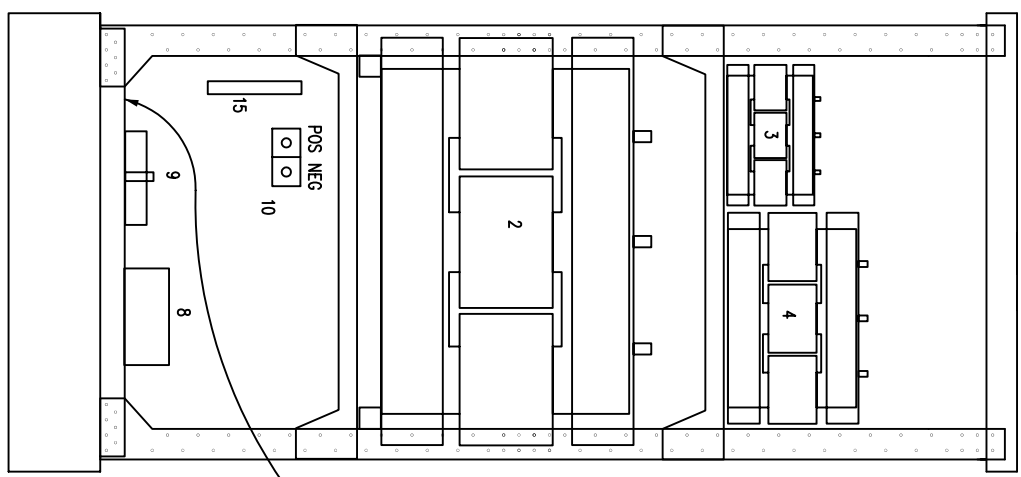
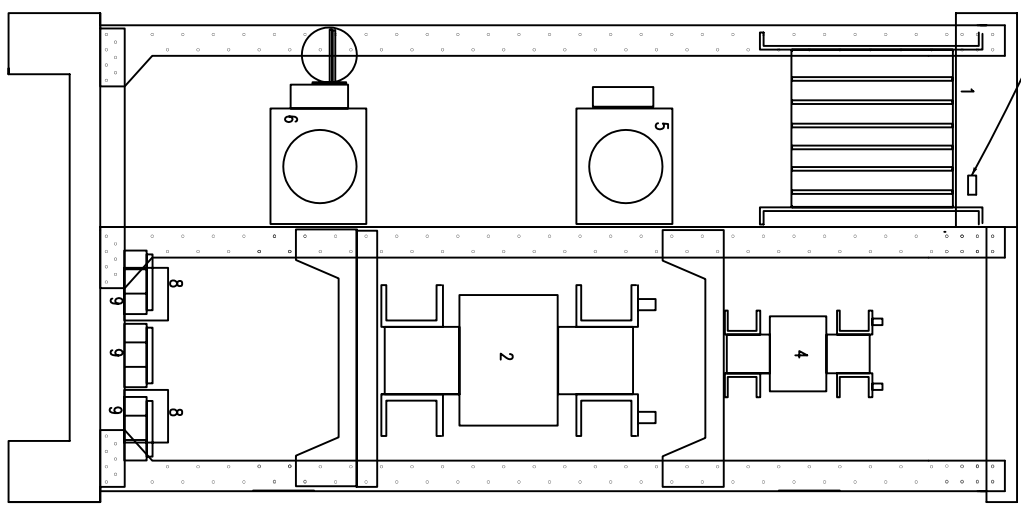
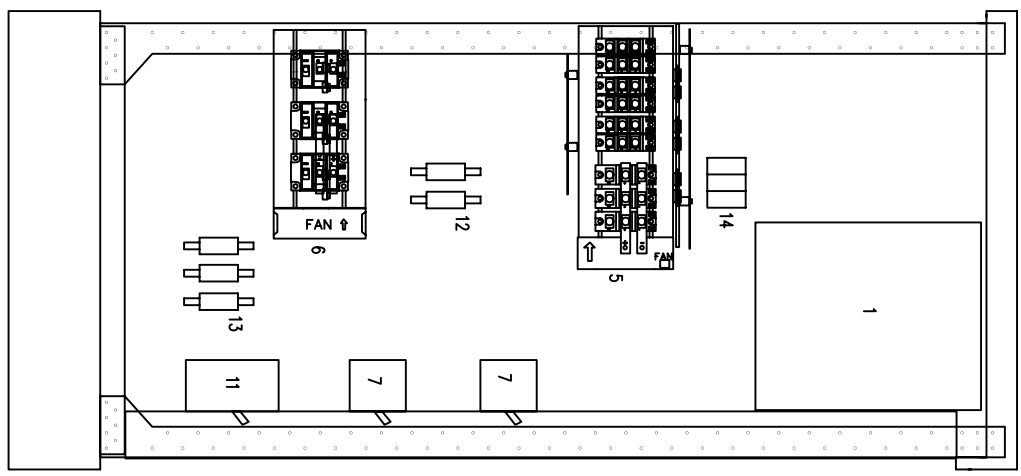
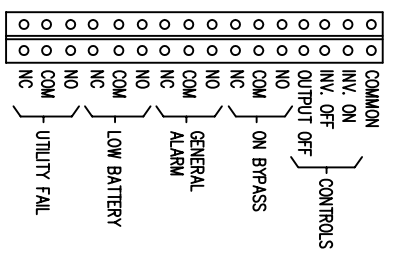
- 1 - ELECTRONICS RACK
- 2 - INVERTER TRF.
- 3 - AC CHOKE
- 4 - AUTOTRMR.
- 5 - RECT/STAT. SWITCH POWER PACKS
- 6 - INVERTER POWER PACK
- 7 - MGBS
- 8 - RFI FILTERS

- 9 - TERMINALS
- 10 - BATTERY TERMINALS
- 11 - BATTERY BREAKER
- 12 - INVERTER FUSES
- 13 - BYPASS FUSES
- 14 - pf CORRECTION FUSES
- 15 - RELAY INTERFACE TERMINALS

TERMINATION CONFIGURATION (BOTTOM, FRONT)
 TERMINAL BLOCK CAPACITY: 2/0 TO 14 GA.



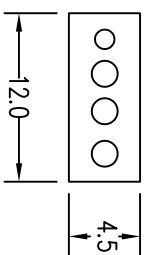
RELAY INTERFACE TERMINATIONS
 TERMINAL CAPACITY: 14 TO 20 AWG.
 RELAYS RATED 1A @ 24VDC, 0.5A @ 120VAC RESISTIVE



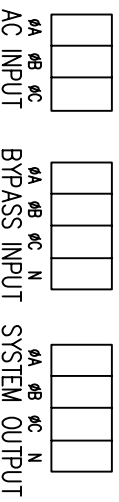
20KVA CONFIGURATION (208/208V)
 3/4" 1" 3/4" 3/4"
 CONDUIT CONDUIT CONDUIT CONDUIT
 (BATTERY) (AC) (BYPASS) (OUTPUT)

20KVA CONFIGURATION (480/208V)
 3/4" 1/2" 3/4" 3/4"
 CONDUIT CONDUIT CONDUIT CONDUIT
 (BATTERY) (AC) (BYPASS) (OUTPUT)

20KVA CONFIGURATION (480/480V)
 3/4" 1/2" 3/4" 3/4"
 CONDUIT CONDUIT CONDUIT CONDUIT
 (BATTERY) (AC) (BYPASS) (OUTPUT)

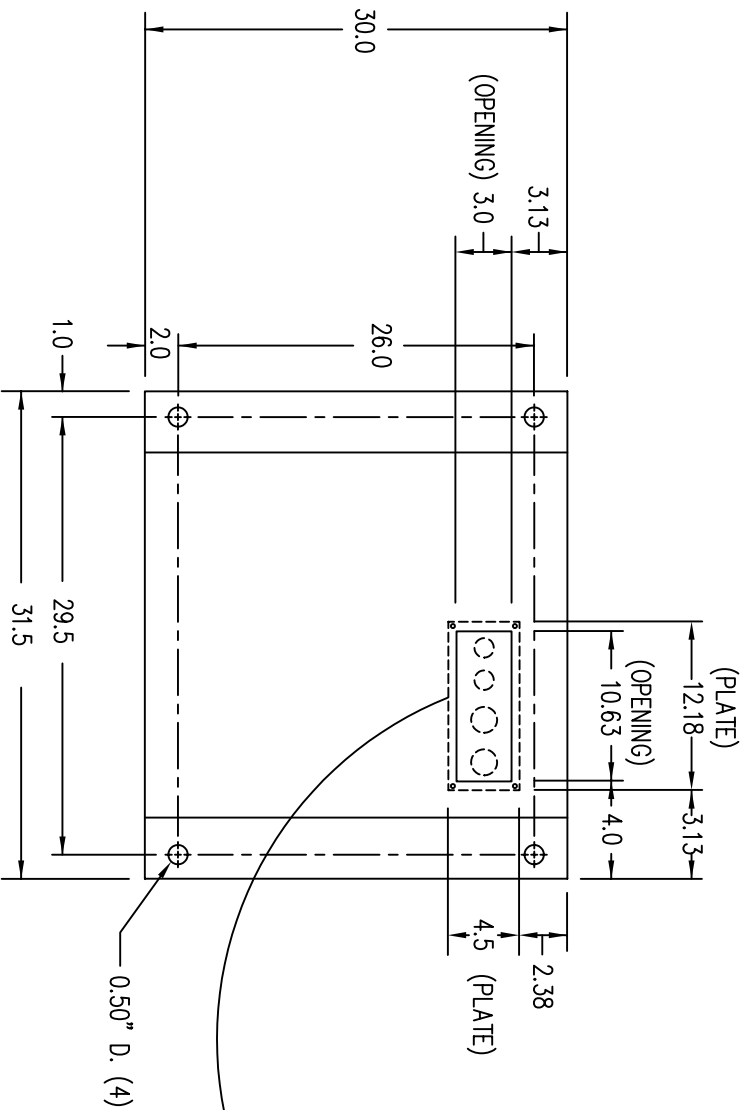


TERMINATION CONFIGURATION (BOTTOM, FRONT)
 TERMINAL BLOCK CAPACITY: 2/0 TO 14 GA.



NOTE: ALL DIMENSIONS ARE IN INCHES UNLESS OTHERWISE SPECIFIED.

FRONT

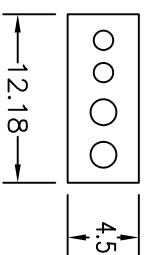


(VIEW FROM BOTTOM OF CABINET)

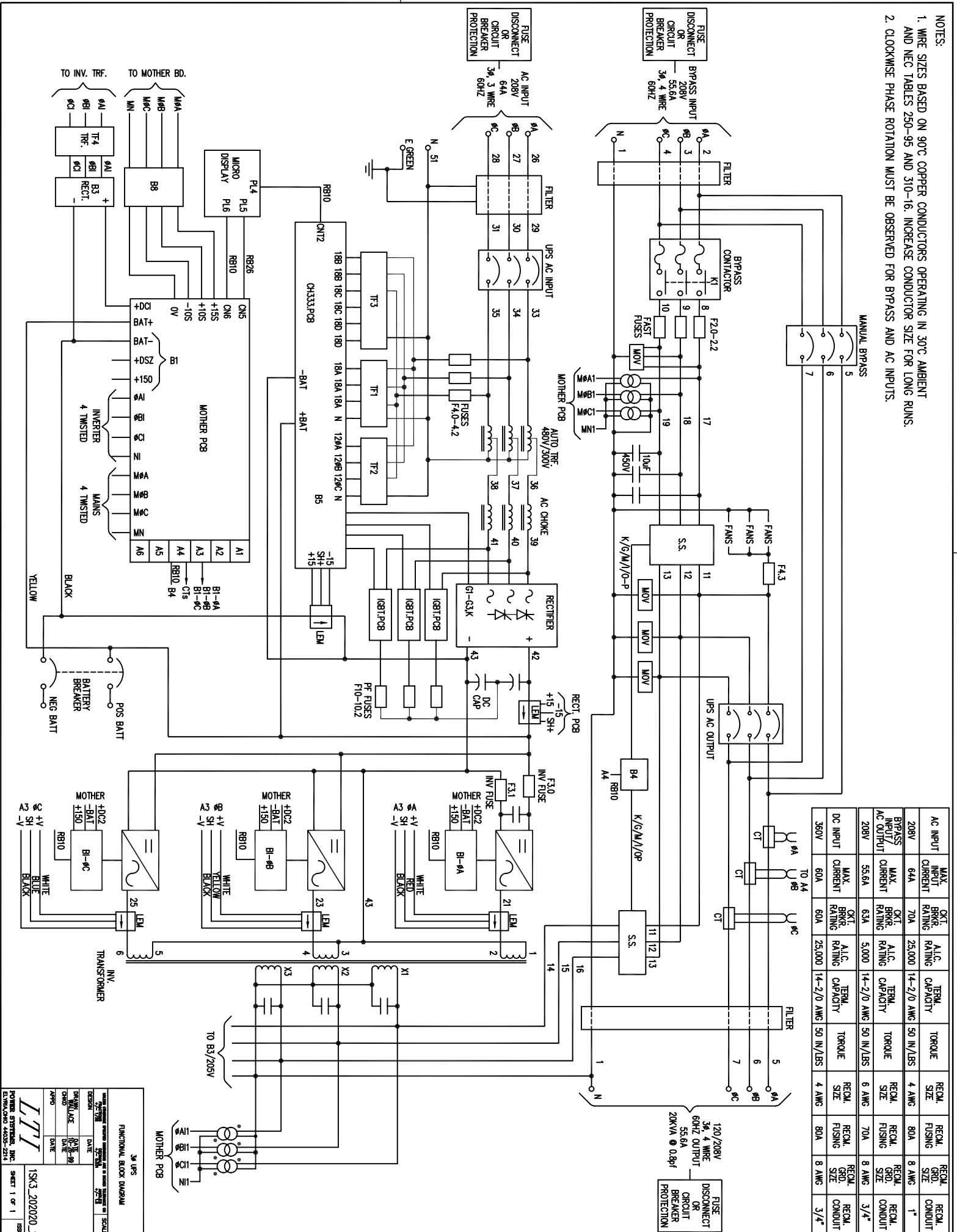
KNOCKOUT PLATE
 20KVA CONFIGURATION (208/208V)
 3/4" 1" 3/4" 3/4"
 CONDUIT CONDUIT CONDUIT CONDUIT
 (BATTERY) (AC) (BYPASS) (OUTPUT)

KNOCKOUT PLATE
 20KVA CONFIGURATION (480/208V)
 3/4" 1/2" 3/4" 3/4"
 CONDUIT CONDUIT CONDUIT CONDUIT
 (BATTERY) (AC) (BYPASS) (OUTPUT)

KNOCKOUT PLATE
 20KVA CONFIGURATION (480/480V)
 3/4" 1/2" 3/4" 3/4"
 CONDUIT CONDUIT CONDUIT CONDUIT
 (BATTERY) (AC) (BYPASS) (OUTPUT)



- NOTES:
1. WIRE SIZES BASED ON 90°C COPPER CONDUCTORS OPERATING IN 30°C AMBIENT AND NEC TABLES 250-95 AND 310-16. INCREASE CONDUCTOR SIZE FOR LONG RUNS.
 2. CLOCKWISE PHASE ROTATION MUST BE OBSERVED FOR BYPASS AND AC INPUTS.



AC INPUT	MAX INPUT CURRENT	CT BRKR RATING	A.L.C. RATING	TERM. CAPACITY	TORQUE	RECM. SIZE	RECM. FLISING	RECM. CONDUIT
208V	64A	70A	25,000	14-2/0 AWG	50 IN/LBS	4 AWG	80A	8 AWG
BYPASS INPUT/AC OUTPUT	MAX CURRENT	CT BRKR RATING	A.L.C. RATING	TERM. CAPACITY	TORQUE	RECM. SIZE	RECM. FLISING	RECM. CONDUIT
208V	55.6A	63A	5,000	14-2/0 AWG	50 IN/LBS	6 AWG	70A	8 AWG
DC INPUT	MAX CURRENT	CT BRKR RATING	A.L.C. RATING	TERM. CAPACITY	TORQUE	RECM. SIZE	RECM. FLISING	RECM. CONDUIT
360V	60A	60A	25,000	14-2/0 AWG	50 IN/LBS	4 AWG	80A	8 AWG
								3/4"

3A UPS

FUNCTIONAL BLOCK DIAGRAM

DATE: 05/20/20

DESIGN: []

DRW: []

CHKD: []

APPD: []

POWER SYSTEMS, INC.

EXTENSION 4525-2514

ISSUE

15K3_202020_2

SHEET 1 OF 1