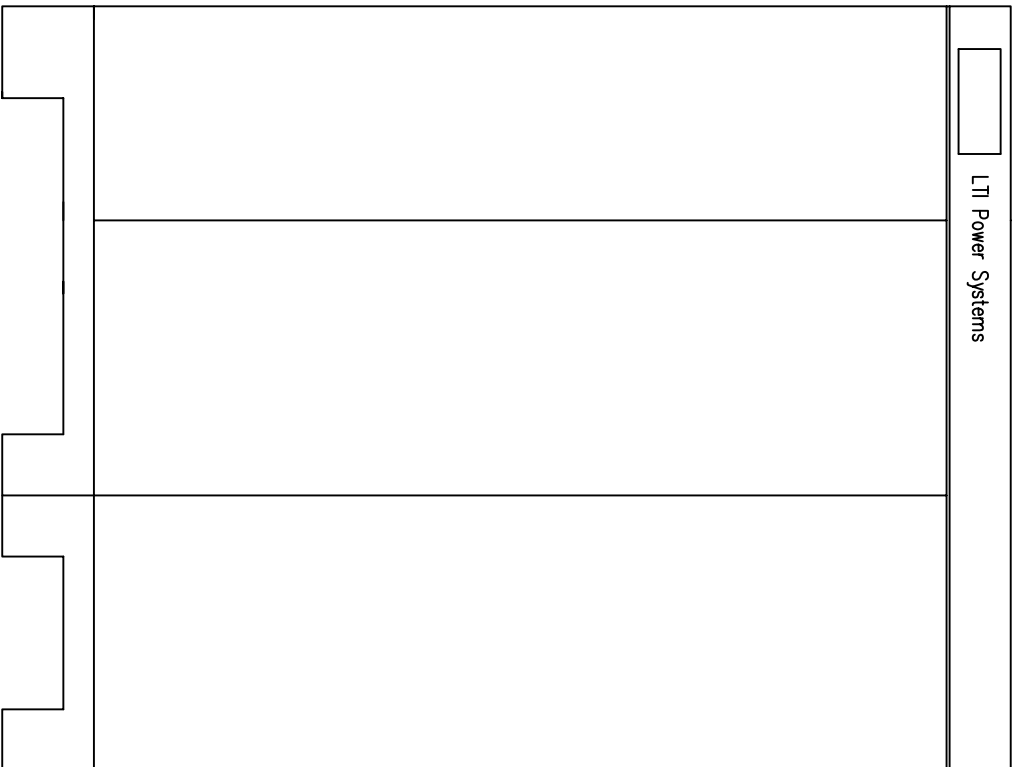
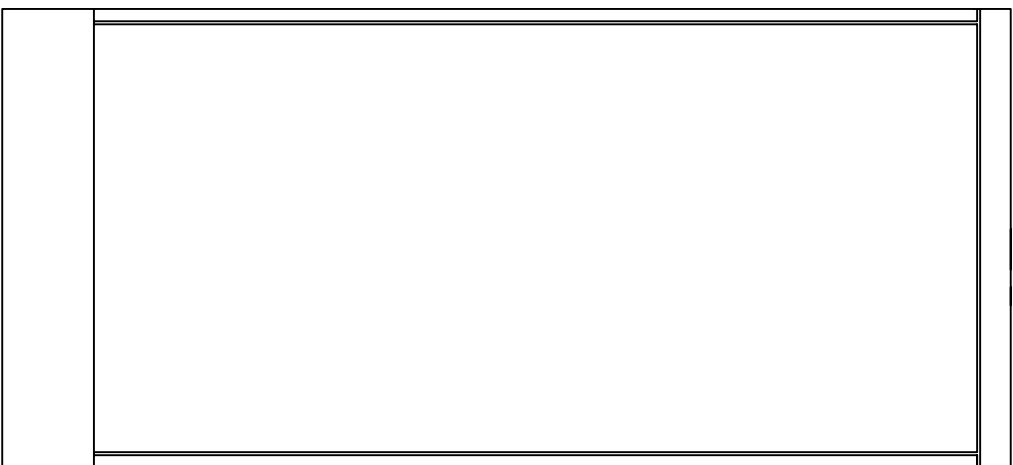


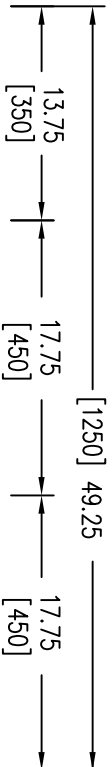
LEFT



FRONT



RIGHT



- NOTES:
1. UNLESS OTHERWISE SPECIFIED, ALL DIMENSIONS ARE IN INCHES. DIMENSIONS WITHIN BRACKETS [] ARE IN MILLIMETERS.
 2. RECOMMENDED CLEARANCE FOR SERVICEABILITY IS 36" [914] ON THE LEFT SIDE, 18" [457.2] ON THE RIGHT SIDE AND 18" [457.2] AT THE BACK OF THE SYSTEM.

LTI Power Systems, Inc.
 TEL. (440) 327-5050
 10800 MIDDLE AVE. BLDG. B ELYRIA, OHIO

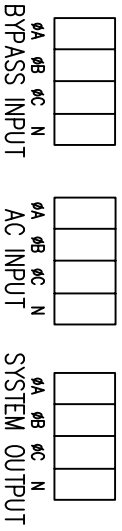
PROUPS B1250 ENCLOSURE
 60KVA
 WEIGHT: 2,100 LBS. (953.4 kg)

SHEET 1 OF 1

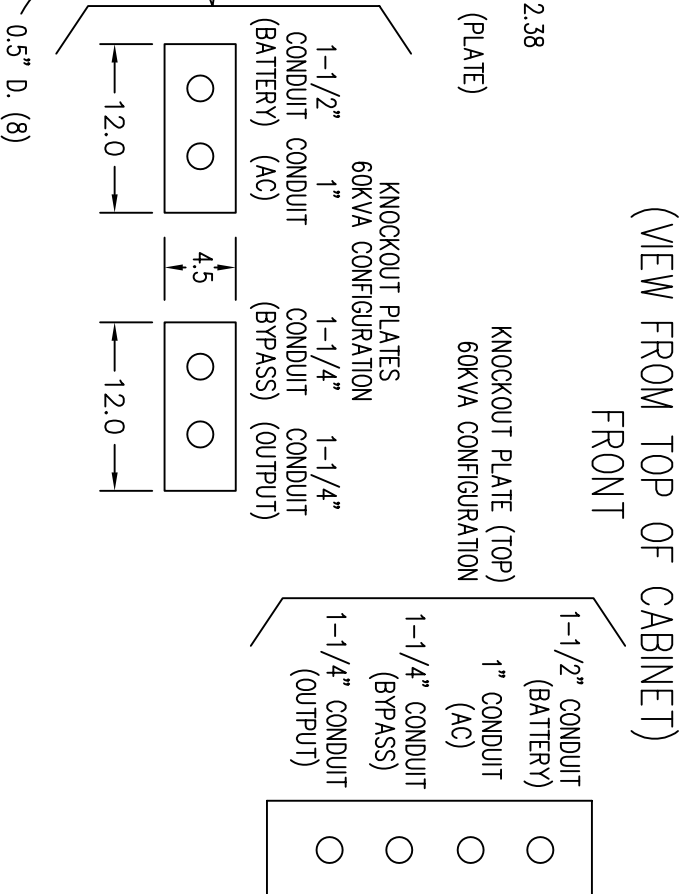
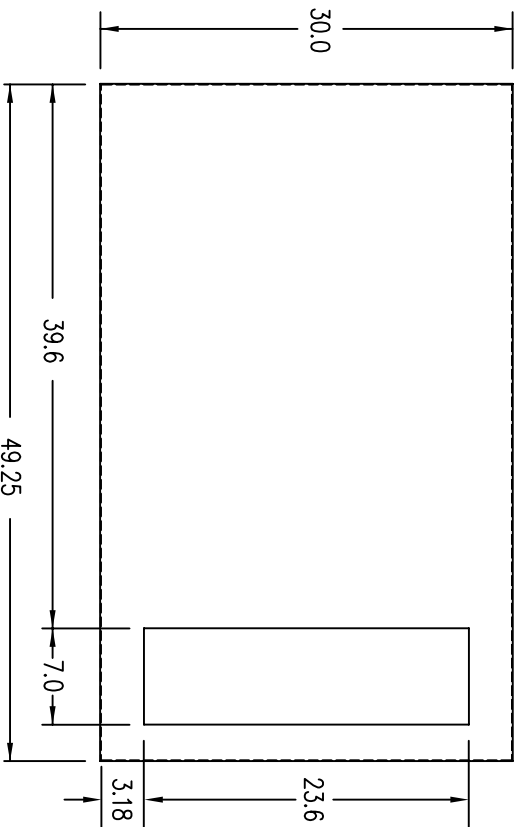
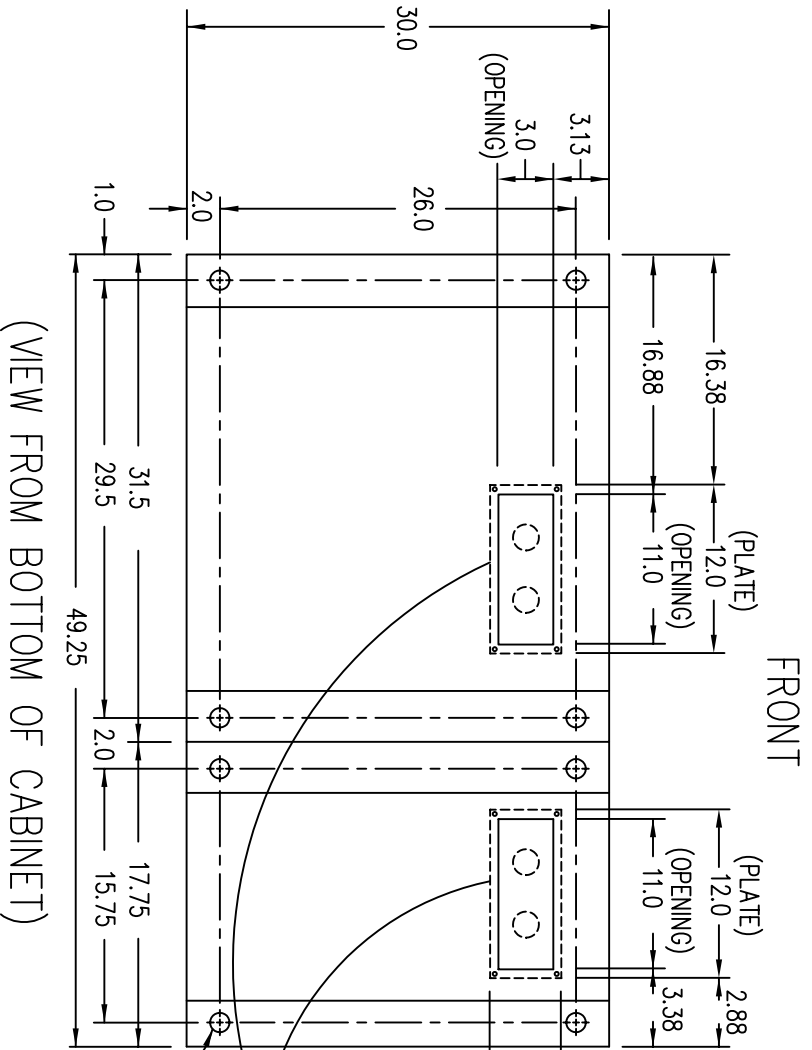
LTI - PROUPS
 CAD DWG NAME: B1250CAB_60

REV.

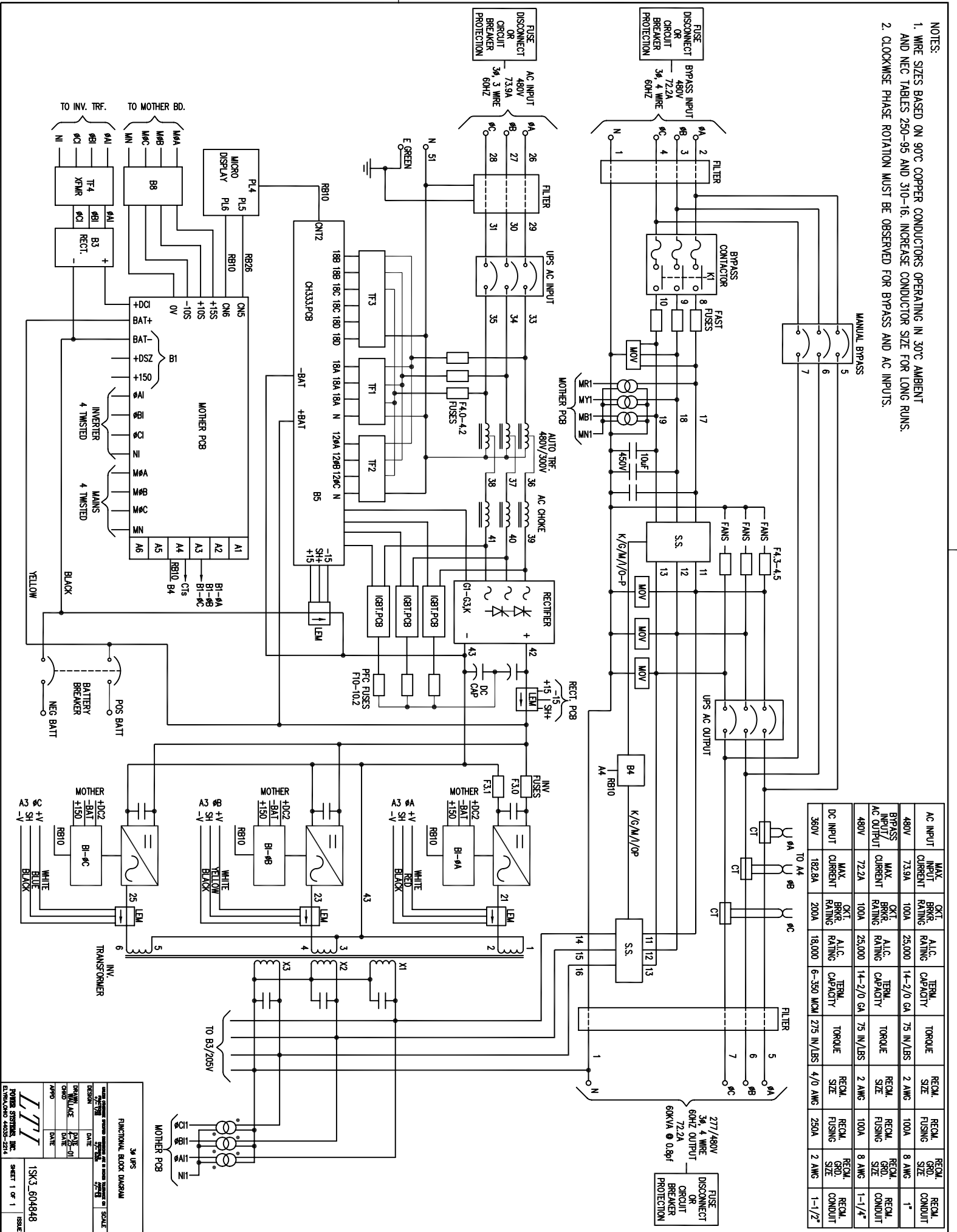
TERMINATION CONFIGURATION (BOTTOM, FRONT)
 TERMINAL BLOCK CAPACITY: (2/0 TO 14 GA.)



NOTE: ALL DIMENSIONS ARE IN INCHES UNLESS OTHERWISE SPECIFIED.
 WHEN USING TOP CABLE ENTRY, ROUTE WIRES DOWN ALONG RIGHT SIDE OF CABINET
 TO BOTTOM, FRONT TERMINAL BLOCK LOCATION.



- NOTES:
 1. WIRE SIZES BASED ON 90°C COPPER CONDUCTORS OPERATING IN 30°C AMBIENT AND NEC TABLES 250-95 AND 310-16. INCREASE CONDUCTOR SIZE FOR LONG RUNS.
 2. CLOCKWISE PHASE ROTATION MUST BE OBSERVED FOR BYPASS AND AC INPUTS.



| AC INPUT | MAX INPUT CURRENT | CT BRKR RATING | A.I.C. RATING | TERM. CAPACITY | TORQUE | RECM. SIZE | RECM. FUSING | RECM. GND. SIZE | RECM. CONDUIT |
|------------------------|--------------------|----------------|---------------|----------------|--|------------|--------------|-----------------|---------------|
| 480V | 73.9A | 100A | 25,000 | 14-2/0 GA | 75 IN/LBS | 2 AWG | 100A | 8 AWG | 1" |
| BYPASS INPUT/AC OUTPUT | MAX CURRENT RATING | CT BRKR RATING | A.I.C. RATING | TERM. CAPACITY | TORQUE <td>RECM. SIZE</td> <td>RECM. FUSING</td> <td>RECM. GND. SIZE</td> <td>RECM. CONDUIT</td> | RECM. SIZE | RECM. FUSING | RECM. GND. SIZE | RECM. CONDUIT |
| 480V | 72.2A | 100A | 25,000 | 14-2/0 GA | 75 IN/LBS | 2 AWG | 100A | 8 AWG | 1-1/4" |
| DC INPUT | MAX CURRENT | CT BRKR RATING | A.I.C. RATING | TERM. CAPACITY | TORQUE <td>RECM. SIZE</td> <td>RECM. FUSING</td> <td>RECM. GND. SIZE</td> <td>RECM. CONDUIT</td> | RECM. SIZE | RECM. FUSING | RECM. GND. SIZE | RECM. CONDUIT |
| 360V | 182.8A | 200A | 18,000 | 6-3/0 MCM | 275 IN/LBS | 4/0 AWG | 250A | 2 AWG | 1-1/2" |

3A UPS
 FUNCTIONAL BLOCK DIAGRAM
 DESIGN: [] DATE: []
 DRAWN BY: [] DATE: []
 CHECKED BY: [] DATE: []
 APPROVED BY: [] DATE: []
 POWER SYSTEMS, INC.
 15K3.504848
 SHEET 1 OF 1