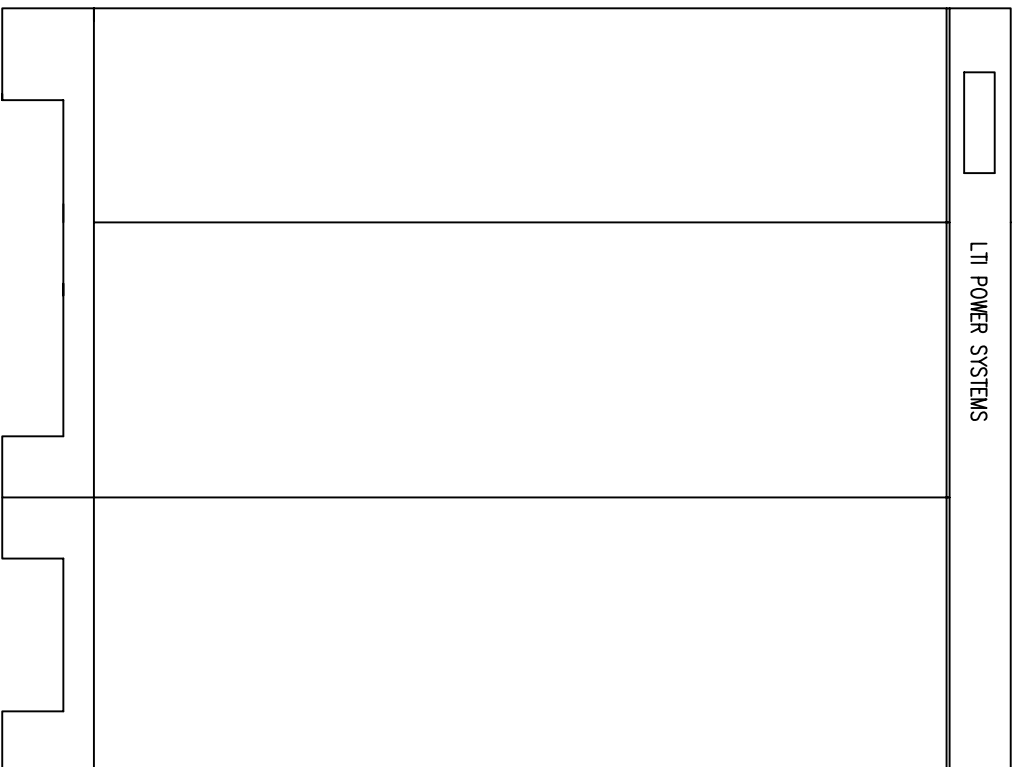


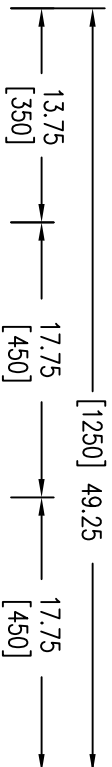
LEFT



FRONT



RIGHT



[1650] 65.0

NOTES:

1. UNLESS OTHERWISE SPECIFIED, ALL DIMENSIONS ARE IN INCHES. DIMENSIONS WITHIN BRACKETS [] ARE IN MILLIMETERS.
2. RECOMMENDED CLEARANCE FOR SERVICEABILITY IS 36" [914] ON THE LEFT SIDE, 30" [762] ON THE RIGHT SIDE AND 18" [457] AT THE BACK OF THE SYSTEM.

LTI Power Systems, Inc.

TEL. (440) 327-5050

10800 MIDDLE AVE. BLDG. B ELYRIA, OHIO

PROUPS B1250 ENCLOSURE

80KVA

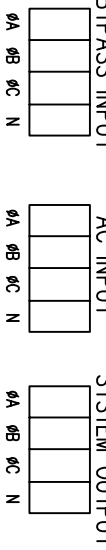
WEIGHT: 2,150 LBS. (976.1 kg)

LTI - PROUPS

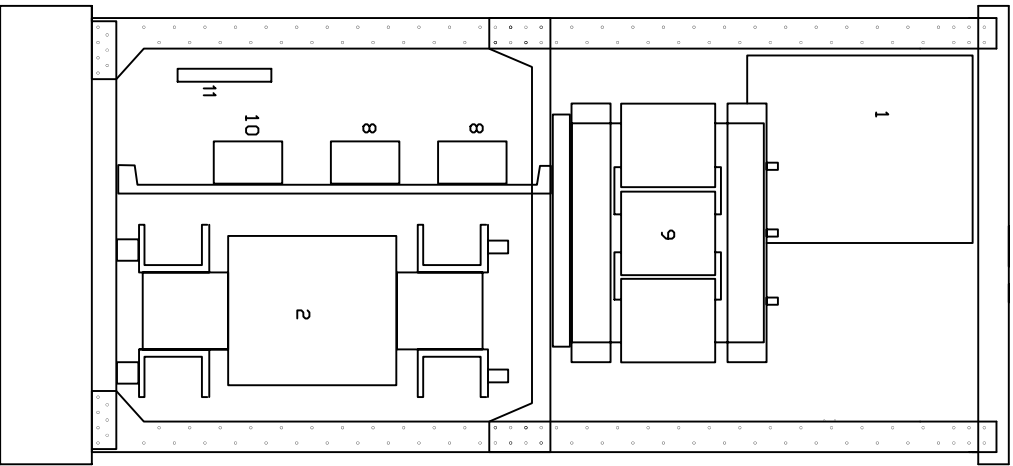
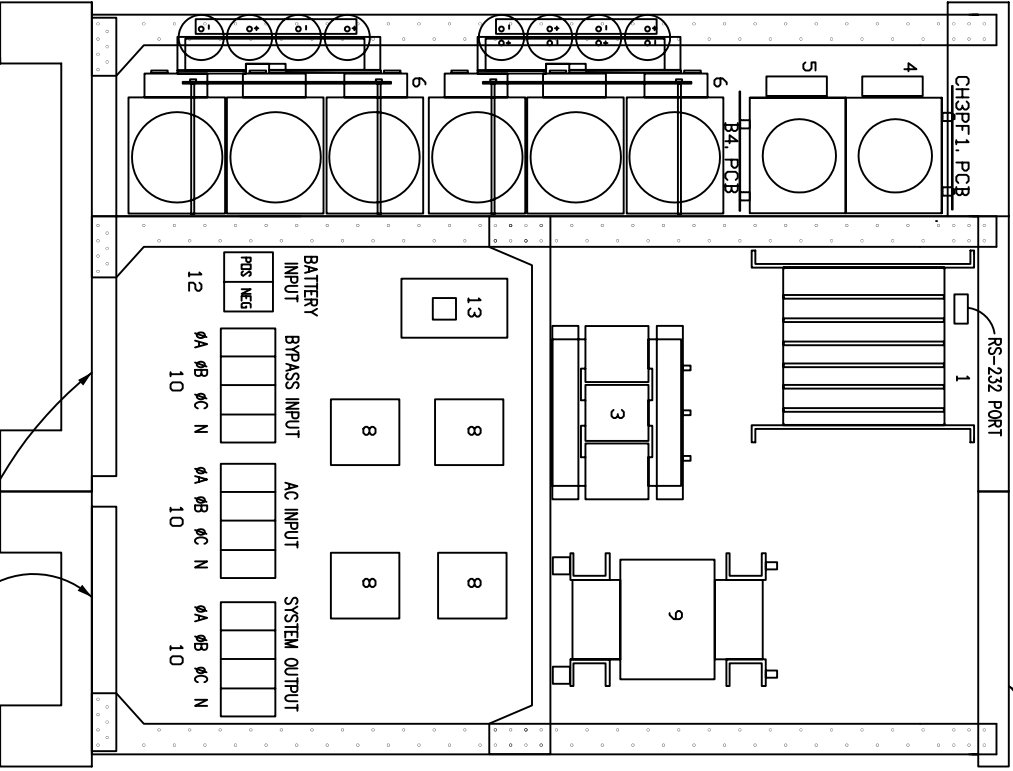
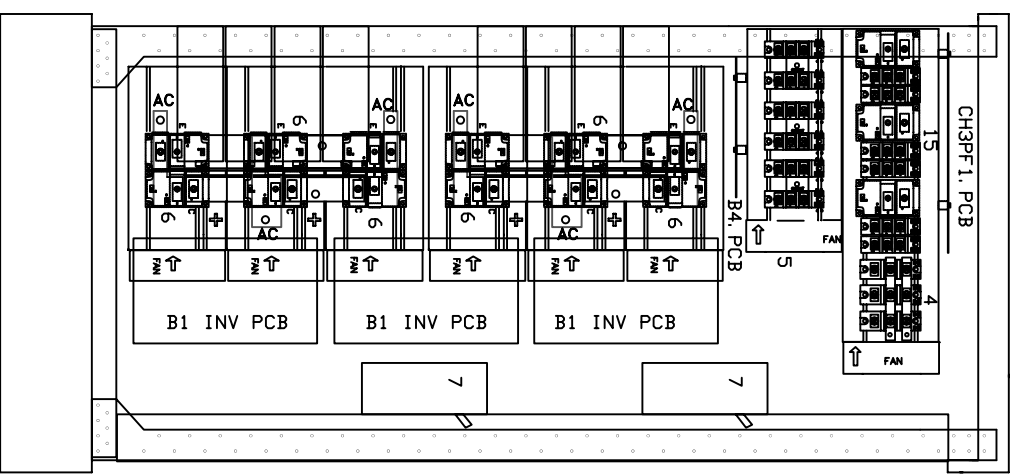
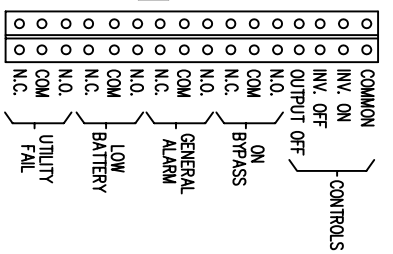
REV.

- 1 - ELECTRONICS RACK
- 2 - INVERTER TRANSFORMER
- 3 - AC CHOKE
- 4 - RECTIFIER POWER PACK
- 5 - STAT. SWITCH POWER PACK
- 6 - INVERTER POWER PACK
- 7 - CIRCUIT BREAKERS
- 8 - RFI FILTERS
- 9 - CHARGER AUTO TRANSFORMER
- 10 - INPUT/OUTPUT TERMINALS
- 11 - RELAY INTERFACE TERMINALS
- 12 - BATTERY INPUT TERMINALS
- 13 - BATTERY CIRCUIT BREAKER

TERMINATION CONFIGURATION (BOTTOM, FRONT)
 TERMINAL BLOCK CAPACITY: 350 MCM TO 6 AWG.
 TORQUE: 275 IN. LBS.



RELAY INTERFACE TERMINATIONS
 TERMINAL CAPACITY: 14 TO 20 AWG.
 RELAYS RATED 1A @24VDC, 0.5A @ 120VAC RESISTIVE



LEFT

FRONT

RIGHT

CONDUIT ENTRY THRU GLAND PLATES

CONDUIT ENTRY THRU TOP GLAND PLATE

LTI Power Systems, Inc.

80KVA ASSEMBLY

LTI-PROUPS

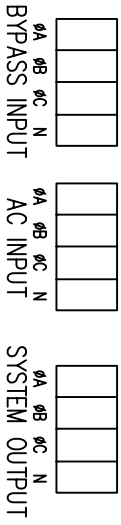
TEL. (440) 327-5050

10800 Middle Ave. Bldg. B Elyria, Ohio 44035

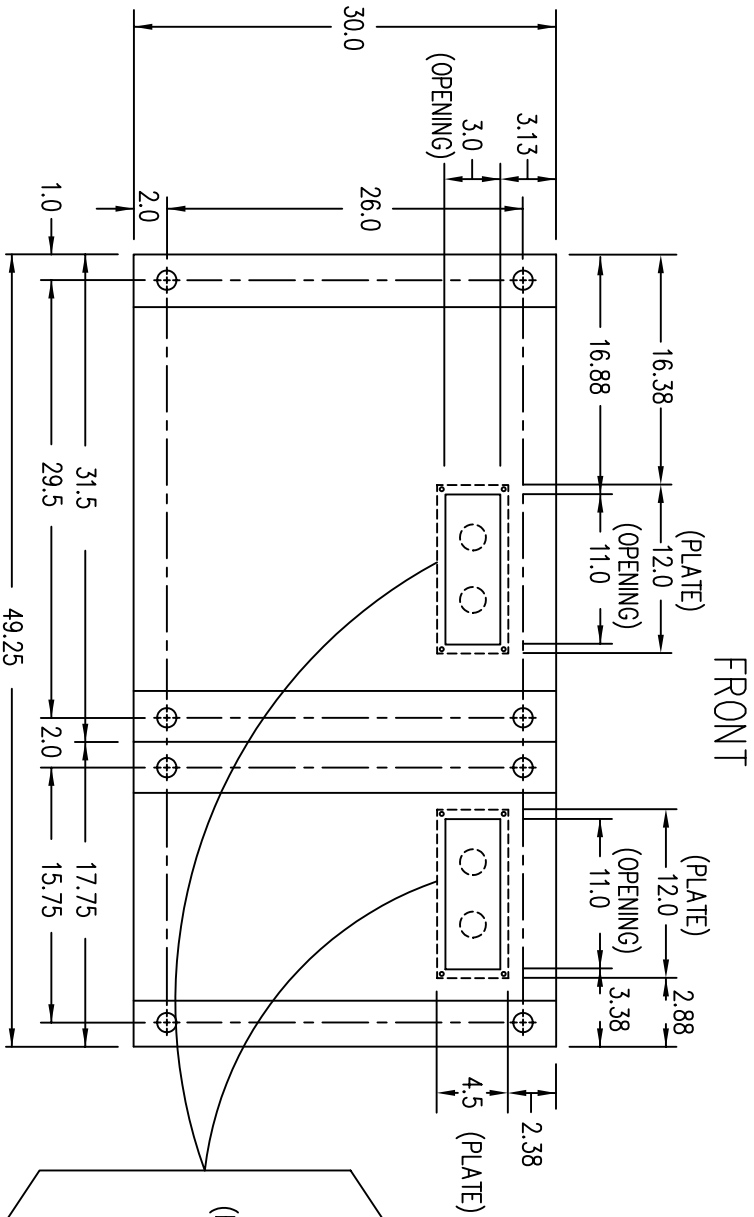
CAD DWG NAME: 80K333-FORMC

REV. 1

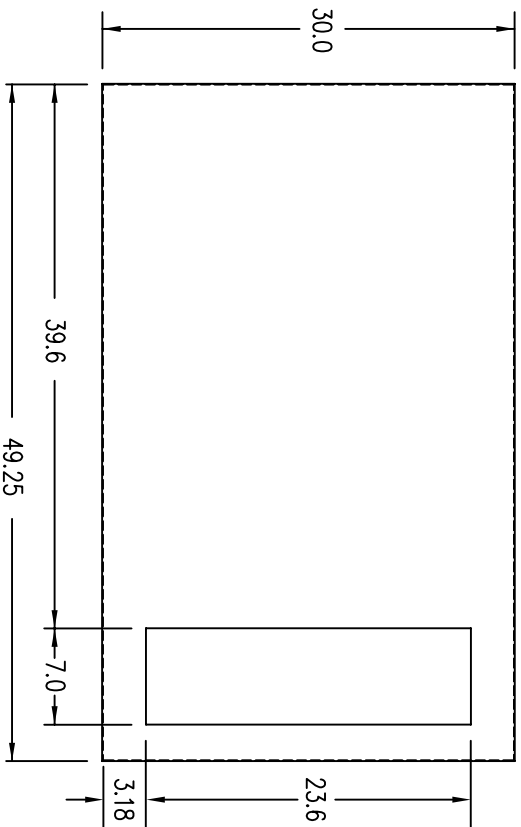
TERMINATION CONFIGURATION (BOTTOM, FRONT)
 TERMINAL BLOCK CAPACITY: 350 MCM TO 6 GA.



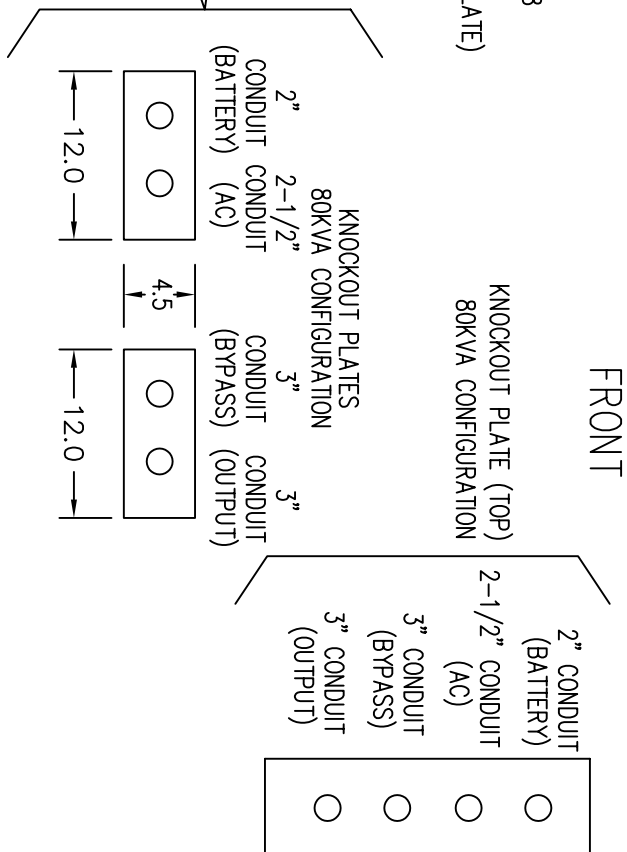
NOTE: ALL DIMENSIONS ARE IN INCHES UNLESS OTHERWISE SPECIFIED.
 WHEN USING TOP CABLE ENTRY, ROUTE WIRES DOWN ALONG RIGHT SIDE OF CABINET
 TO BOTTOM, FRONT TERMINAL BLOCK LOCATION.



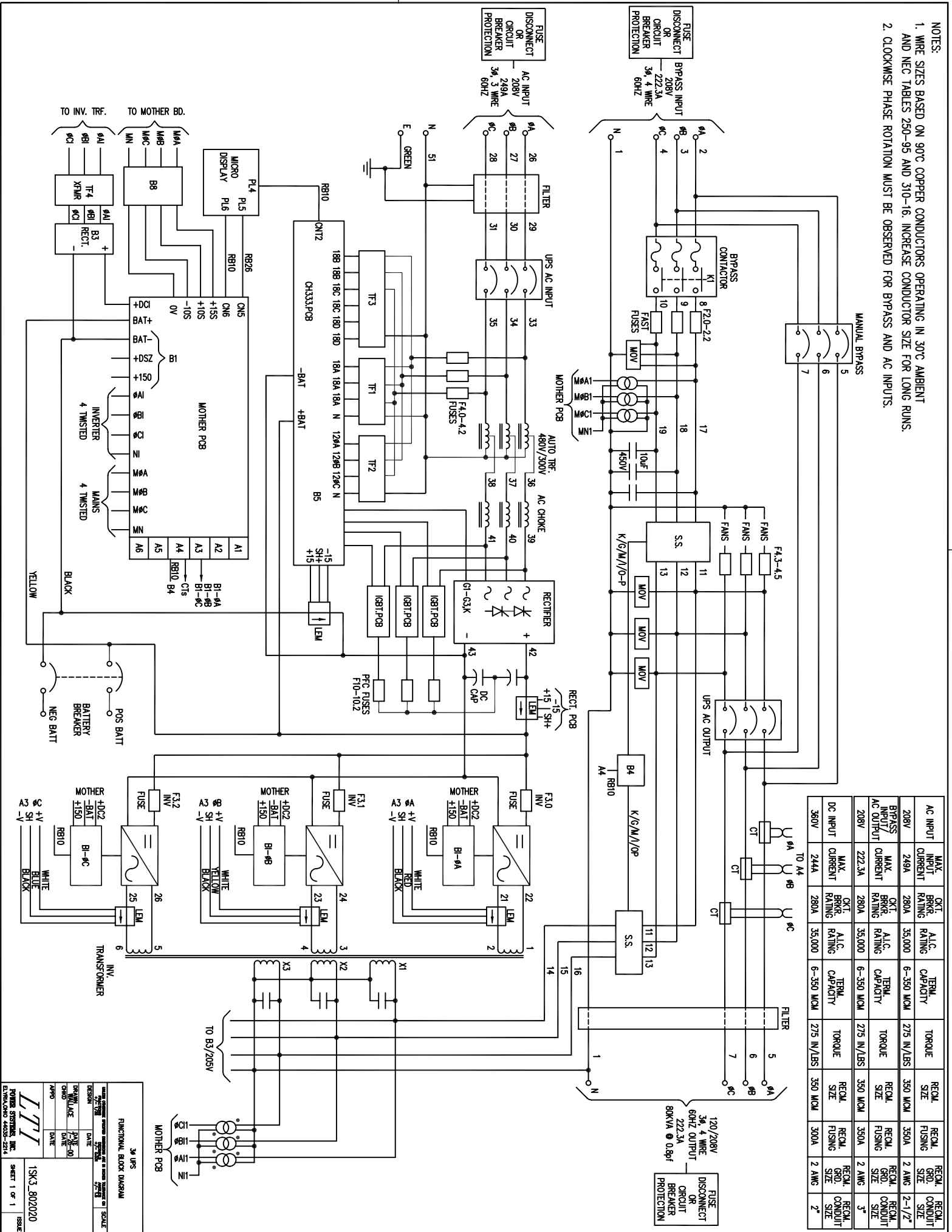
(VIEW FROM BOTTOM OF CABINET)



(VIEW FROM TOP OF CABINET)



- NOTES:
 1. WIRE SIZES BASED ON 90°C COPPER CONDUCTORS OPERATING IN 30°C AMBIENT AND NEC TABLES 250-95 AND 310-16. INCREASE CONDUCTOR SIZE FOR LONG RUNS.
 2. CLOCKWISE PHASE ROTATION MUST BE OBSERVED FOR BYPASS AND AC INPUTS.



AC INPUT	MAX. INPUT CURRENT	RCT. RATING	A.L.C. RATING	TERM. CAPACITY	TORQUE	RECM. SIZE	RECM. FUSING	RECM. CONDUIT SIZE
208V	249A	280A	35,000	6-350 MCM	275 N/LBS	350 MCM	350A	2 ANG
BYPASS INPUT/AC OUTPUT	MAX. CURRENT RATING	RCT. RATING	A.L.C. RATING	TERM. CAPACITY	TORQUE	RECM. FUSING	RECM. CONDUIT SIZE	RECM. CONDUIT SIZE
208V	222.3A	280A	35,000	6-350 MCM	275 N/LBS	350 MCM	350A	2 ANG
DC INPUT	MAX. CURRENT RATING	RCT. RATING	A.L.C. RATING	TERM. CAPACITY	TORQUE	RECM. FUSING	RECM. CONDUIT SIZE	RECM. CONDUIT SIZE
360V	244A	280A	35,000	6-350 MCM	275 N/LBS	350 MCM	300A	2 ANG

3A UPS
 FUNCTIONAL BLOCK DIAGRAM
 DESIGN: [] DATE: []
 DRAWN BY: [] DATE: []
 CHECKED BY: [] DATE: []
 APPROVED BY: [] DATE: []
 15K3.802020
 SHEET 1 OF 1
 ISSUE