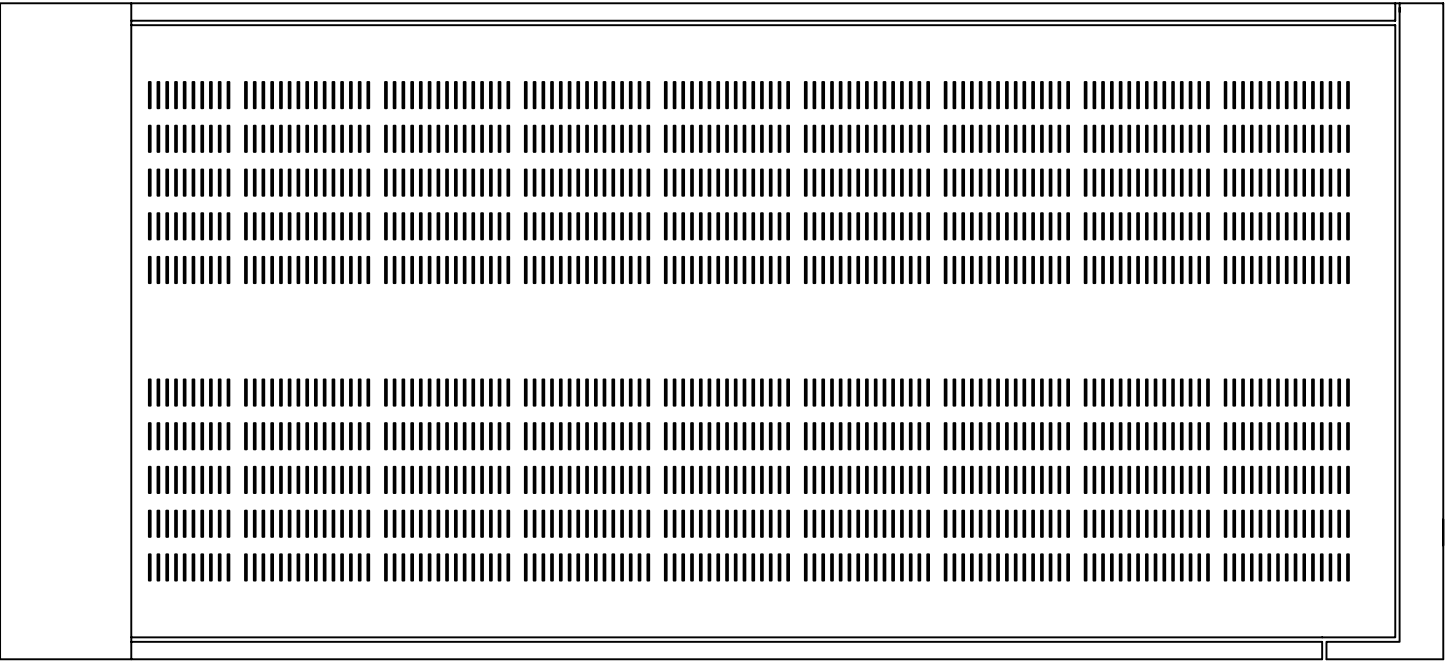
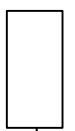
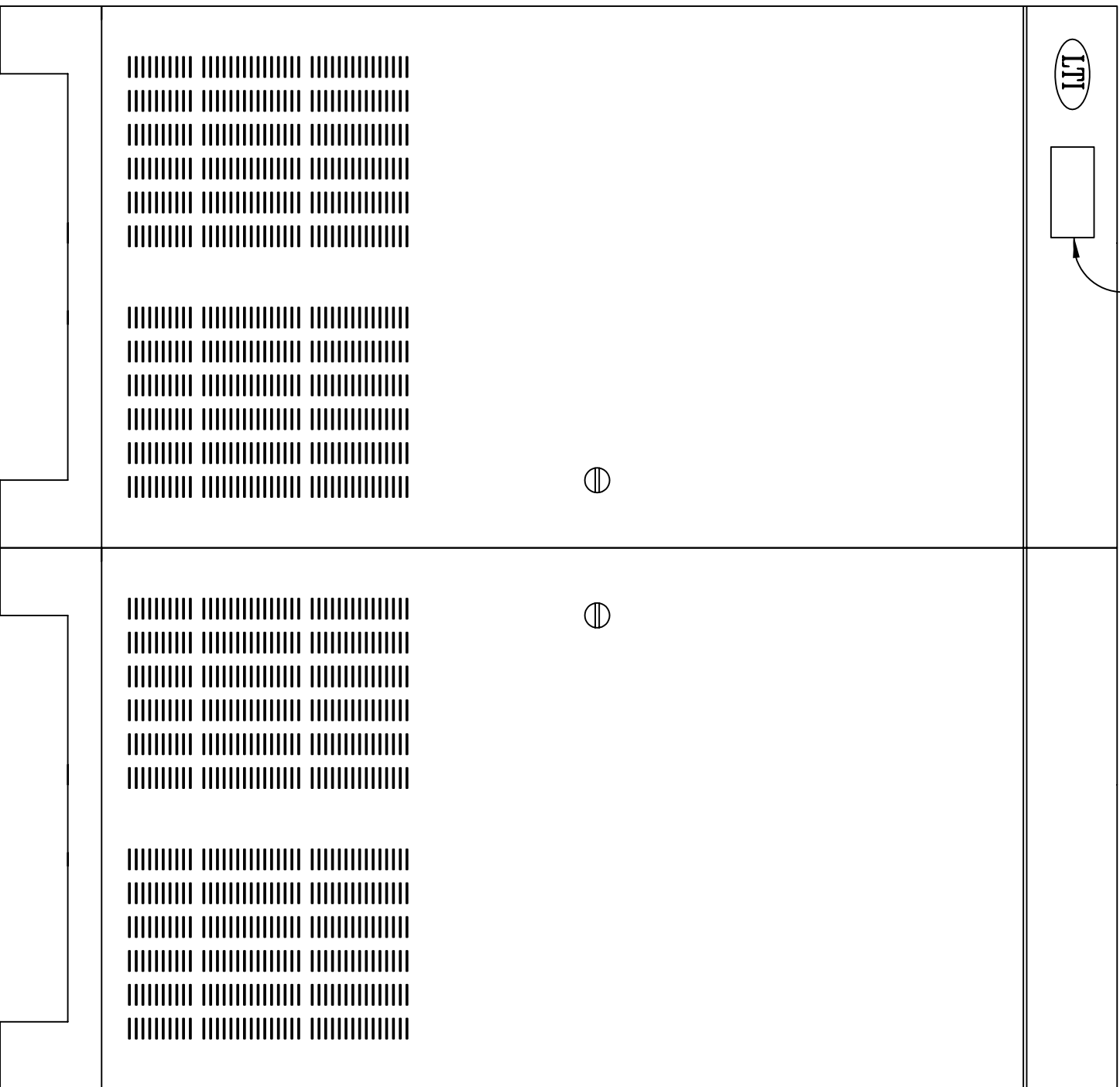


63.0 [1600]
 31.5 [800]
 STANDARD DISPLAY

[762]
 30.0



LEFT



FRONT



RIGHT

65.0
 [1650]

Notes: Unless otherwise specified, dimensions are in inches. Dimensions within brackets [] are in millimeters.
 Recommended clearance for serviceability is 36" [914] in the front and 6" [152] on the remaining sides.

LTI Power Systems, Inc.

TEL. (440) 327-5050
 10800 Middle Ave. Elyria, Ohio 44035

ProUPS B1600 ENCLOSURE
 80KVA
 80KVA WEIGHT W/SKID: 3200 LBS. (1440 kg)

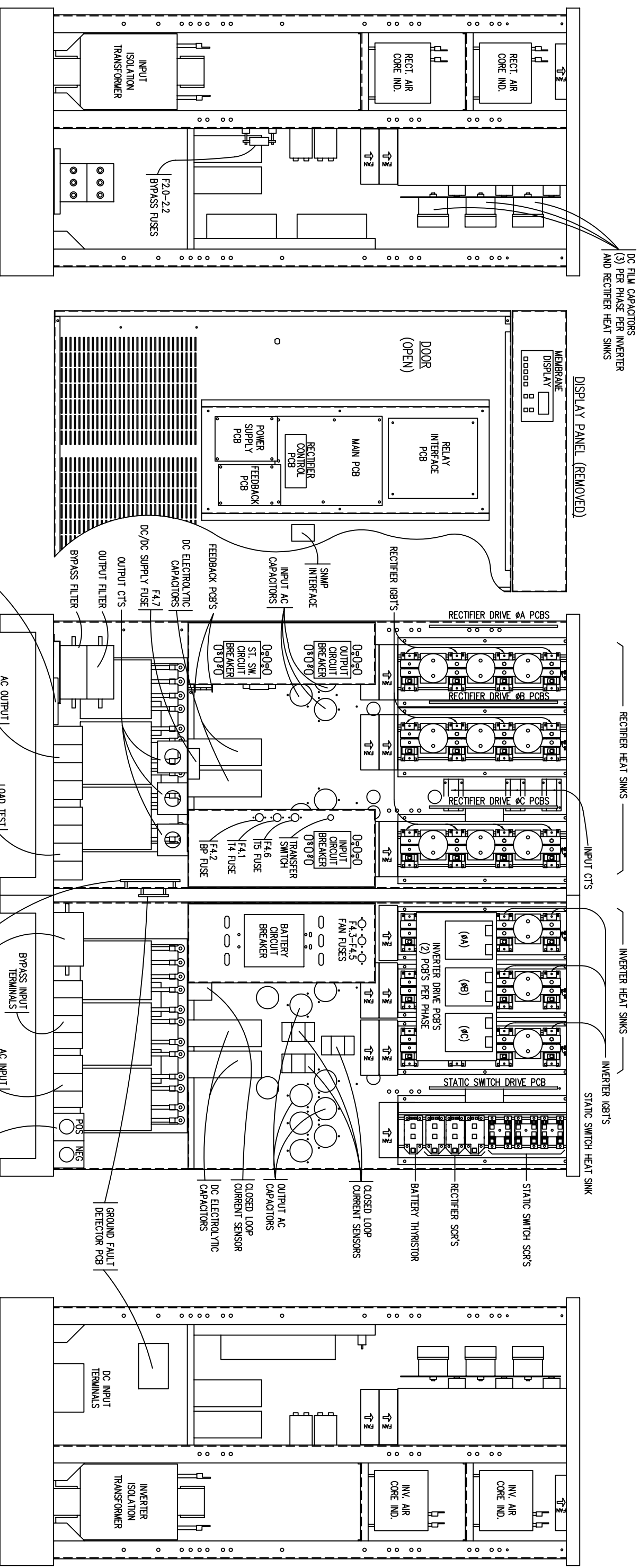
LTI-ProUPS

CAD DWG NAME: B1600CAB_804848F

REV.
 1

ISS. NO.	CHG. BY	DATE	DESCRIPTION

REVISIONS

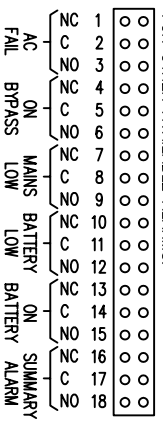


LEFT SIDE

FRONT

RIGHT SIDE

FORM C CONTACTS RATED 1 AMP @ 120VAC.
ALARMS SHOWN ARE STANDARD. REFER TO MANUAL
FOR OTHER AVAILABLE ALARMS.



COMPONENT LOCATION DRAWING

FOR 80KVA, 480V INPUT, 277/480V OUTPUT 360VDC SYSTEM

UNLESS OTHERWISE SPECIFIED DIMENSIONS ARE IN INCHES TOLERANCE ON FRACTIONS +/- 1/32 DECIMALS +/- 0.031 ANGLES +/- 1.5°	SCALE
DESIGN DATE	
DRAWN DATE 12-12-08	
CHECK DATE	
APPD DATE	

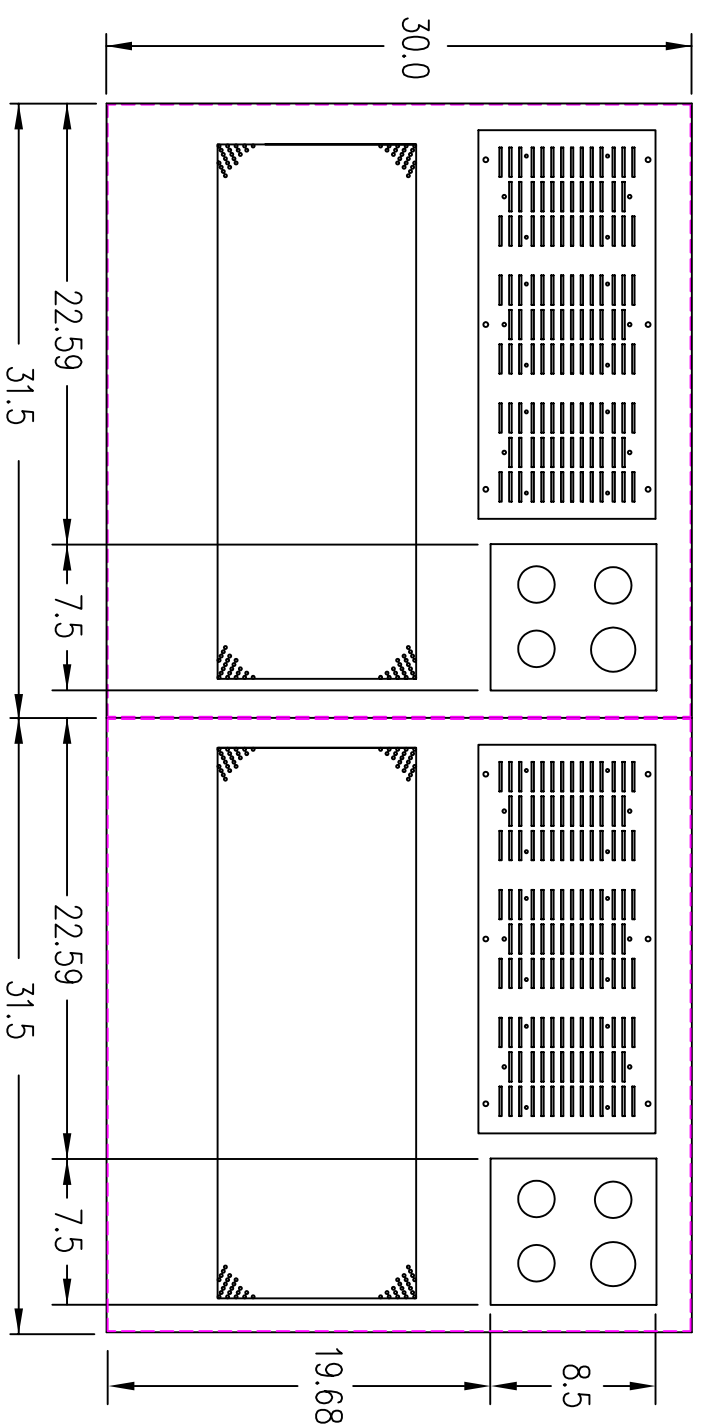
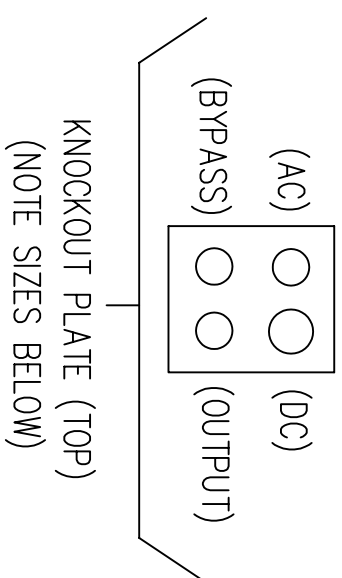
POWER SYSTEMS, INC.
ELYRIA, OHIO 44035-7822

CL804848F_208270
SHEET 1 OF 1
ISSUE 1

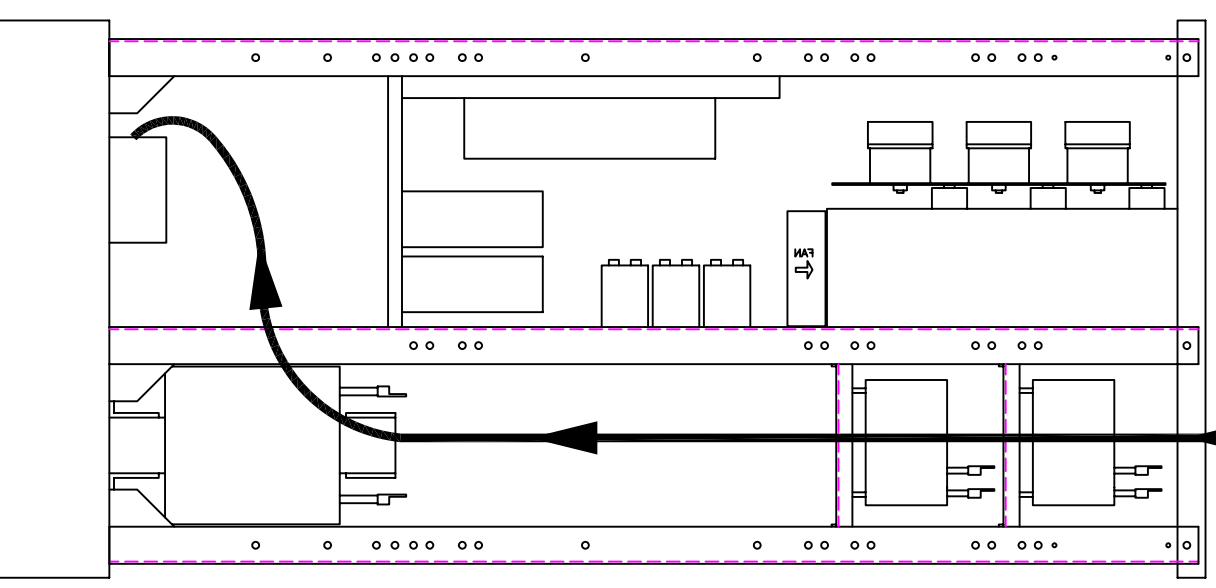
1 2 3 4 5 6 7 8 9

A B C D E F G H

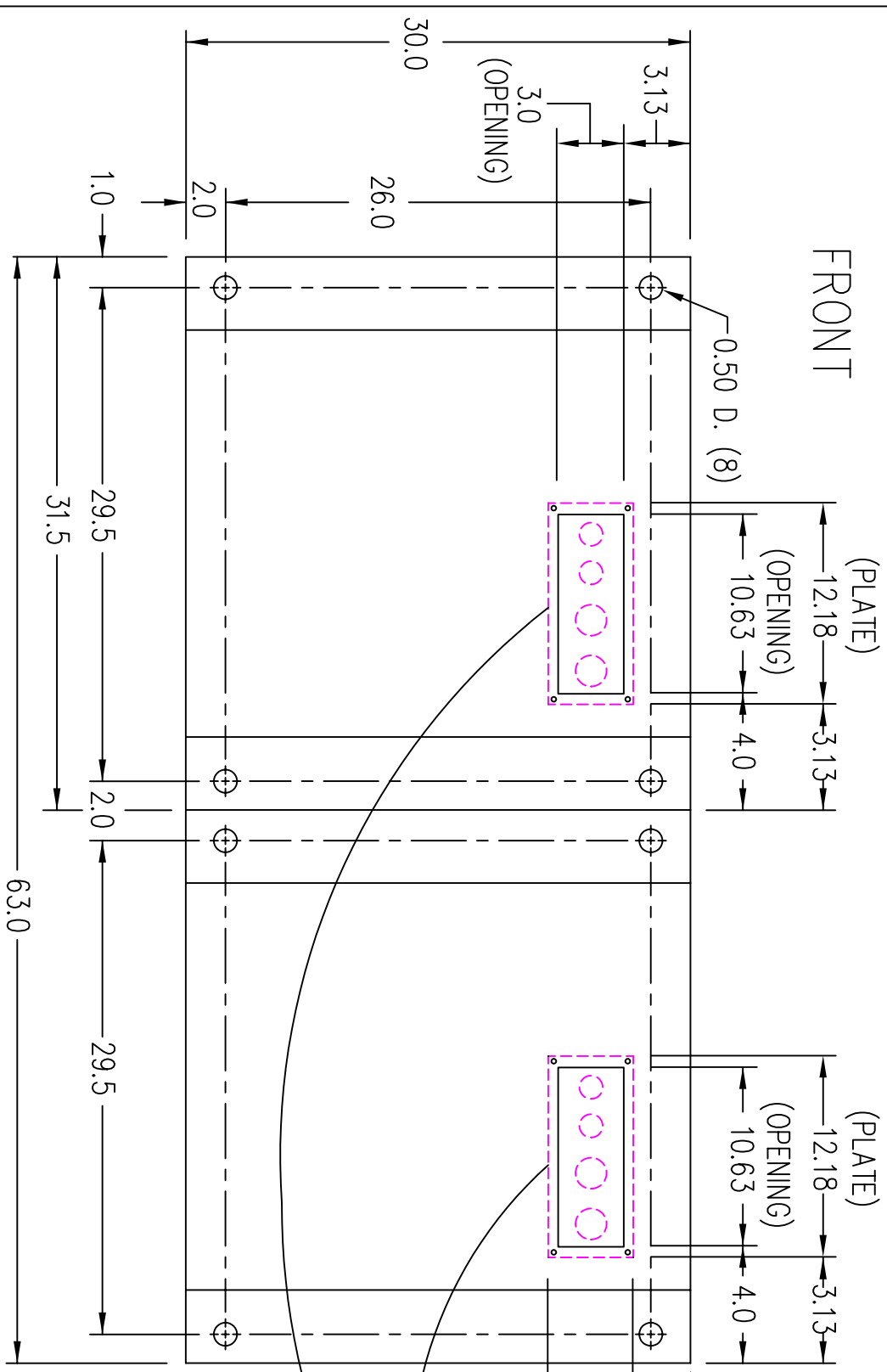
(VIEW FROM TOP OF CABINET)



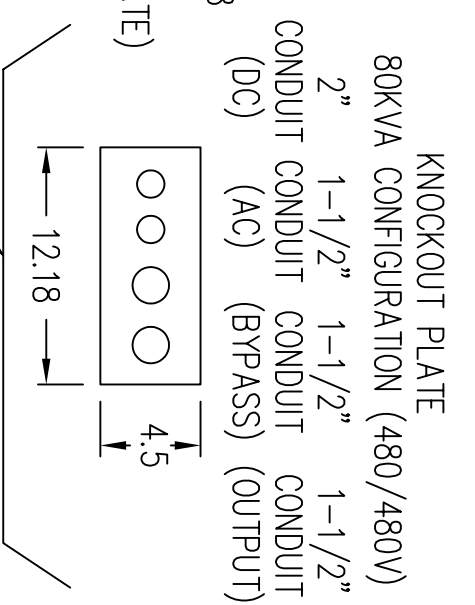
RIGHT SIDE



FRONT

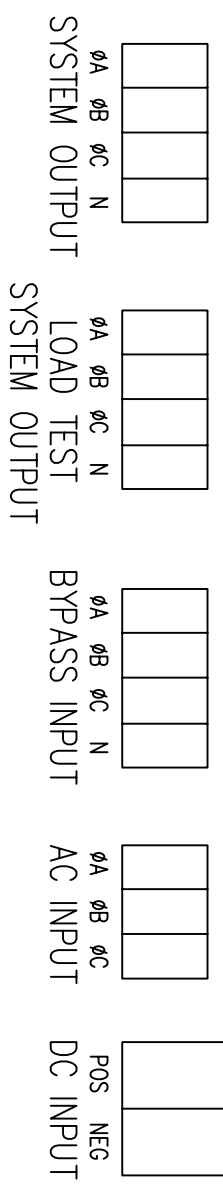


FRONT



FOR TOP CABLE ENTRY, ROUTE WIRES DOWN RIGHT SIDE THROUGH OPEN AREA OF UPRIGHT CENTER PANEL TO TERMINALS LOCATED ON BASE PANEL.

TERMINATION CONFIGURATION (BOTTOM, FRONT)
 TERMINAL BLOCK CAPACITY: 350 MCM TO 6 GA.
 TERMINAL BLOCK CAPACITY (DC INPUT): 500 MCM TO 4 GA.



NOTE: ALL DIMENSIONS ARE IN INCHES UNLESS OTHERWISE SPECIFIED.

(VIEW FROM BOTTOM OF CABINET)

LTI Power Systems, Inc.

80KVA ASSEMBLY

LTI-ProUPS

REV. 1

AC INPUT	MAX. INPUT CURRENT	CT. BRKR. RATING	A.I.C. RATING	TERM. CAPACITY	TORQUE	RECM. SIZE	RECM. FUSING	RECM. GRD. SIZE	RECM. CONDUIT
480V	138.6A	150A	25,000	6 AWG-350 MCM	275 IN/LBS	2/0 AWG	175A	4 AWG	1-1/2"
277/480V	96.3A	125A	25,000	6 AWG-350 MCM	275 IN/LBS	1/0 AWG	150A	6 AWG	1-1/2"
DC INPUT	304.7A	320A	35,000	4 AWG-500 MCM	275 IN/LBS	350 MCM	350A	2 AWG	2"

- NOTES:
1. WIRE SIZES BASED ON 90°C COPPER CONDUCTORS OPERATING IN 30°C AMBIENT AND NEC TABLES 250-95 AND 310-16. INCREASE CONDUCTOR SIZE FOR LONG RUNS.
 2. CLOCKWISE PHASE ROTATION MUST BE OBSERVED FOR BYPASS AND AC INPUTS.
 3. CLCS = CLOSED LOOP CURRENT SENSOR

