

TO REMOVE FRONT FILTER, REMOVE TOP SCREW FROM EACH SIDE BRACKET. ROTATE BRACKETS AWAY FROM FILTER, THEN SLIDE FILTER UP AND REPLACE AS NECESSARY.

Notes: Unless otherwise specified, dimensions are in inches. Dimensions within brackets [] are in millimeters.
 Recommended clearance for serviceability is 36" [914] in the front and 6" [152] on the remaining sides.

LTI Power Systems, Inc.

ProUPS B2050 ENCLOSURE
 100KVA

100KVA WEIGHT W/SKID: 4100 LBS. (1845 kg)

LTI-ProUPS

TEL. (440) 327-5050

10800 Middle Ave. Elyria, Ohio 44035

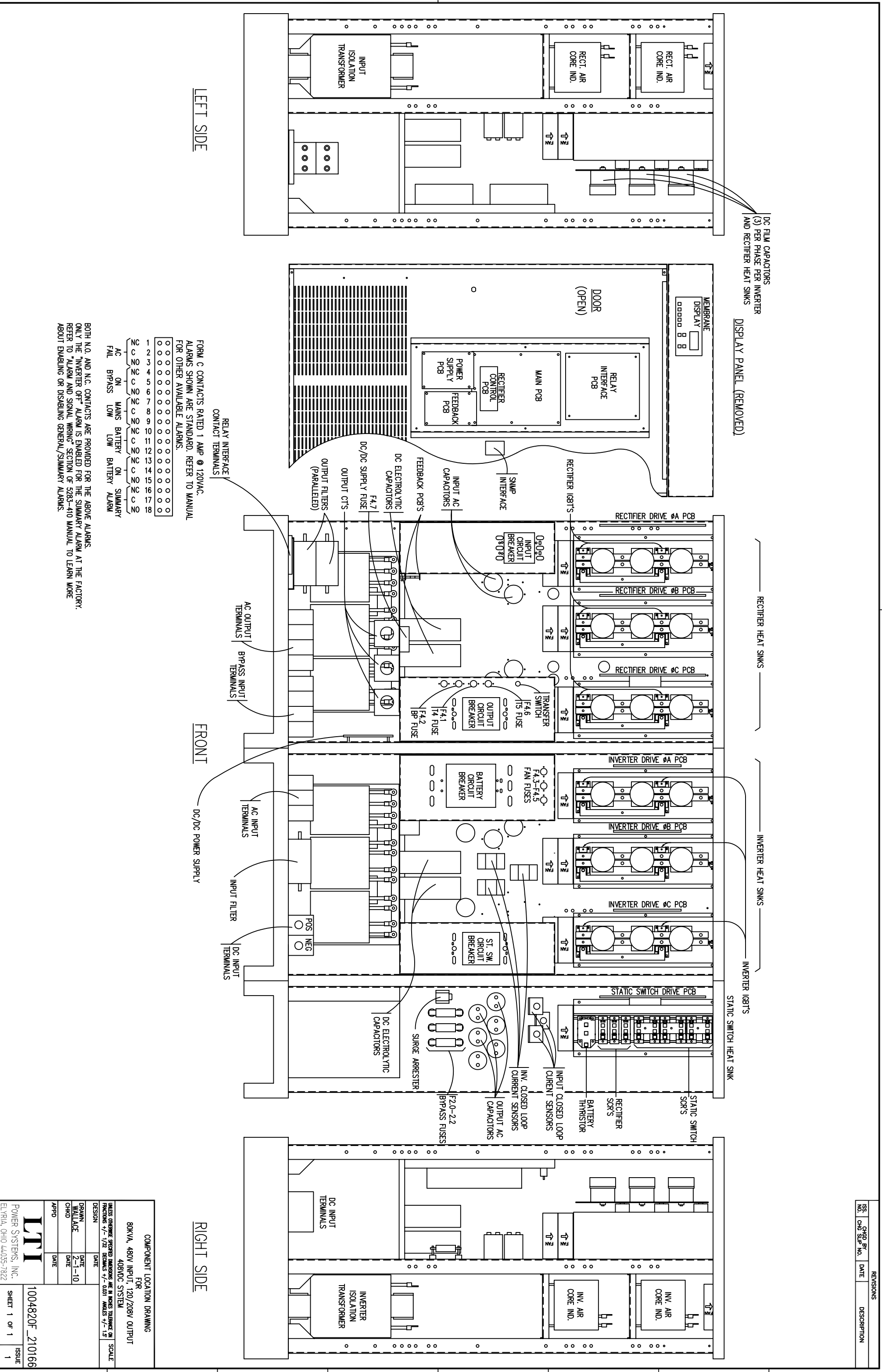
CAD DWG NAME: B2050CAB_100KVA_FILTER

REV.

1

| ISS | | CHG | | REV | | DESCRIPTION | |
|-----|----|-----|------|-----|------|-------------|-------------|
| NO. | BY | NO. | DATE | NO. | DATE | NO. | DESCRIPTION |
| | | | | | | | |

REVISIONS



LEFT SIDE

FRONT

RIGHT SIDE

FORM C CONTACTS RATED 1 AMP @ 120VAC.
ALARMS SHOWN ARE STANDARD. REFER TO MANUAL
FOR OTHER AVAILABLE ALARMS.

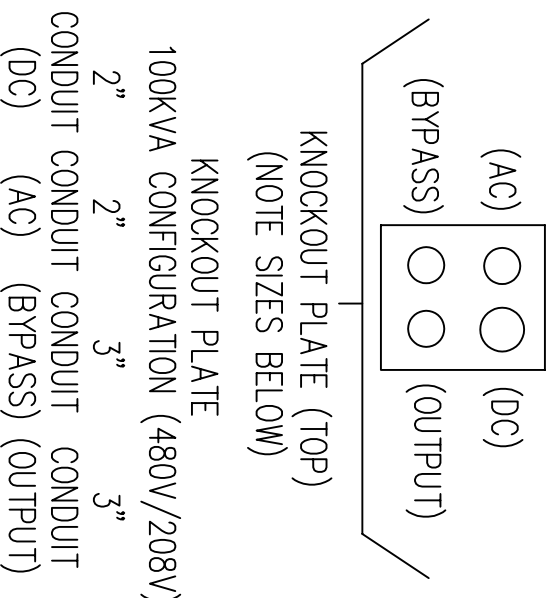
| | | | | | | | | | | | | | | | | | | | | | | | | | | | | | |
|---|---|---|---|---|---|---|---|---|----|----|----|----|----|----|----|----|----|----|----|----|----|----|----|----|----|----|----|----|---|
| 1 | 2 | 3 | 4 | 5 | 6 | 7 | 8 | 9 | 10 | 11 | 12 | 13 | 14 | 15 | 16 | 17 | 18 | 19 | 20 | 21 | 22 | 23 | 24 | 25 | 26 | 27 | 28 | 29 | |
| ○ | ○ | ○ | ○ | ○ | ○ | ○ | ○ | ○ | ○ | ○ | ○ | ○ | ○ | ○ | ○ | ○ | ○ | ○ | ○ | ○ | ○ | ○ | ○ | ○ | ○ | ○ | ○ | ○ | ○ |
| ○ | ○ | ○ | ○ | ○ | ○ | ○ | ○ | ○ | ○ | ○ | ○ | ○ | ○ | ○ | ○ | ○ | ○ | ○ | ○ | ○ | ○ | ○ | ○ | ○ | ○ | ○ | ○ | ○ | ○ |
| ○ | ○ | ○ | ○ | ○ | ○ | ○ | ○ | ○ | ○ | ○ | ○ | ○ | ○ | ○ | ○ | ○ | ○ | ○ | ○ | ○ | ○ | ○ | ○ | ○ | ○ | ○ | ○ | ○ | ○ |
| ○ | ○ | ○ | ○ | ○ | ○ | ○ | ○ | ○ | ○ | ○ | ○ | ○ | ○ | ○ | ○ | ○ | ○ | ○ | ○ | ○ | ○ | ○ | ○ | ○ | ○ | ○ | ○ | ○ | ○ |

AC ON MAINS BATTERY ON SUMMARY
FAIL BYPASS LOW LOW BATTERY ALARM

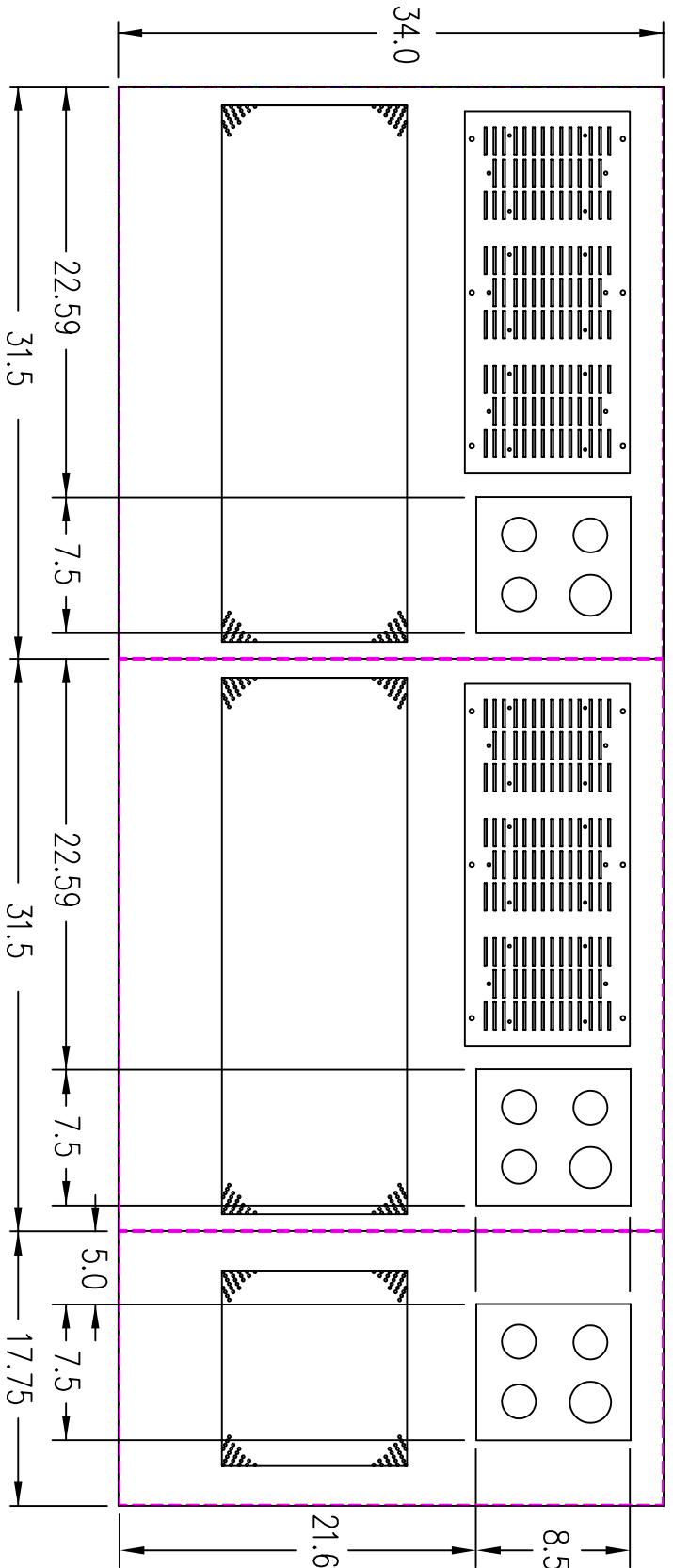
BOTH N.O. AND N.C. CONTACTS ARE PROVIDED FOR THE ABOVE ALARMS.
ONLY THE "INVERTER OFF" ALARM IS ENABLED FOR THE SUMMARY ALARM AT THE FACTORY.
REFER TO "ALARM AND SIGNAL WIRING" SECTION OF 5283-410 MANUAL TO LEARN MORE
ABOUT ENABLING OR DISABLING GENERAL/SUMMARY ALARMS.

| | | | |
|--|--------|---------------|------|
| COMPONENT LOCATION DRAWING | | FOR | |
| 80KVA, 480V INPUT, 120/208V OUTPUT | | 408VDC SYSTEM | |
| UNLESS OTHERWISE SPECIFIED DIMENSIONS ARE IN INCHES TOLERANCE ON FRACTIONS +/- 1/32 DECIMALS +/- 0.031 ANGLES +/- 1.5° | SCALE | DATE | DATE |
| DESIGN | DATE | DATE | DATE |
| DRAWN | DATE | DATE | DATE |
| WALLACE | 2-1-10 | | |
| CHKD | | | |
| APFD | | | |
| DATE | | | |
| 1004820F_210166 | | | |
| POWER SYSTEMS, INC. | | | |
| ELYRIA, OHIO 44035-7822 | | | |
| SHEET 1 OF 1 | ISSUE | | |
| 1 | 1 | | |

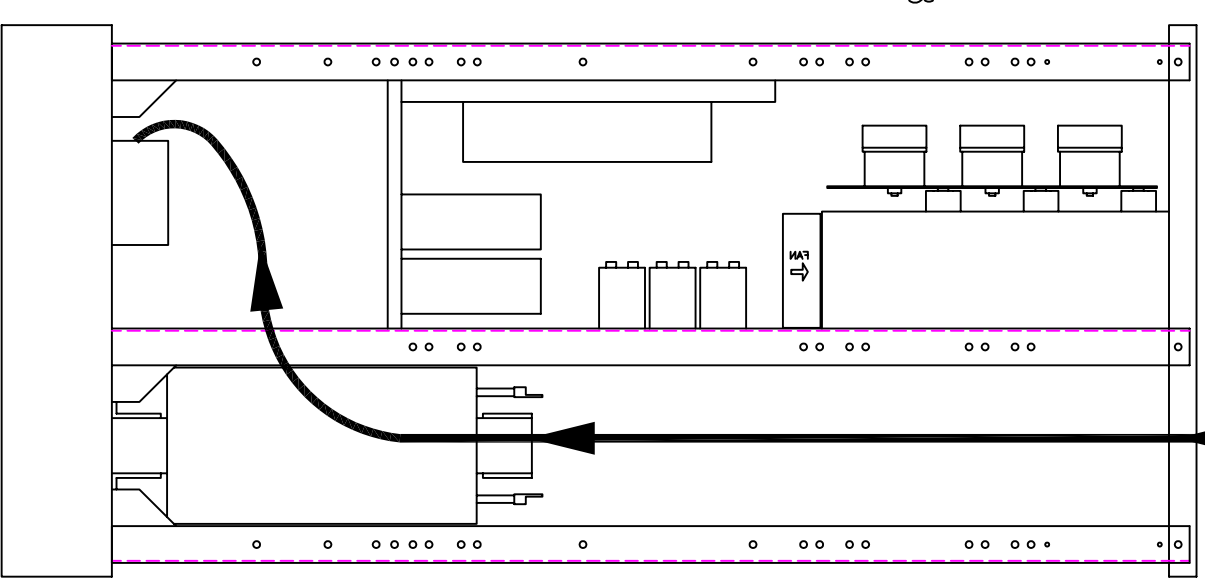
(VIEW FROM TOP OF CABINET)



100KVA CONFIGURATION (480V/208V)
 KNOCKOUT PLATE (TOP)
 (NOTE SIZES BELOW)
 KNOCKOUT PLATE
 2" 2" 3" 3"
 CONDUIT CONDUIT CONDUIT CONDUIT
 (DC) (AC) (BYPASS) (OUTPUT)



RIGHT SIDE



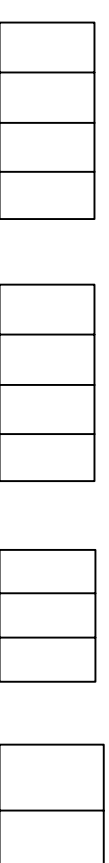
FOR TOP CABLE ENTRY, ROUTE WIRES DOWN RIGHT SIDE THROUGH WIREWAY CABINET TO TERMINALS LOCATED ON BASE PANEL.

TERMINATION CONFIGURATION (BOTTOM, FRONT)

TERMINAL BLOCK CAPACITY (AC INPUT): 350 MCM TO 6 GA.

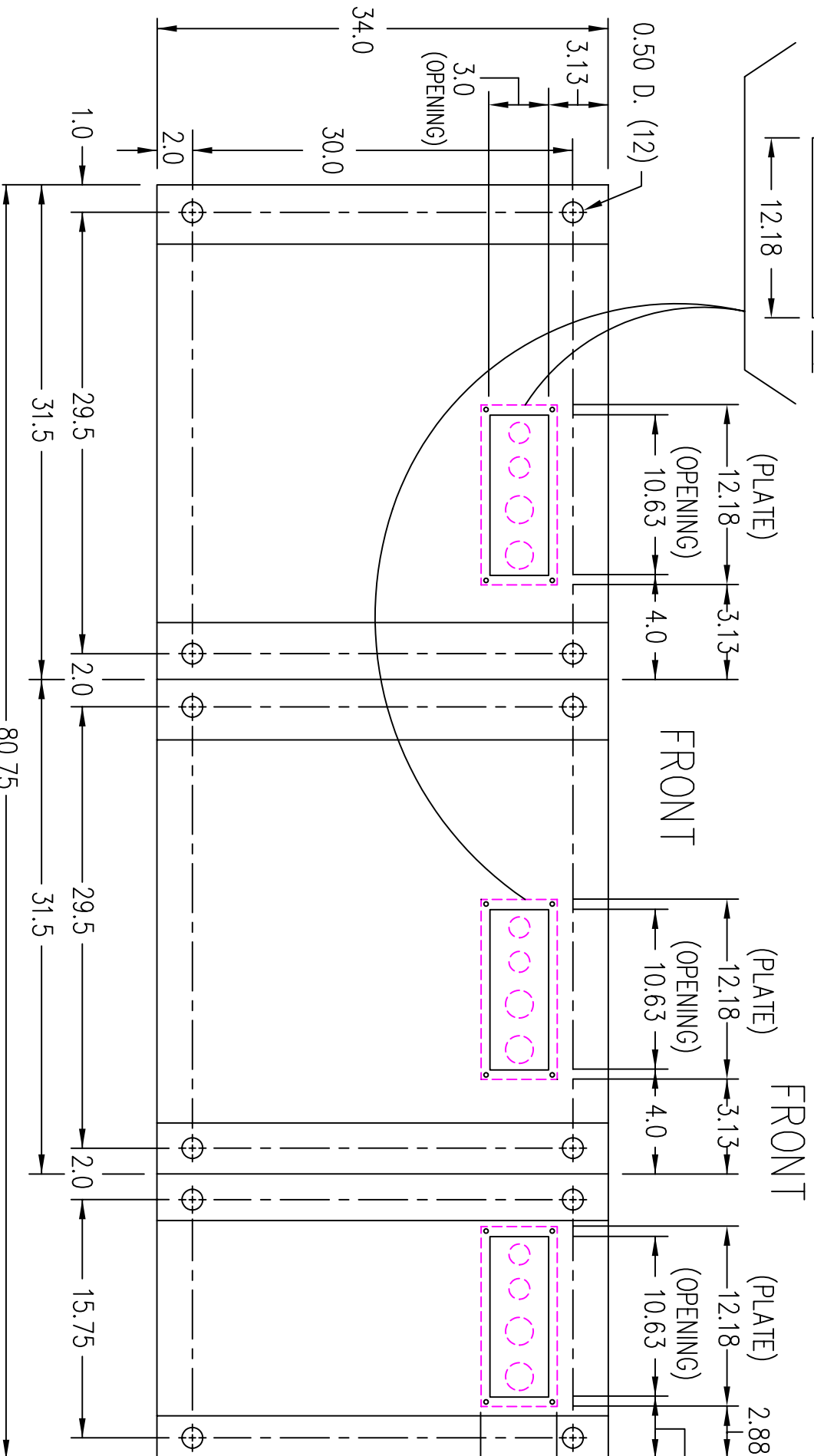
TERMINAL BLOCK CAPACITY (BYPASS INPUT/AC OUTPUT): 500 MCM TO 4 GA.

TERMINAL BLOCK CAPACITY (DC INPUT): (2) 500 MCM TO (2) 4 GA.



SYSTEM OUTPUT BYPASS INPUT AC INPUT DC INPUT

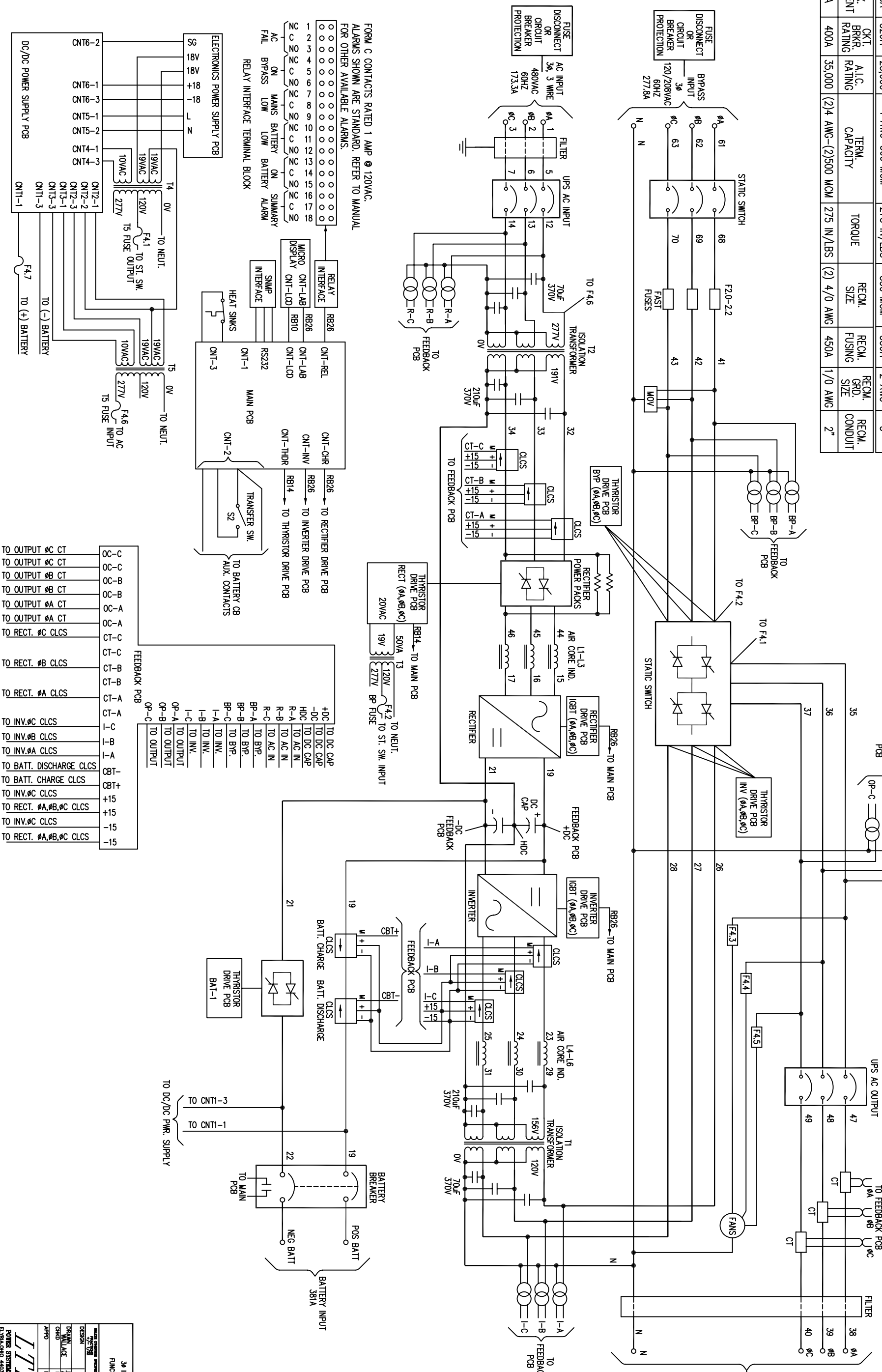
NOTE: ALL DIMENSIONS ARE IN INCHES UNLESS OTHERWISE SPECIFIED.



(VIEW FROM BOTTOM OF CABINET)

| AC INPUT | MAX. INPUT CURRENT | CKT. BRKR. RATING | A.I.C. RATING | TERM. CAPACITY | TORQUE | RECM. SIZE | RECM. FUSING | RECM. GRD. SIZE | RECM. CONDUIT |
|------------------------|--------------------|-------------------|---------------|----------------------|----------------|------------|--------------|-----------------|---------------|
| 480V | 173.3A | 200A | 25,000 | 6 AWG-350 MCM | 275 IN/LBS | 4/0 AWG | 250A | 2 AWG | 2" |
| BYPASS INPUT/AC OUTPUT | MAX. CURRENT | CKT. BRKR. RATING | A.I.C. RATING | TERM. CAPACITY | TORQUE | RECM. SIZE | RECM. FUSING | RECM. GRD. SIZE | RECM. CONDUIT |
| 120/208V | 277.8A | 320A | 25,000 | 4 AWG-500 MCM | 275 IN/LBS | 350 MCM | 350A | 2 AWG | 3" |
| DC INPUT | MAX. CURRENT | CKT. BRKR. RATING | A.I.C. RATING | TERM. CAPACITY | TORQUE | RECM. SIZE | RECM. FUSING | RECM. GRD. SIZE | RECM. CONDUIT |
| 360V | 381A | 400A | 35,000 | (2) 4 AWG-(2)500 MCM | 275 IN/LBS (2) | 4/0 AWG | 450A | 1/0 AWG | 2" |

- NOTES:
1. WIRE SIZES BASED ON 90°C COPPER CONDUCTORS OPERATING IN 30°C AMBIENT AND NEC TABLES 250-95 AND 310-16. INCREASE CONDUCTOR SIZE FOR LONG RUNS.
 2. CLOCKWISE PHASE ROTATION MUST BE OBSERVED FOR BYPASS AND AC INPUTS.
 3. CLCS = CLOSED LOOP CURRENT SENSOR



FORM C CONTACTS RATED 1 AMP @ 120VAC.
ALARMS SHOWN ARE STANDARD. REFER TO MANUAL
FOR OTHER AVAILABLE ALARMS.

- TO OUTPUT #C CT
- TO OUTPUT #B CT
- TO OUTPUT #A CT
- TO RECT. #C CLCS
- TO RECT. #B CLCS
- TO RECT. #A CLCS
- TO INV.#C CLCS
- TO INV.#B CLCS
- TO INV.#A CLCS
- TO BATT. DISCHARGE CLCS
- TO BATT. CHARGE CLCS
- TO INV.#C CLCS
- TO RECT. #A,#B,#C CLCS
- TO INV.#C CLCS
- TO RECT. #A,#B,#C CLCS