

PHYSICAL INSTALLATION

- 1 POSITION SYSTEM IN FINAL LOCATION AND LOWER ALL LOAD LEVELERS UNTIL BALL TRANSFERS ARE NOT SUPPORTING SYSTEM.
- 2 PROVIDE 36 INCHES OF SERVICE CLEARANCE ON EACH SIDE AND 12 INCHES AT THE REAR OF THE UPS. LOCATIONS NOT PERMITTING THE REQUIRED CLEARANCE SHOULD BE INSTALLED USING LIQUID-TIGHT FLEXIBLE METAL CONDUIT.

GENERAL NOTES:

- 1 ALL DIMENSIONS ARE IN INCHES UNLESS OTHERWISE SPECIFIED. DIMENSIONS WITHIN BRACKETS [] ARE IN CENTIMETERS.
- 2 WIRE SYSTEM AS INDICATED IN THE FOLLOWING PAGES.

MECHANICAL DATA

WEIGHT: 3kVA = 250 lbs [113 kg]

SIZE: SEE DRAWING AT LEFT
PAINT: SHERWIN WILLIAMS PT. No. F63A10317
COLOR: LIGHT GRAY

THERMAL DATA

HEAT DISSIPATION @ 100% LOAD
3kW = 2.2K BTU/HR MAX.

COOLING: FAN ASSISTED
OPERATING AMBIENT= 32F TO +104F
(0C TO +40C)
FOR MAXIMUM BATTERY LIFE, BATTERY MANUFACTURERS RECOMMEND AN OPERATING TEMPERATURE OF 77F (25C).

ENVIRONMENTAL DATA

NEMA 1= INDOOR DUTY, OPEN VENTILATED, NONCORROSIVE, CONTROLLED
ENVIRONMENT PER UL1778, DOES NOT PREVENT ENTRY OF DUST.
HUMIDITY RANGE: 0 TO 95% NON-CONDENSING
ALTITUDE DERATING: NONE BELOW 7000 FT.
10%/1000 FT. ABOVE
AUDIBLE NOISE: 50dB(A), 5 FT. IN FRONT OF UNIT, 4 FT. FROM FLOOR.

INSTALLER CONNECTIONS

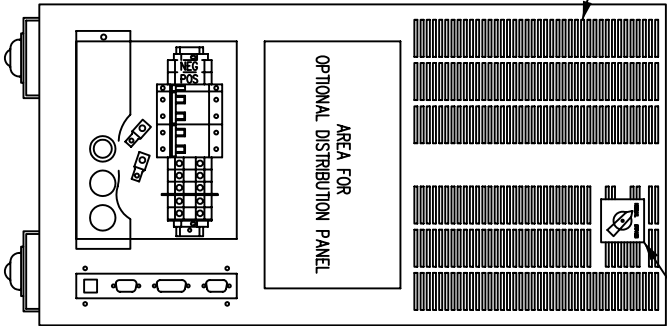
3kVA, 125VDC INVERTER SYSTEM

DESIGN	DATE	
DRAWN	DATE	
WALLACE	4-13-98	ICS196-123
CHKD	DATE	
APPD	DATE	
KJ.MOROG	4-13-98	SHEET 1 OF 3
		ISSUE

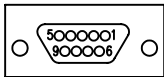
AIR EXHAUST VENTS
PROVIDE MINIMUM 12"
SPACE AT REAR OF UPS.

BACK OF SYSTEM

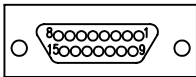
INTERNAL BYPASS SWITCH
(OPTIONAL)



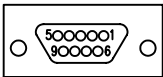
(J2) PIN No.	ALARM
5	COMMON
6	ON BYPASS (N.O.)
7	LOW BATTERY (N.O.)
8	GEN. ALARM (N.O.)
9	UTILITY FAIL (N.O.)



J2
ALARM CONTACT
PORT



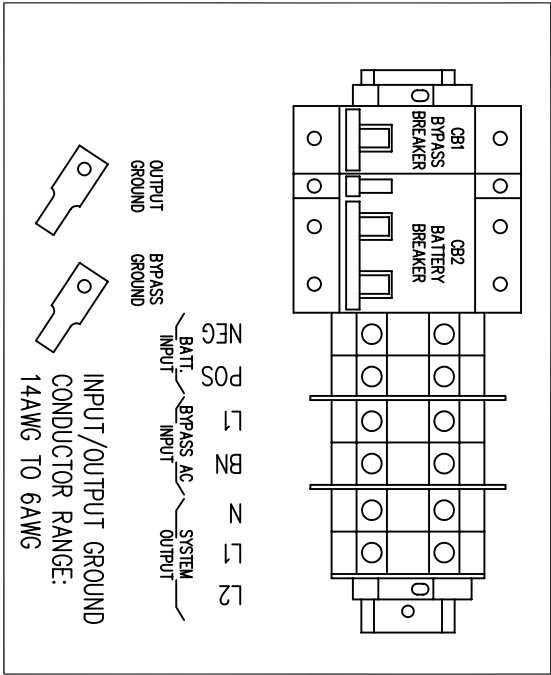
J3
REMOTE ALARM
PORT
(OPTIONAL)



J1
RS-232 PORT
DB9S (FEMALE)
DCE CONNECTION
(OPTIONAL)

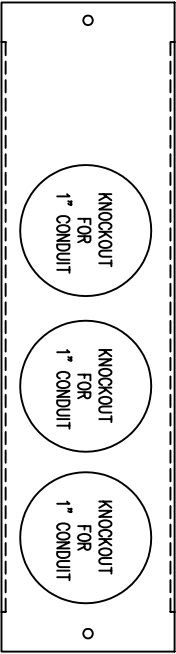


MODEM PORT
STD. RJ-11 JACK
(PART OF RS-232
OPTION)



BYPASS AC INPUT VOLTAGE	CONNECT TO	SYSTEM OUTPUT	CONNECT TO	BATTERY INPUT	CONNECT TO
120V	L1 & (BN NEUTRAL)	120V	L1 & N	125VDC	POS & NEG

COVER PLATE



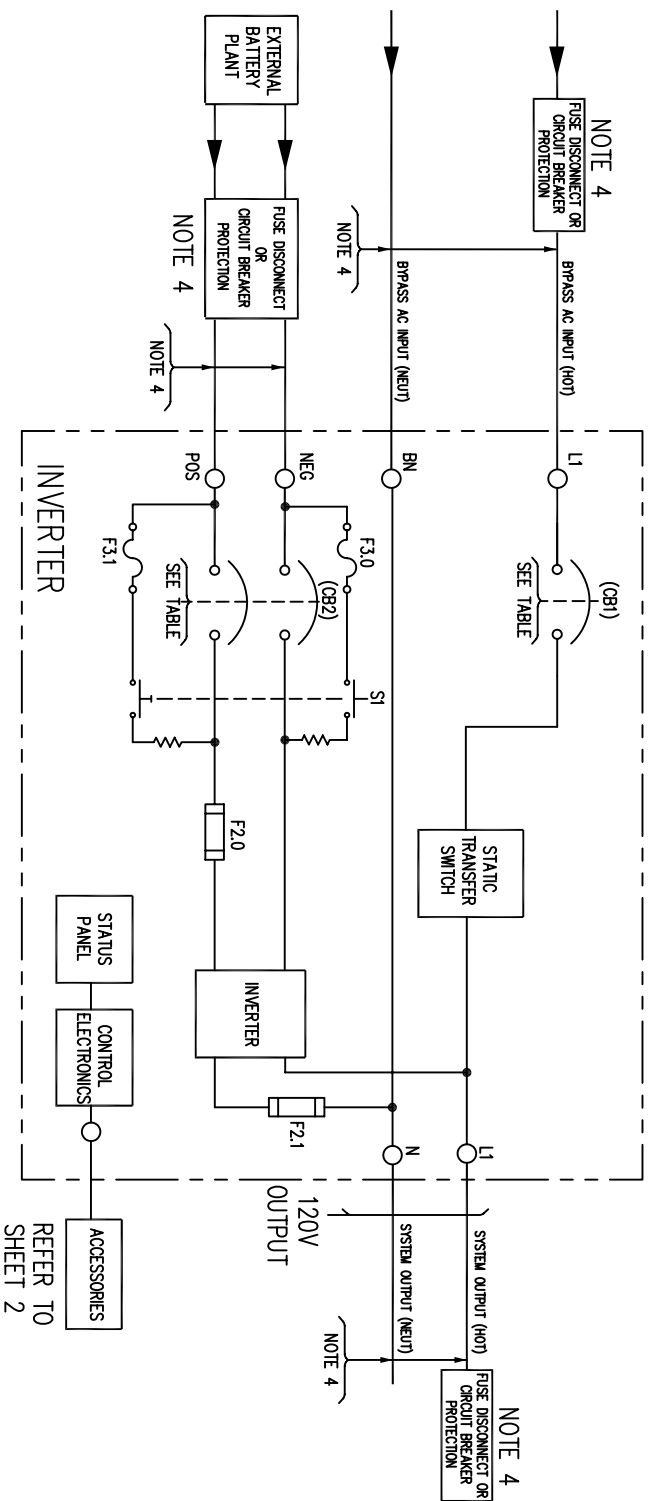
NOTES:
1 NOT TO EXCEED CLASS 2 LIMITATIONS.
REFER TO N.E.C. ARTICLE 725-31,
TABLES (a) & (b).

INSTALLER CONNECTIONS
3KVA, 125VDC INV.

IC5196-123

SHEET 2 OF 3

ISSUE



- NOTES:
- 1 WIRE SIZE RECOMMENDATIONS BASED ON 90°C COPPER CONDUCTORS OPERATING IN 30°C AMBIENT AND NEC TABLES 250–95 & 310–16, INCREASE CONDUCTOR SIZE FOR LONG RUNS.
 - 2 ALL FIELD WIRING TO BE COPPER CONDUCTOR ONLY.
 - 3 ALL GROUNDS SHOWN SHALL BE CONNECTED SEPARATELY TO A SINGLE GROUNDING POINT AT THE SOURCE SERVICE EQUIPMENT, PER IEEE STD. 446–1980 FIG. 72.
 - 4 FUSE DISCONNECT OR CIRCUIT BREAKER PROTECTION TO UPS TO BE PROVIDED BY CUSTOMER, SEE TABLE BELOW FOR RECOMMENDED PROTECTION SIZING AND WIRE SIZING.
 - 5 SPECIFIED TORQUE VALUES ARE FOR INTERNAL WIRING CONNECTIONS ONLY.

SIZE	SPEC. No.	BYPASS AC INPUT						BATTERY LEAD						SYSTEM OUTPUT					
		BYPASS AC INPUT	MAX INPUT CURRENT	(CB1) RATING	A.L.C. RATING	TERM. CAPACITY	TORQUE	RECM. SIZE	RECM. FUSING	RECM. GRO. SIZE	(CB2) RATING	NOMINAL VOLTAGE	A.L.C. RATING	TERM. CAPACITY	TORQUE	RECM. SIZE	RECM. FUSING	OUTPUT VOLTAGE	FULL LOAD CURRENT (AMPS)
3kVA	5196-123	120V	25 AMPS	32A	10,000	18-2 AWG	25 IN/LB	8 GA	35A	10 GA.	32A	120VDC	10,000	18-2 AWG	25 IN/LB	8 GA	32A	120V	25 AMPS