

NOTES:

1. UNLESS OTHERWISE SPECIFIED, ALL DIMENSIONS ARE IN INCHES. DIMENSIONS WITHIN BRACKETS [ ] ARE IN MILLIMETERS.
2. RECOMMENDED CLEARANCE FOR AIR FLOW AND SERVICEABILITY : LEFT SIDE 30" [762] , RIGHT SIDE 18" [457.2] AND BACK OF SYSTEM 12" [304.8].

**LTI Power Systems, Inc.**

TEL. (440) 327-5050

10800 MIDDLE AVE. BLDG. B ELYRIA, OHIO

PROUPS B1250 ENCLOSURE

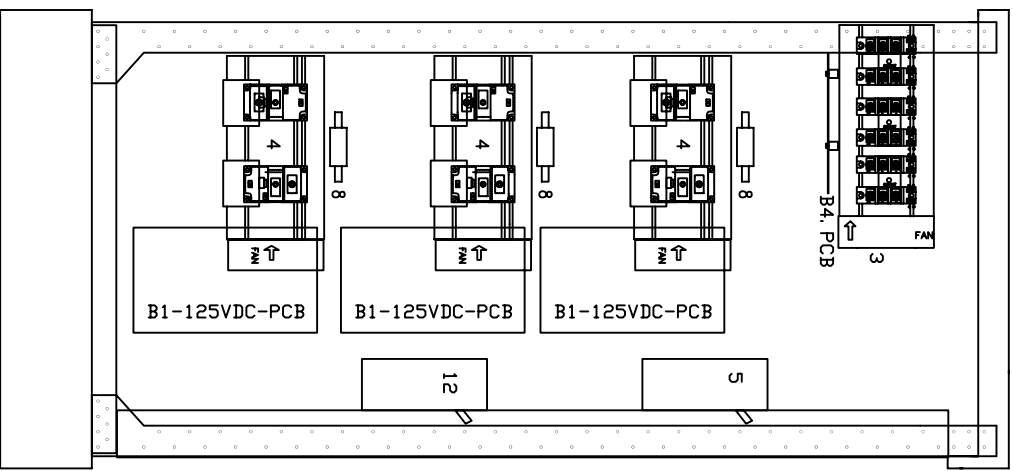
10KVA, 125VDC INVERTER

WEIGHT: 800 LBS. (363.2 kg)

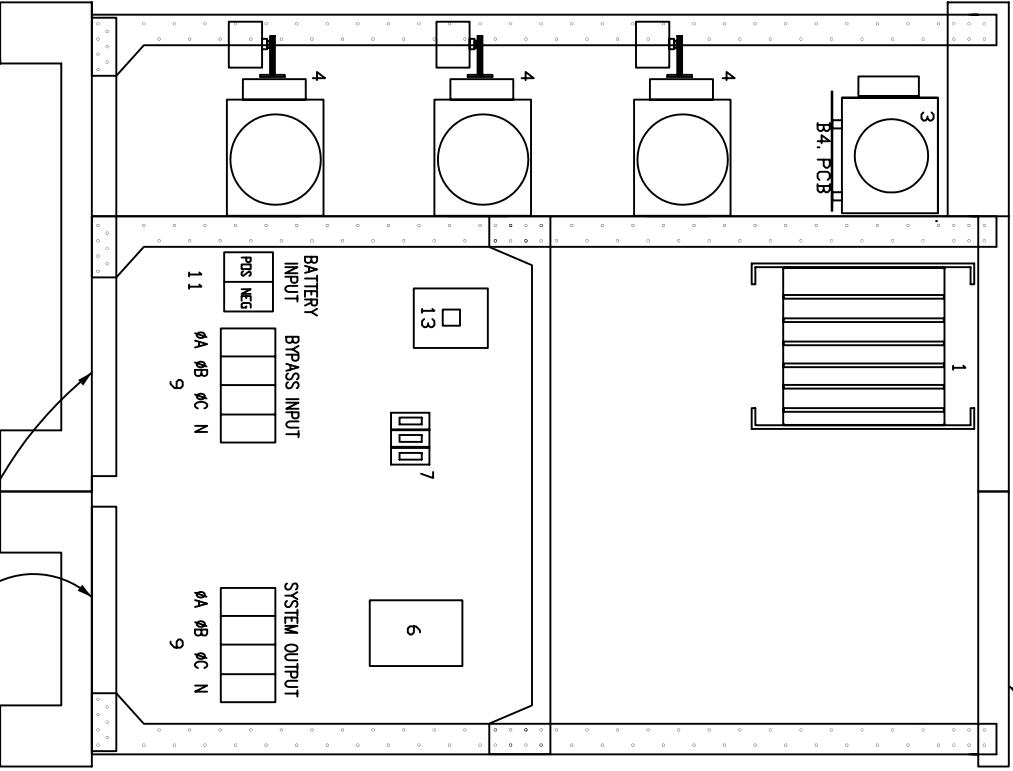
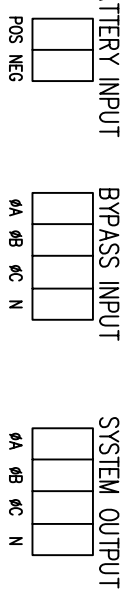
LTI - PROUPS

REV.

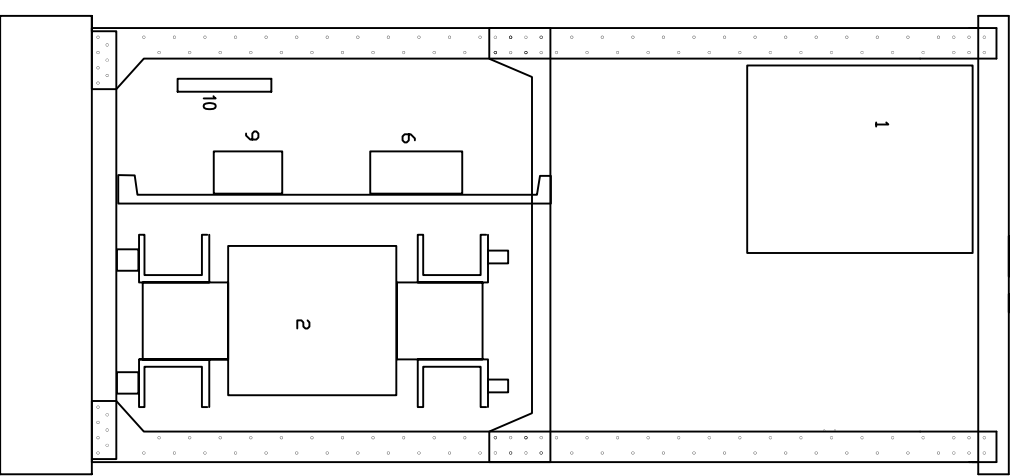
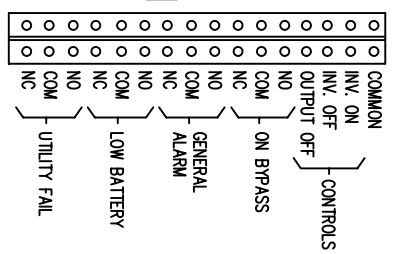
- 1 - ELECTRONICS RACK
- 2 - INVERTER TRANSFORMER
- 3 - STATIC SWITCH POWER PACK
- 4 - INVERTER POWER PACK
- 5 - CIRCUIT BREAKERS
- 6 - RFI FILTER
- 7 - BYPASS FUSES
- 8 - INVERTER FUSES
- 9 - INPUT/OUTPUT TERMINALS
- 10 - RELAY INTERFACE TERMINALS
- 11 - BATTERY INPUT TERMINALS
- 12 - BATTERY CIRCUIT BREAKER
- 13 - CONTACTOR



TERMINATION CONFIGURATION (BOTTOM, FRONT)  
 TERMINAL BLOCK CAPACITY : 2/0 TO 14 AWG.  
 TORQUE: 50 IN. LBS.



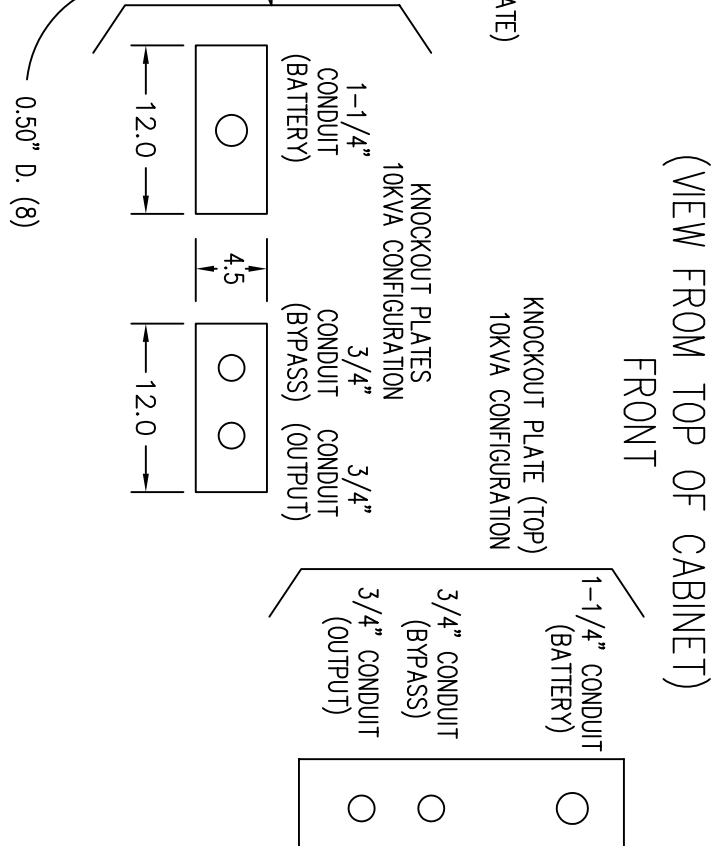
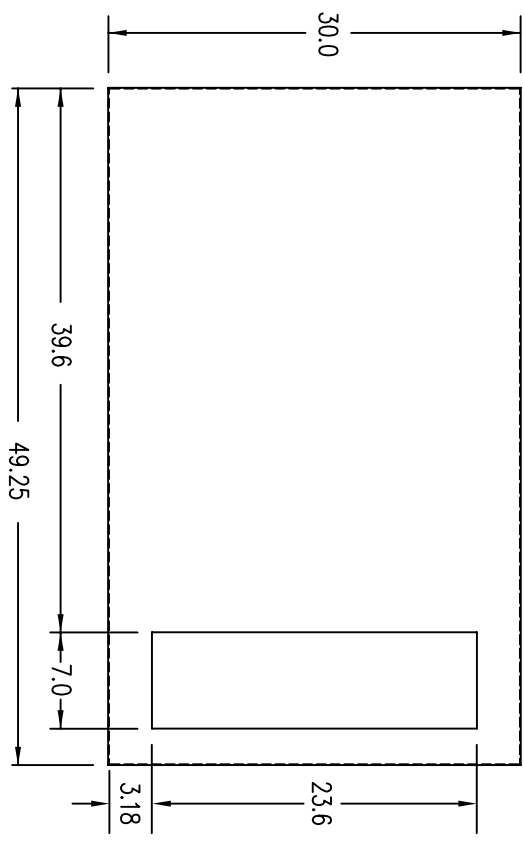
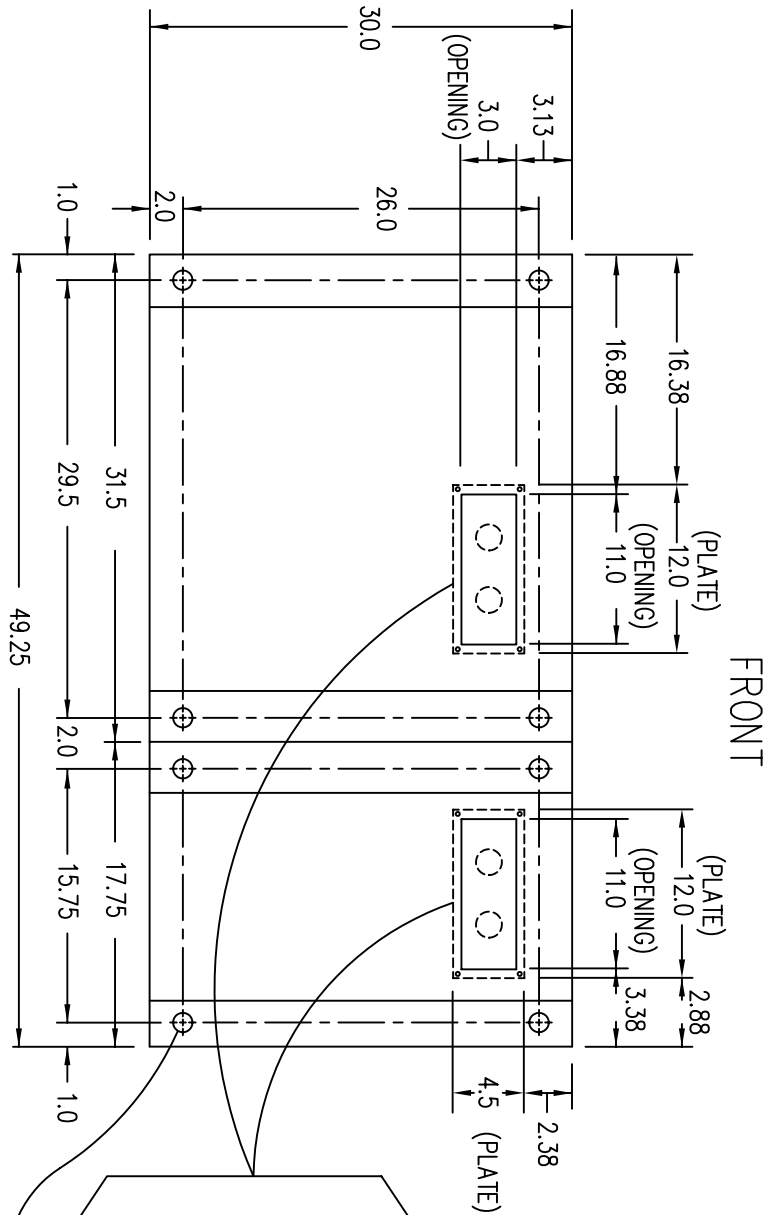
RELAY INTERFACE TERMINATIONS  
 TERMINAL CAPACITY: 14 TO 20 AWG.  
 RELAYS RATED 1A @ 24VDC, 0.5A @ 120VAC RESISTIVE



TERMINATION CONFIGURATION (BOTTOM, FRONT)  
 TERMINAL BLOCK CAPACITY : 2/0 TO 14 AWG  
 TORQUE: 50 IN/LBS.



NOTE: ALL DIMENSIONS ARE IN INCHES UNLESS OTHERWISE SPECIFIED.  
 WHEN USING TOP CABLE ENTRY, ROUTE WIRES DOWN ALONG RIGHT SIDE OF CABINET  
 TO BOTTOM, FRONT TERMINAL BLOCK LOCATION.



LTI Power Systems, Inc.

TEL. (440) 327-5050 10800 Middle Ave. Bldg. B Elyria, Ohio 44035

10KVA, 125VDC INVERTER ASSEMBLY

SHEET 1 OF 1

LTI-PROUPS

CAD DWG NAME: 10K208L\_125BASE

REV. 1

- NOTES:
1. WIRE SIZES BASED ON 90°C COPPER CONDUCTORS OPERATING IN 30°C AMBIENT AND NEC TABLES 250-95 AND 310-16. INCREASE CONDUCTOR SIZE FOR LONG RUNS.
  2. CLOCKWISE PHASE ROTATION MUST BE OBSERVED FOR BYPASS INPUT.

DC INPUT	MAX. INPUT CURRENT	MAX. BRKNG. RATING	CT RATING	A.I.C. RATING	TERML. CAPACITY	TORQUE	RECOM. FUSING SIZE	RECOM. CONDUIT
120V/208V	27.8A	40A	25,000	14-2/0 AWG	50 IN/LBS	8 AWG	8 AWG	3/4"
120/208V	27.8A	40A	25,000	14-2/0 AWG	50 IN/LBS	8 AWG	8 AWG	3/4"
125V	91.4A	125A	25,000	14-2/0 AWG	50 IN/LBS	1 AWG	150A	1-1/4"

