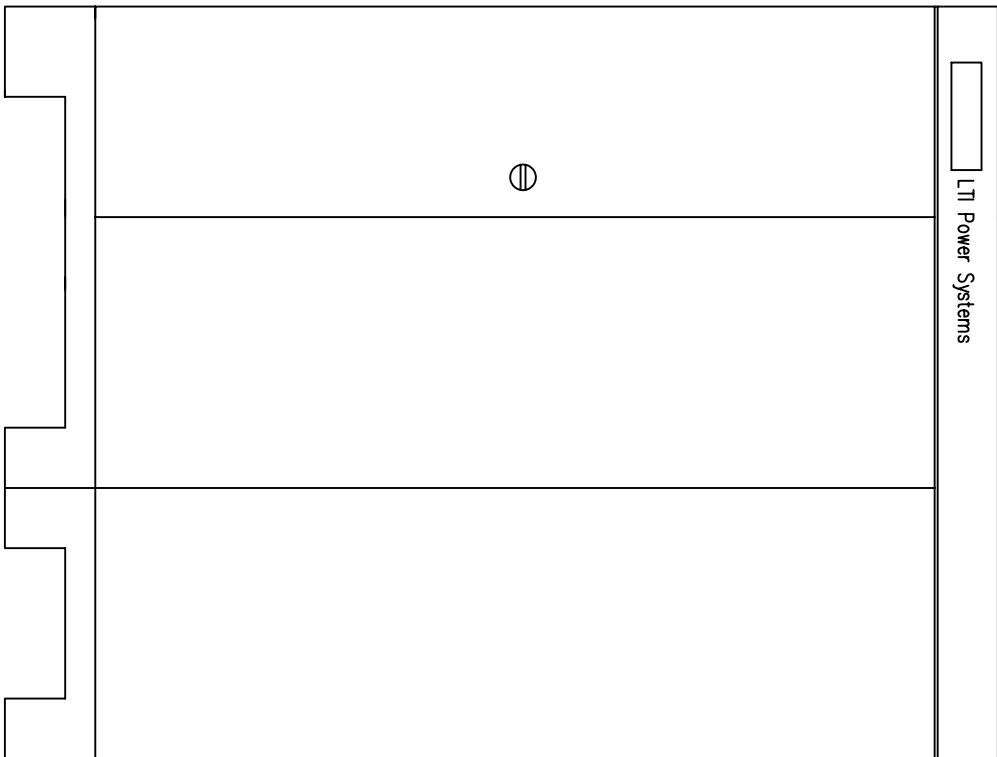
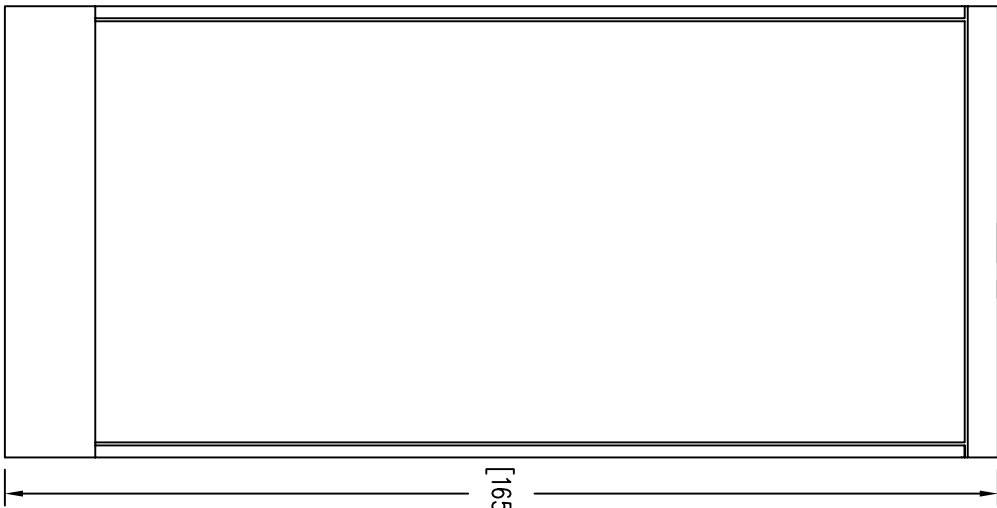


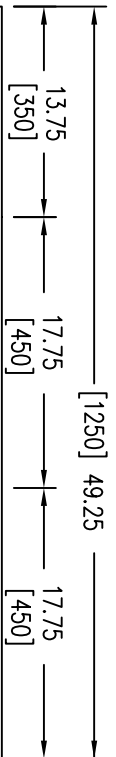
LEFT



FRONT



RIGHT



- NOTES:
1. UNLESS OTHERWISE SPECIFIED, ALL DIMENSIONS ARE IN INCHES. DIMENSIONS WITHIN BRACKETS [] ARE IN MILLIMETERS.
 2. RECOMMENDED CLEARANCE FOR AIR FLOW AND SERVICEABILITY : LEFT SIDE 30" [762] , RIGHT SIDE 18" [457.2] AND BACK OF SYSTEM 18" [457.2].

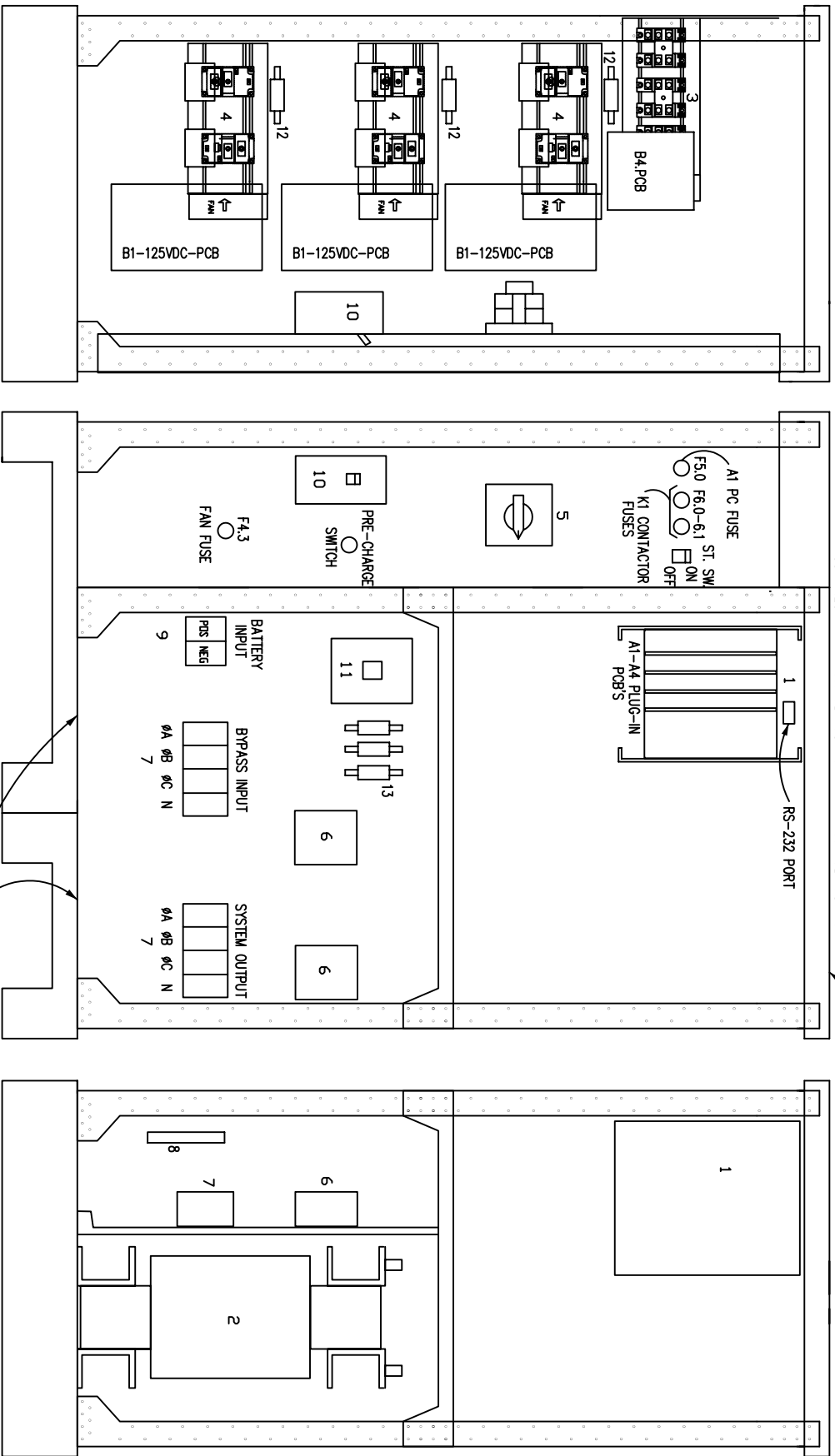
LTI Power Systems, Inc.
 TEL. (440) 327-5050 10800 MIDDLE AVE. BLDG. B ELYRIA, OHIO

PROUPS B1250 ENCLOSURE
 20KVA, 125VDC INVERTER
 WEIGHT: 1,200 LBS. (544 kg)

LTI - PROUPS
 SHEET 1 OF 1 CAD DWG NAME: B1250CAB_20_125VDC.JWY

REV. 1

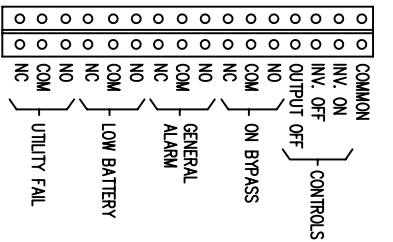
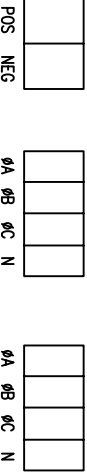
- 1 - ELECTRONICS RACK
- 2 - INVERTER TRANSFORMER
- 3 - STATIC SWITCH POWER PACKS
- 4 - INVERTER POWER PACKS
- 5 - BYPASS ROTARY SWITCH
- 6 - RELI FILTERS
- 7 - INPUT/OUTPUT TERMINALS
- 8 - RELAY INTERFACE TERMINALS
- 9 - BATTERY INPUT TERMINALS
- 10 - BATTERY CIRCUIT BREAKER
- 11 - CONTACTOR
- 12 - INVERTER FUSES (F3.0-3.2)
- 13 - BYPASS FUSES (F2.0-2.2)



TERMINATION CONFIGURATION (BOTTOM, FRONT)
 TERMINAL BLOCK CAPACITY : 2/0 TO 14 AWG.
 TORQUE: 50 IN. LBS.

TERMINAL BLOCK CAPACITY (DC) : 350MCM TO 6 AWG.-TORQUE 275 IN. LBS.
 RELAYS RATED 1A @ 24VDC, 0.5A @ 120VAC RESISTIVE

RELAY INTERFACE TERMINATIONS
 TERMINAL CAPACITY : 14 TO 20 AWG.



LTI Power Systems, Inc.

TEL: (440) 327-5050

10800 Middle Ave. Bldg. B Elyria, Ohio 44035

ProUPS 20KVA, 125VDC INVERTER ASSEMBLY

LTI-ProUPS

CAD DWG NAME: 20K208INV--125VDC

REV. 1

TERMINATION CONFIGURATION (BOTTOM, FRONT)

TERMINAL BLOCK CAPACITY : 2/0 TO 14 AWG

TORQUE: 50 IN/LBS.

TERMINAL BLOCK CAPACITY (BATTERY) : 350 MCM TO 6 AWG
TORQUE: 275 IN/LBS.



POS NEG
BATTERY INPUT



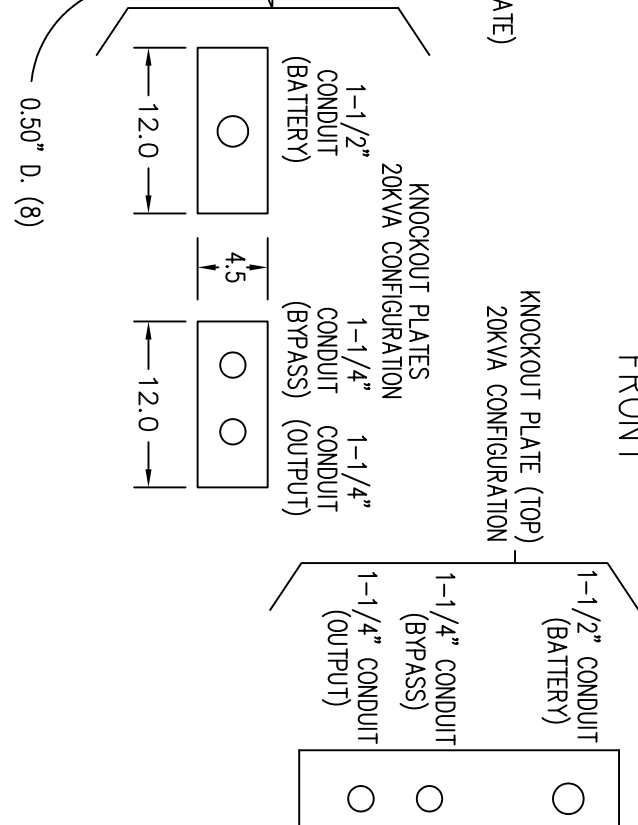
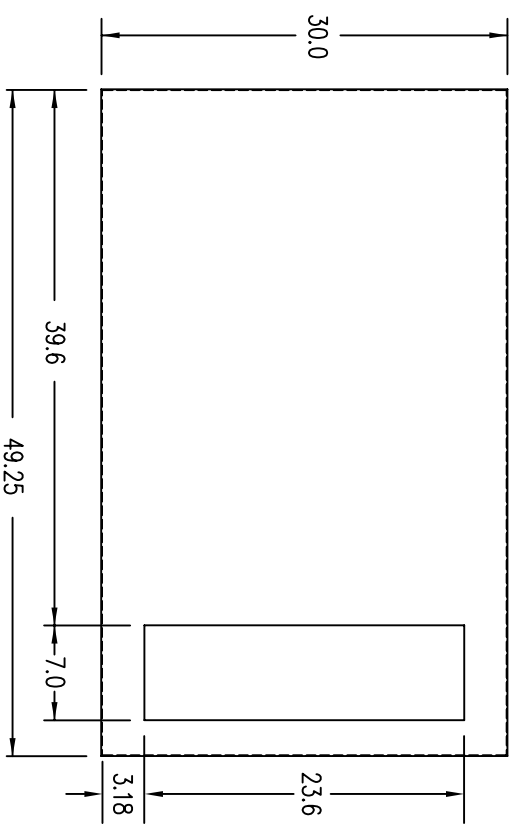
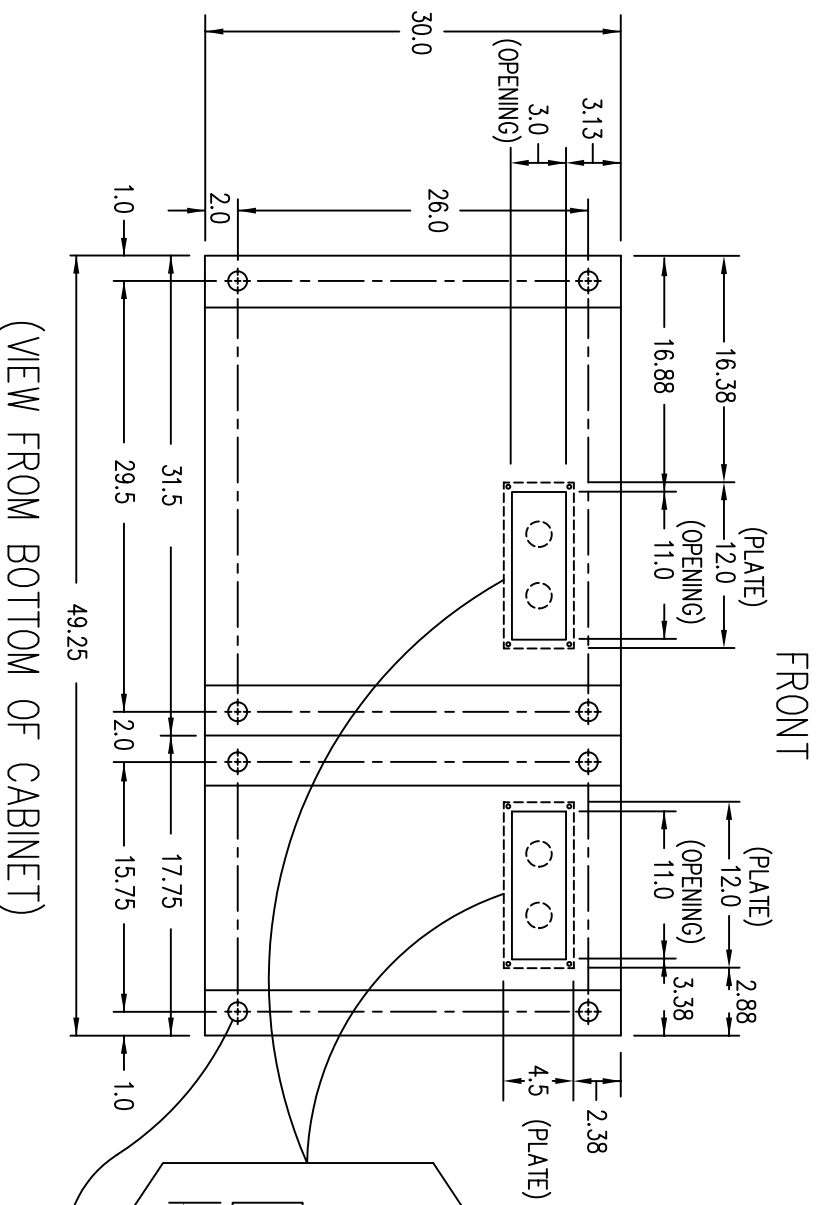
4A 4B 4C N
BYPASS INPUT



4A 4B 4C N
SYSTEM OUTPUT

NOTE: ALL DIMENSIONS ARE IN INCHES UNLESS OTHERWISE SPECIFIED.

WHEN USING TOP CABLE ENTRY, ROUTE WIRES DOWN ALONG RIGHT SIDE OF CABINET TO BOTTOM, FRONT TERMINAL BLOCK LOCATION.



LTI Power Systems, Inc.

TEL: (440) 327-5050

10800 Middle Ave. Bldg. B Elyria, Ohio 44035

20KVA, 125VDC INVERTER ASSEMBLY

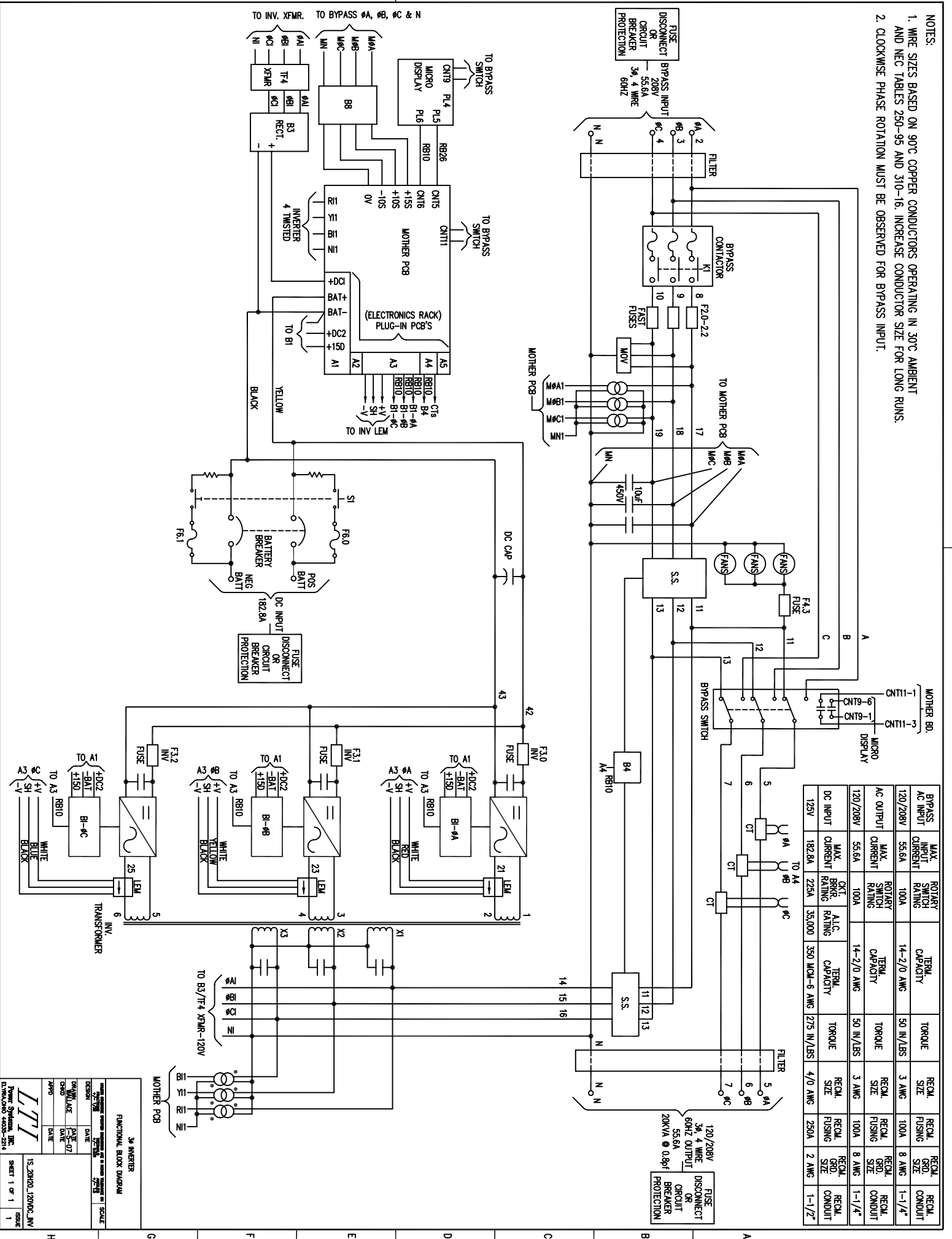
SHEET 1 OF 1

LTI-PROUPS

CAD DWG NAME: 20K208INV_125BASE

REV. 1

- NOTES:
1. WIRE SIZES BASED ON 90°C COPPER CONDUCTORS OPERATING IN 30°C AMBIENT AND NEC TABLES 250-95 AND 310-16. INCREASE CONDUCTOR SIZE FOR LONG RUNS.
 2. CLOCKWISE PHASE ROTATION MUST BE OBSERVED FOR BYPASS INPUT.



DC INPUT	MAX. INPUT CURRENT	ROTIARY SWITCH RATING	TERM. CAPACITY	TORQUE	RECOM. SIZE	RECOM. FUSING	RECOM. GND. SIZE	RECOM. CONDUIT
120V	55.6A	100A	14-2/0 AWG	50 IN/LBS	3 AWG	100A	8 AWG	1-1/4"
208V	55.6A	100A	14-2/0 AWG	50 IN/LBS	3 AWG	100A	8 AWG	1-1/4"
DC INPUT	182.8A	225A	350 MCM-6 AWG	275 IN/LBS	4/0 AWG	250A	2 AWG	1-1/2"

3Φ INVERTER
FUNCTIONAL BLOCK DIAGRAM

DATE: 2/7/88
DESIGN: JAC
CHECKED: JAC
DATE: 2/7/88
DRAWN: JAC
DATE: 2/7/88

15, 208/120V, 120/208V, 120/208V, 120/208V

ISSUE: 1

SCALE: 1"

15, 208/120V, 120/208V, 120/208V, 120/208V

15, 208/120V, 120/208V, 120/208V, 120/208V