

Notes: Unless otherwise specified, dimensions are in inches. Dimensions within brackets [] are in millimeters.
 Recommended clearance for serviceability is 36" [914] in the front and 6" [152] on the remaining sides.

TO REMOVE FRONT FILTER, REMOVE TOP SCREW FROM EACH SIDE BRACKET. ROTATE BRACKETS AWAY FROM FILTER, THEN SLIDE FILTER UP AND REPLACE AS NECESSARY.

LTI Power Systems, Inc.

PROUPS B800 ENCLOSURE
 10KVA

15KVA WEIGHT W/SKID: 1360 LBS. (612 kg)

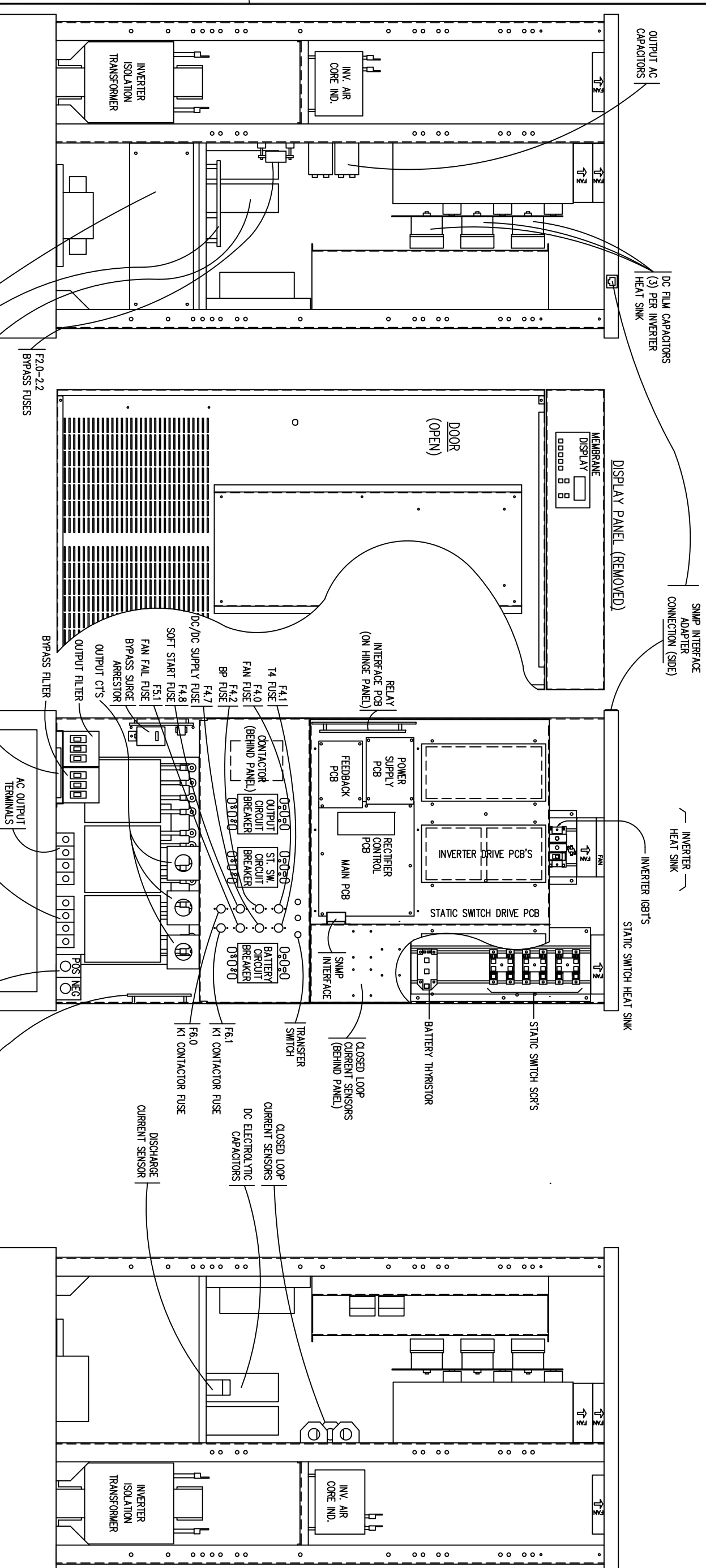
LTI-PROUPS

TEL. (440) 327-5050

10800 Middle Ave. Elyria, Ohio 44035

CAD DWG NAME: B800CAB_10H200

REV. 1



(SHOWN WITH PROTECTIVE COVERS OFF)

FORM C CONTACTS RATED 1 AMP @ 120VAC.
ALARMS SHOWN ARE STANDARD. REFER TO MANUAL
FOR OTHER AVAILABLE ALARMS.

1	2	3	4	5	6	7	8	9	10	11	12
○	○	○	○	○	○	○	○	○	○	○	○
○	○	○	○	○	○	○	○	○	○	○	○
○	○	○	○	○	○	○	○	○	○	○	○
○	○	○	○	○	○	○	○	○	○	○	○
○	○	○	○	○	○	○	○	○	○	○	○
○	○	○	○	○	○	○	○	○	○	○	○
○	○	○	○	○	○	○	○	○	○	○	○
○	○	○	○	○	○	○	○	○	○	○	○
○	○	○	○	○	○	○	○	○	○	○	○
○	○	○	○	○	○	○	○	○	○	○	○
○	○	○	○	○	○	○	○	○	○	○	○
○	○	○	○	○	○	○	○	○	○	○	○
○	○	○	○	○	○	○	○	○	○	○	○
○	○	○	○	○	○	○	○	○	○	○	○
○	○	○	○	○	○	○	○	○	○	○	○
○	○	○	○	○	○	○	○	○	○	○	○

COMPONENT LOCATION DRAWING

FOR
10KVA, 125VDC INPUT, 120/208V OUTPUT
INVERTER SYSTEM

DESIGN	DATE	<p>LT</p> <p>POWER SYSTEMS, INC. ELYRIA, OHIO 44035-7822</p>	<p>LT10H200</p>
DRAWN	DATE		
CHKD	DATE		
APPD	DATE		
SCALE	DATE		

UNLESS OTHERWISE SPECIFIED, DIMENSIONS ARE IN INCHES. TOLERANCE ON FRACTIONS +/- 1/32. DECIMALS +/- 0.031 ANGLES +/- 1.5°

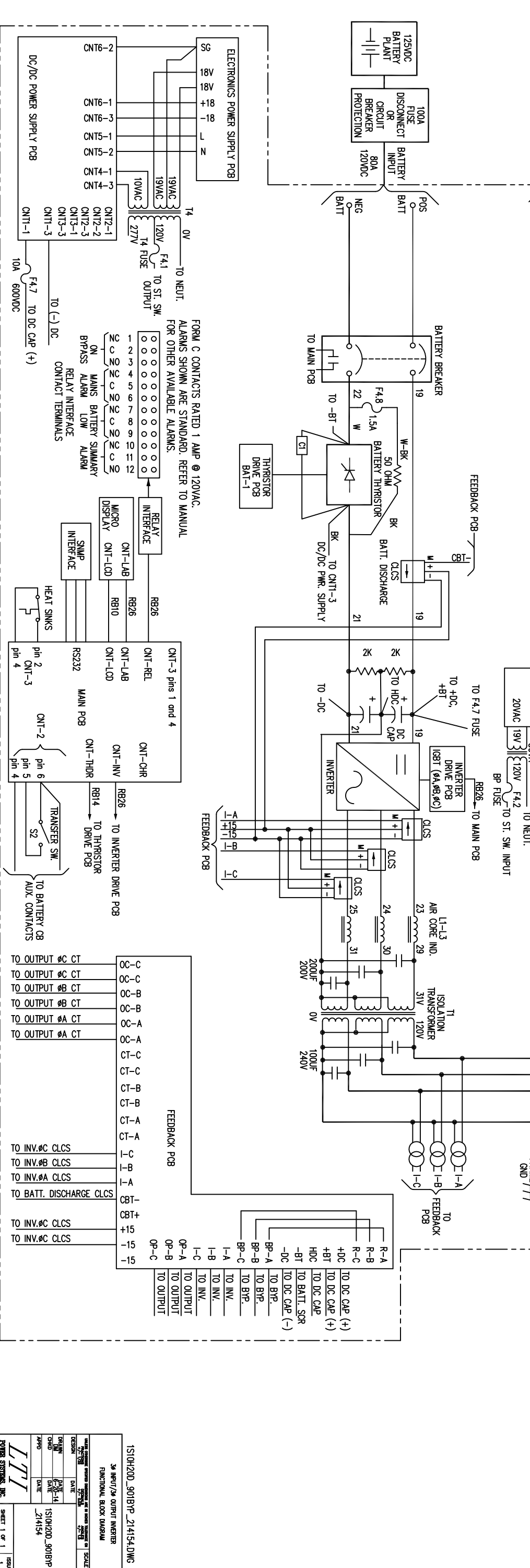
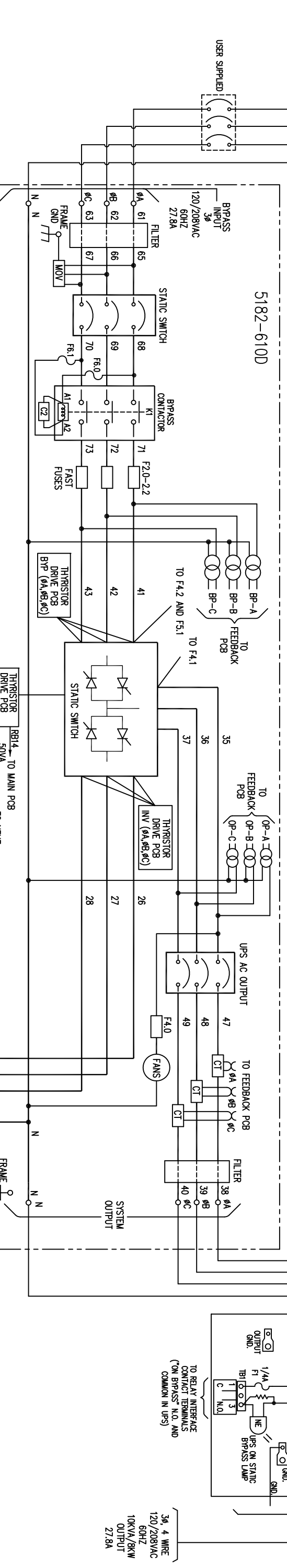
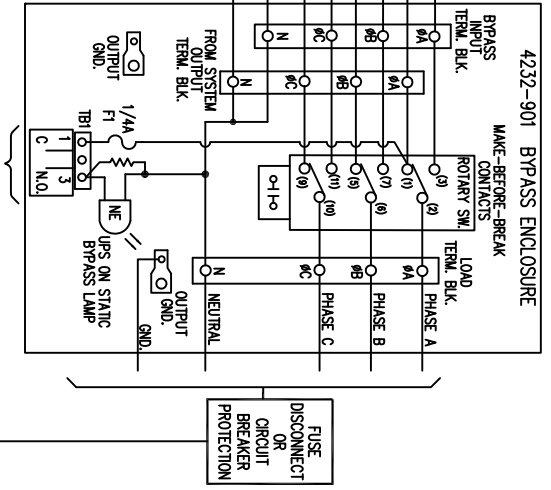
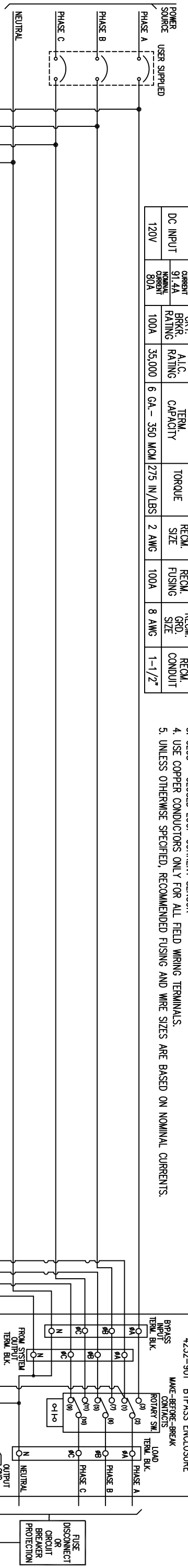
SHEET 1 OF 1

ISSUE 1

3ø, 4 WIRE
120/208VAC
60HZ

BYPASS INPUT/AC OUTPUT	NOMINAL CURRENT	BRKR RATING	A.I.C. RATING	TERM. CAPACITY	TORQUE	REC.M. SIZE	REC.M. FUSING	REC.M. GRD. SIZE	REC.M. CONDUIT
120/208V	27.8A	40A	25,000	14-2/0 AWG	50 IN/LBS	8 AWG	40A	10 AWG	1"
DC INPUT	91.4A NOMINAL CURRENT 80A	100A	35,000	6 GA - 350 MCM	275 IN/LBS	2 AWG	100A	8 AWG	1-1/2"

- NOTES:
1. WIRE SIZES BASED ON 75°C COPPER CONDUCTORS OPERATING IN 40°C AMBIENT AND NEC TABLES 250-95 AND 310-16. INCREASE CONDUCTOR SIZE FOR LONG RUNS.
 2. CLOCKWISE PHASE ROTATION MUST BE OBSERVED FOR BYPASS INPUT.
 3. CLCS = CLOSED LOOP CURRENT SENSOR
 4. USE COPPER CONDUCTORS ONLY FOR ALL FIELD WIRING TERMINALS.
 5. UNLESS OTHERWISE SPECIFIED, RECOMMENDED FUSING AND WIRE SIZES ARE BASED ON NOMINAL CURRENTS.



FORM C CONTACTS RATED 1 AMP @ 120VAC.
ALARMS SHOWN ARE STANDARD. REFER TO MANUAL FOR OTHER AVAILABLE ALARMS.

1S10H200_901BYP_214154.DWG

3ø INPUT/3ø OUTPUT INVERTER
FUNCTIONAL BLOCK DIAGRAM
SCALE: 1"=1"

DATE: 07/14/14
DRAWN BY: J. J. J.
CHECKED BY: J. J. J.
DATE: 07/14/14
APP'D: J. J. J.

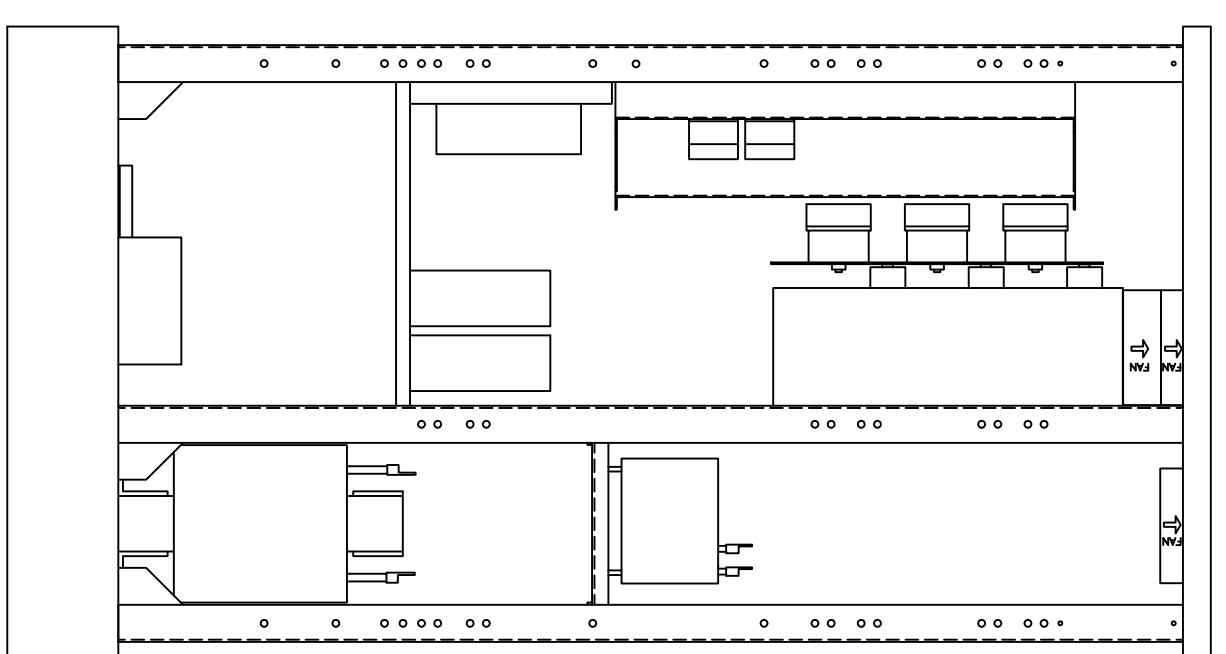
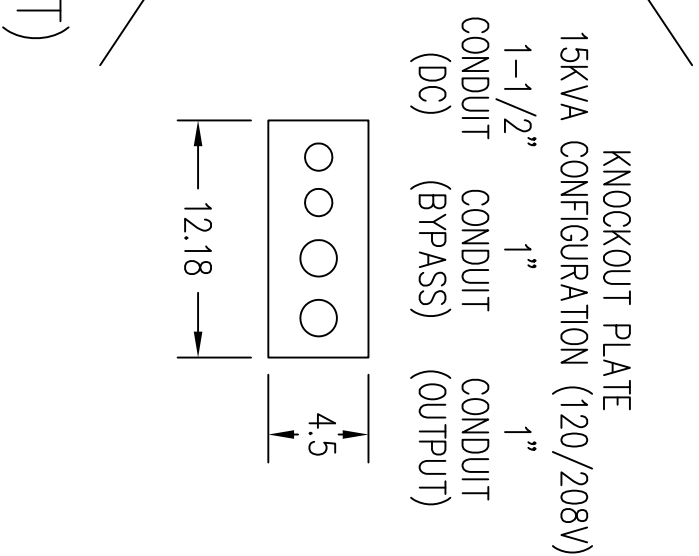
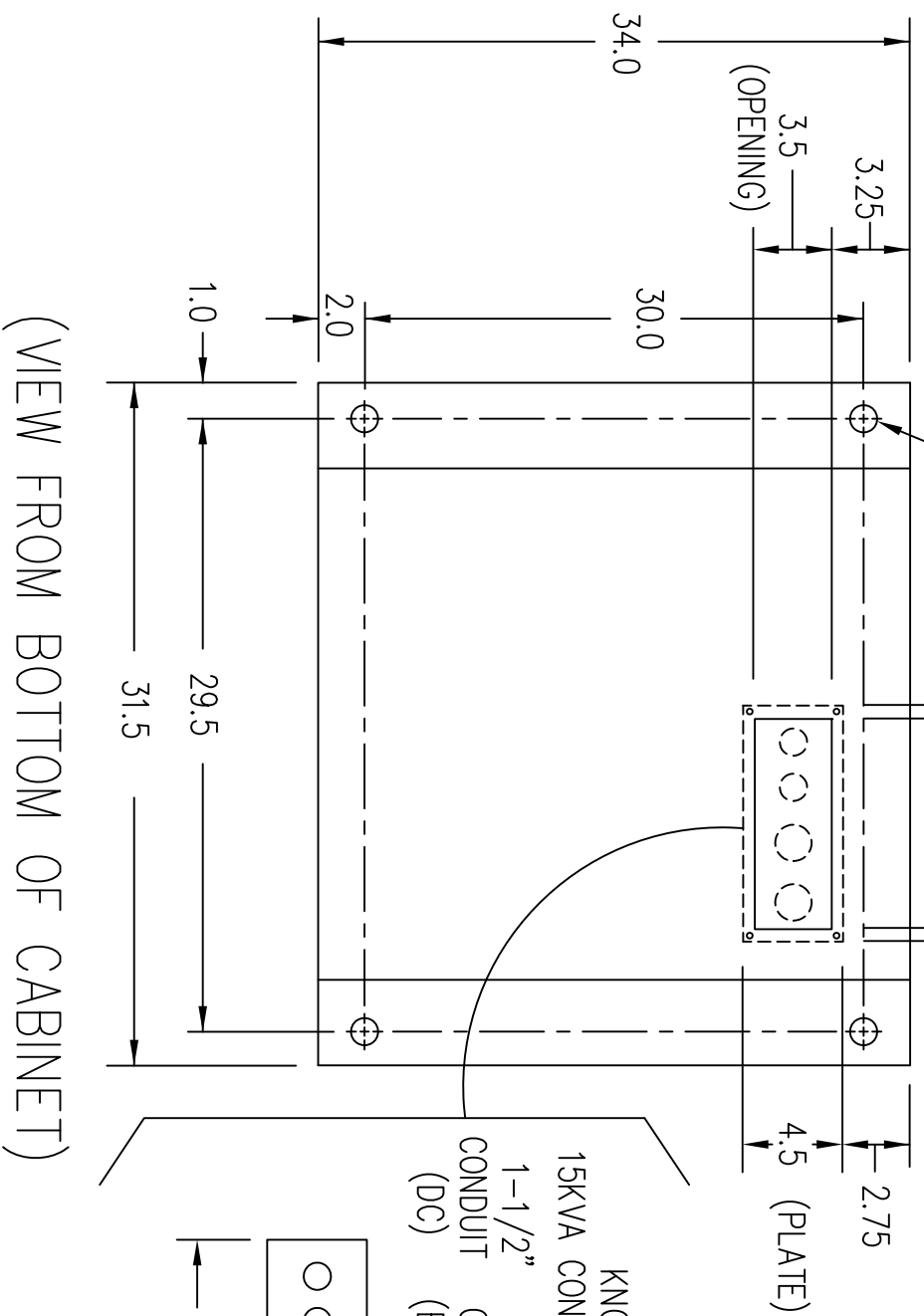
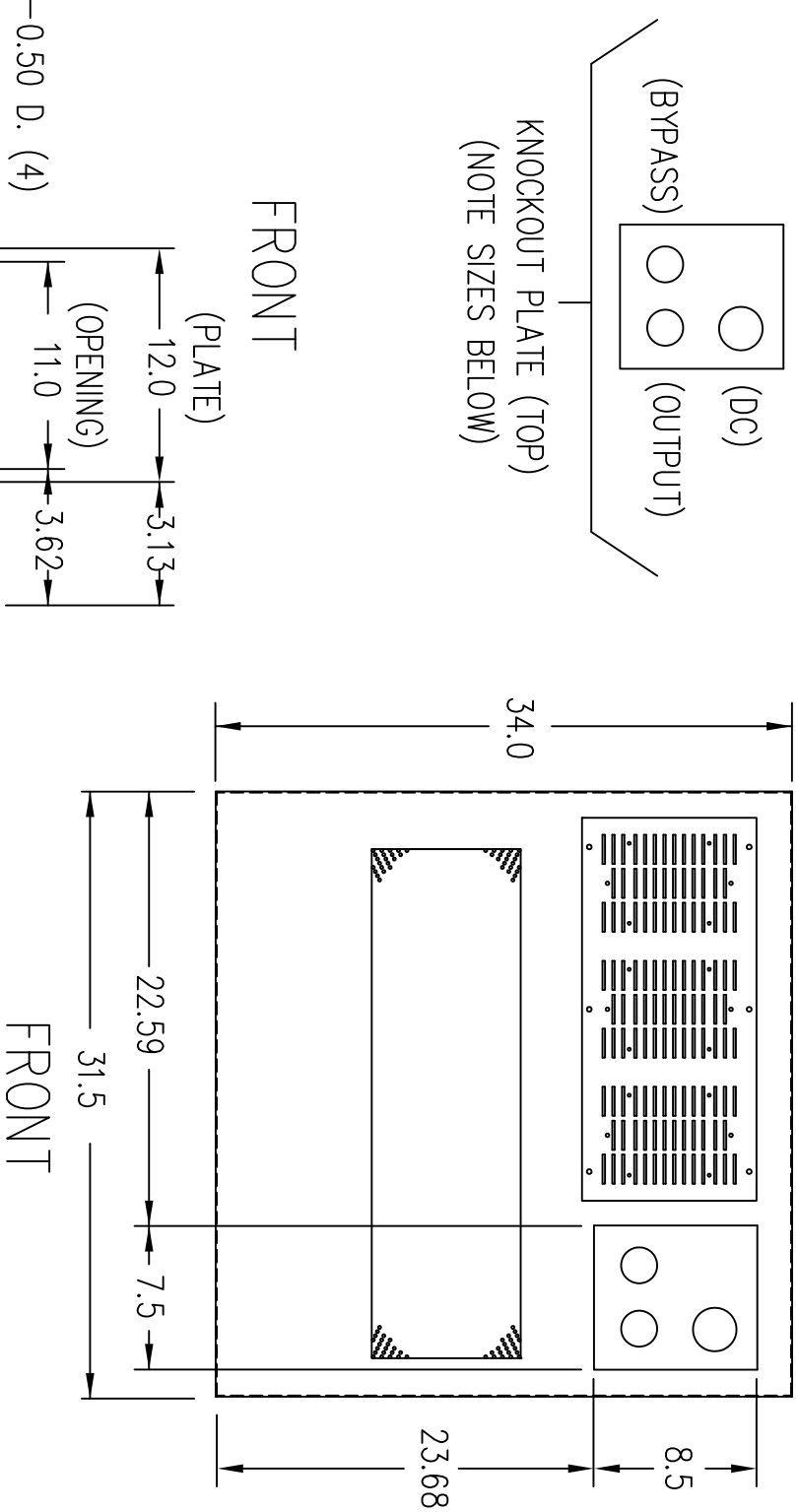
1S10H200_901BYP
214154

POWER SYSTEMS, INC.
ETW/CLD/483-2314

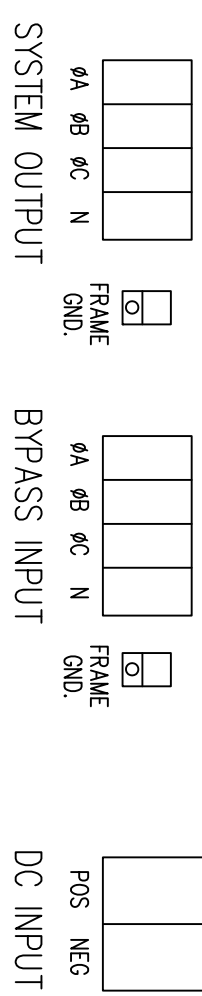
SHEET 1 OF 1

(VIEW FROM TOP OF CABINET)

RIGHT SIDE

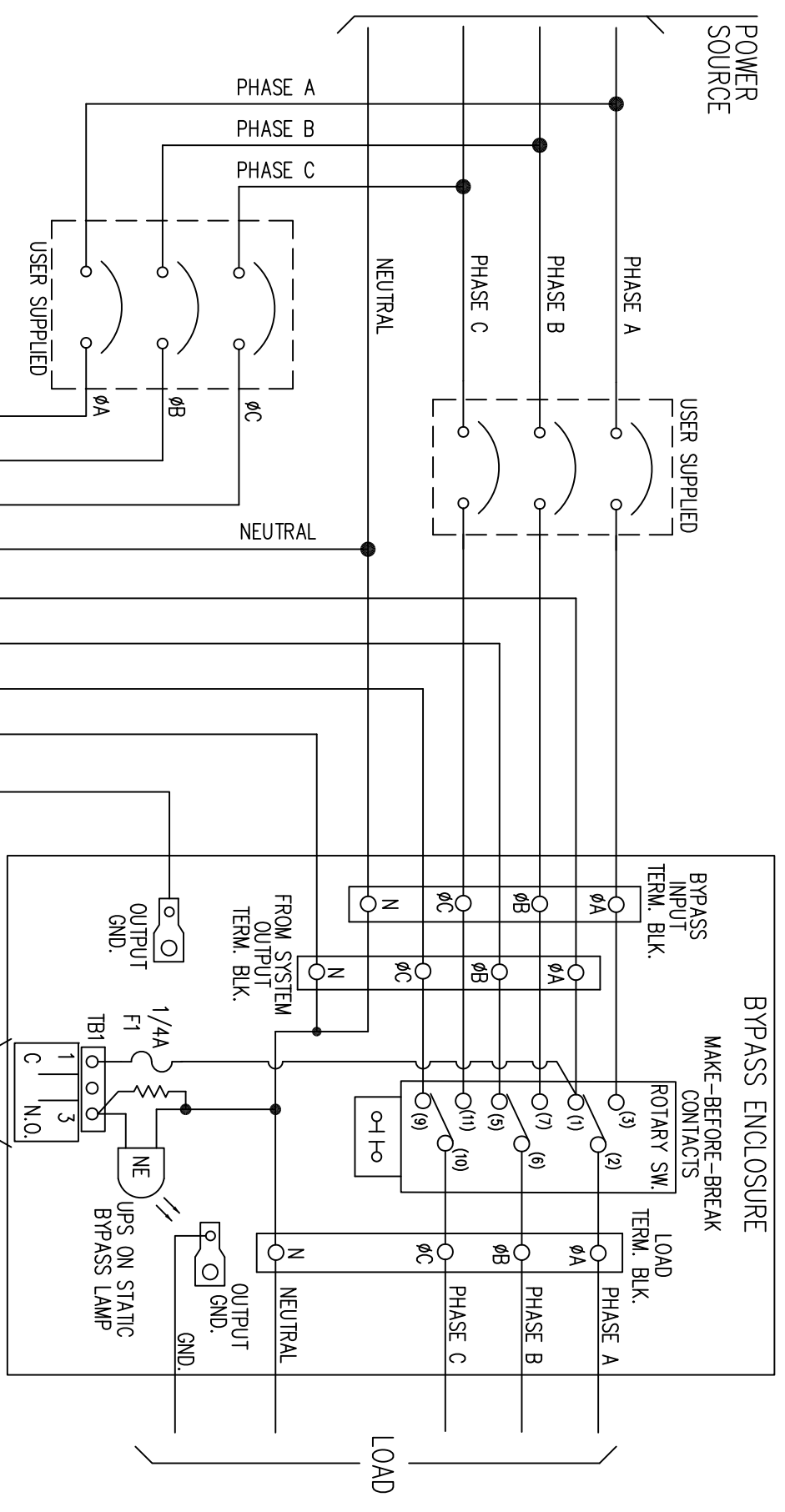
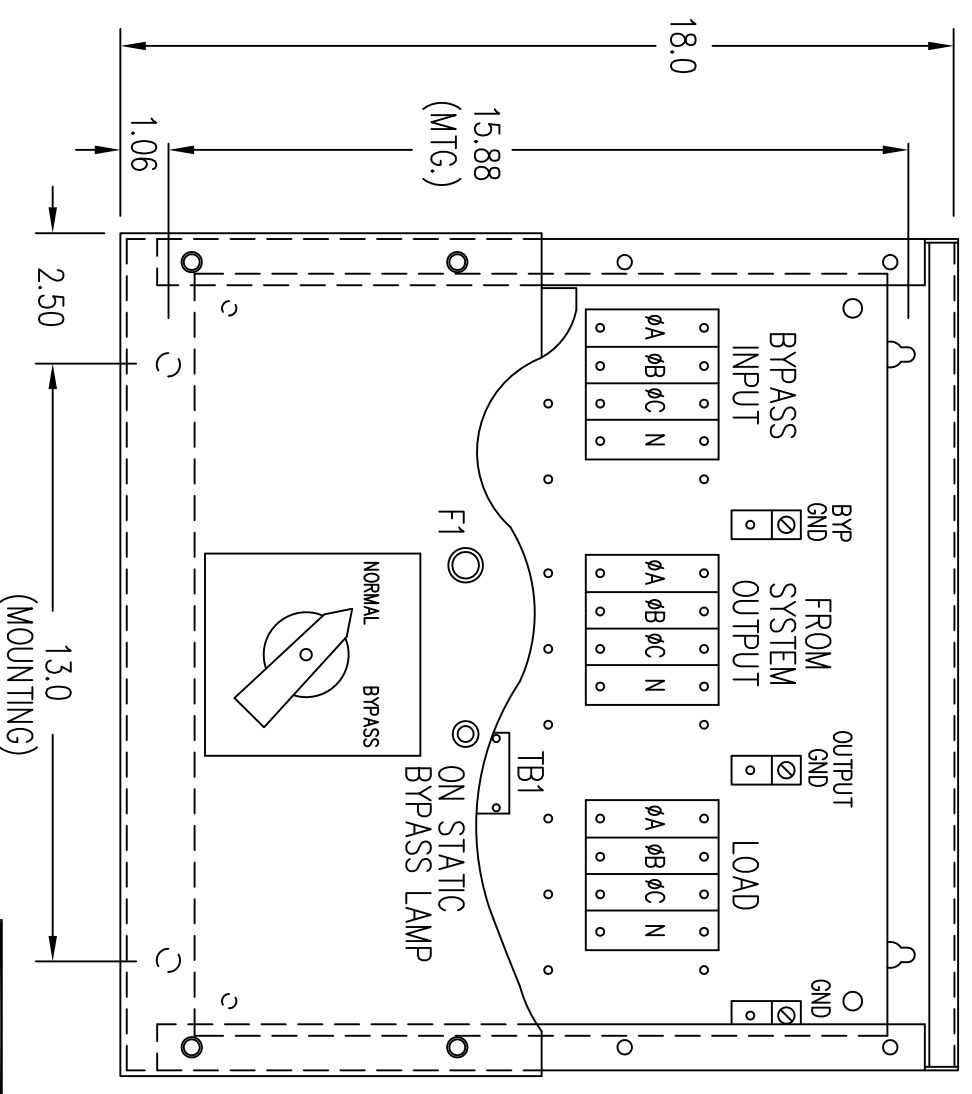
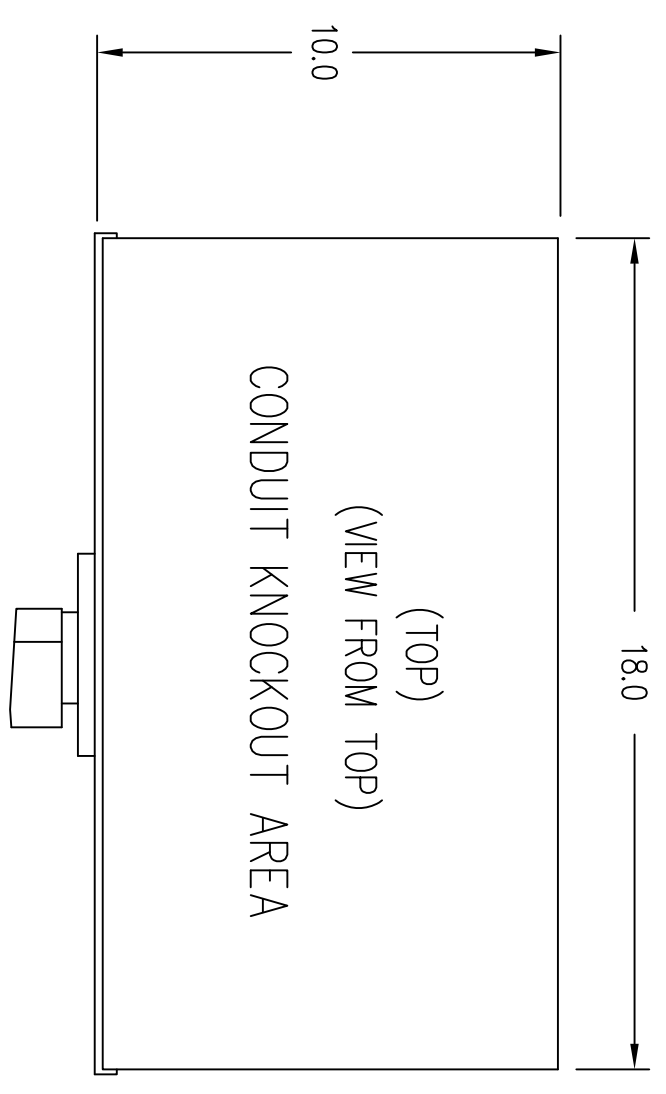


TERMINATION CONFIGURATION (BOTTOM, FRONT)
 TERMINAL BLOCK CAPACITY: 2/0 TO 14 GA.
 TERMINAL BLOCK CAPACITY (DC INPUT): 2/0 TO 14 GA.



NOTE: ALL DIMENSIONS ARE IN INCHES UNLESS OTHERWISE SPECIFIED.

(VIEW FROM BOTTOM OF CABINET)



TO UPS RELAY INTERFACE TERMINAL BLOCK
"ON BYPASS" COM AND "ON BYPASS" N.O.
NOTE: TERMINAL CAPACITY: 2/0 TO 14 AWG
TORQUE: 50 IN/LBS.
GROUND LUG CAPACITY: 1/0 TO 14 AWG
TORQUE: 50 IN/LBS.

NOTES:

1. OBSERVE ALL PHASING WHEN CONNECTING EXTERNAL SWITCH CONTACTS.
2. EXTERNAL ROTARY SWITCH ENCLOSURE: NEMA TYPE 1, 18"L x 18"W x 10"D.
3. DO NOT OPERATE THE ROTARY SWITCH TO BYPASS POSITION WITH THE "UPS" DE-ENERGIZED.
4. NORMAL- THE UPS SUPPLYING THE LOAD.
BYPASS- THE HARD BYPASS SOURCE SUPPLYING THE LOAD.
5. REMOVE BLANK COVER PANEL TO ACCESS TERMINAL CONNECTIONS.

MOUNTING HOLES LOCATED ON BOTTOM SURFACE OF ENCLOSURE AND ARE DESIGNED FOR 5/16 HARDWARE.

BYPASS ENCLOSURE
(FRONT-VIEW FROM FRONT)
(BLANK COVER PANEL REMOVED)

50A THREE PHASE OUTPUT PROPS SERIES EXTERNAL MAINTENANCE BYPASS SWITCH			
DESIGN	DATE		
DRAWN	DATE		
CHKD	DATE		
APPD	DATE		
REVISION	DATE		
SHEET 1 OF 1		ISSUE 2	
IC4232-901			