

Notes: Unless otherwise specified, dimensions are in inches. Dimensions within brackets [] are in millimeters.
 Recommended clearance for serviceability is 36" [914] in the front and 6" [152] on the remaining sides.

TO REMOVE FRONT FILTER, REMOVE TOP SCREW FROM EACH SIDE BRACKET. ROTATE BRACKETS AWAY FROM FILTER, THEN SLIDE FILTER UP AND REPLACE AS NECESSARY.

LTI Power Systems, Inc.

ProUPS B800 ENCLOSURE
10/15KVA INVERTER

10/15KVA WEIGHT W/SKID: 1300 LBS. (585 kg)

LTI-ProUPS

REV.
1

TEL. (440) 327-5050

10800 Middle Ave. Elyria, Ohio 44035

CAD DWG NAME: B800CAB_FILTER_10H20F

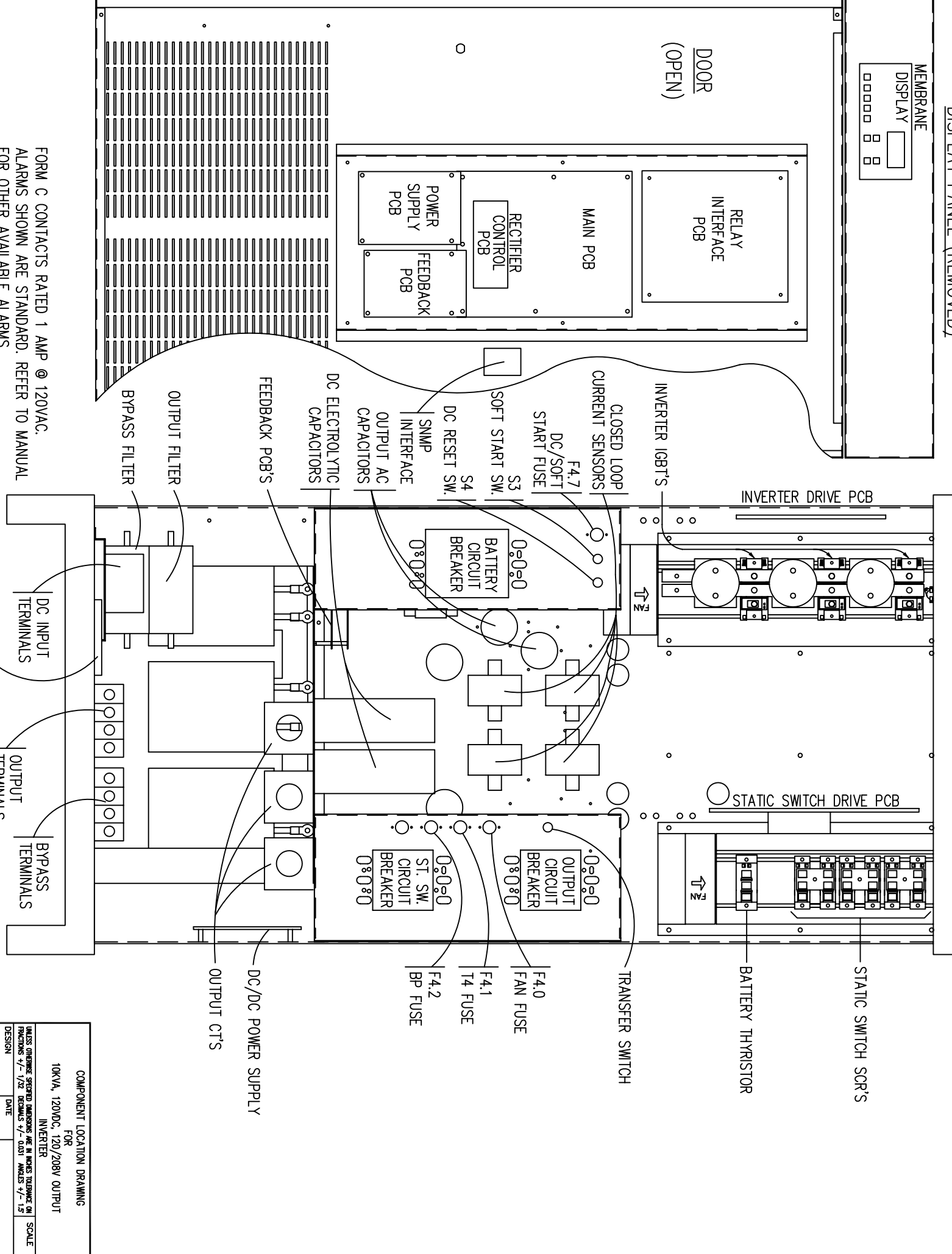
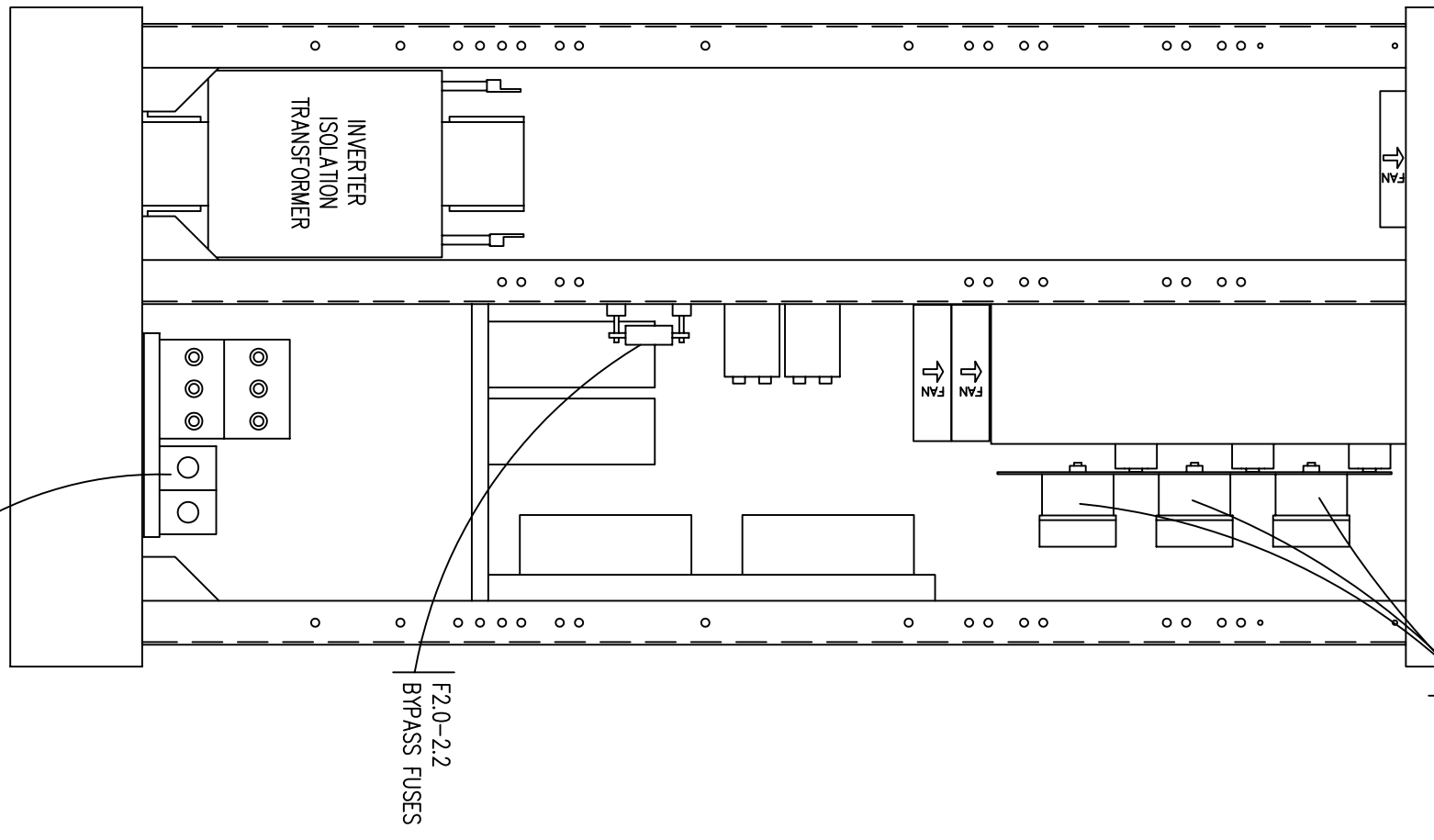
| REVISIONS | | | |
|-----------|---------|------|-------------|
| ISS. NO. | CHG. BY | DATE | DESCRIPTION |
| | | | |
| | | | |

DC FILM CAPACITORS
(3) PER INVERTER
HEAT SINKS

DISPLAY PANEL (REMOVED)

INVERTER HEAT SINK

STATIC SWITCH HEAT SINK



FORM C CONTACTS RATED 1 AMP @ 120VAC.
ALARMS SHOWN ARE STANDARD. REFER TO MANUAL FOR OTHER AVAILABLE ALARMS.

| | | | | | | | | | | | | | | | | |
|----|---|---|---|---|---|---|---|---|---|---|---|---|---|---|---|---|
| 1 | ○ | ○ | ○ | ○ | ○ | ○ | ○ | ○ | ○ | ○ | ○ | ○ | ○ | ○ | ○ | ○ |
| 2 | ○ | ○ | ○ | ○ | ○ | ○ | ○ | ○ | ○ | ○ | ○ | ○ | ○ | ○ | ○ | ○ |
| 3 | ○ | ○ | ○ | ○ | ○ | ○ | ○ | ○ | ○ | ○ | ○ | ○ | ○ | ○ | ○ | ○ |
| 4 | ○ | ○ | ○ | ○ | ○ | ○ | ○ | ○ | ○ | ○ | ○ | ○ | ○ | ○ | ○ | ○ |
| 5 | ○ | ○ | ○ | ○ | ○ | ○ | ○ | ○ | ○ | ○ | ○ | ○ | ○ | ○ | ○ | ○ |
| 6 | ○ | ○ | ○ | ○ | ○ | ○ | ○ | ○ | ○ | ○ | ○ | ○ | ○ | ○ | ○ | ○ |
| 7 | ○ | ○ | ○ | ○ | ○ | ○ | ○ | ○ | ○ | ○ | ○ | ○ | ○ | ○ | ○ | ○ |
| 8 | ○ | ○ | ○ | ○ | ○ | ○ | ○ | ○ | ○ | ○ | ○ | ○ | ○ | ○ | ○ | ○ |
| 9 | ○ | ○ | ○ | ○ | ○ | ○ | ○ | ○ | ○ | ○ | ○ | ○ | ○ | ○ | ○ | ○ |
| 10 | ○ | ○ | ○ | ○ | ○ | ○ | ○ | ○ | ○ | ○ | ○ | ○ | ○ | ○ | ○ | ○ |
| 11 | ○ | ○ | ○ | ○ | ○ | ○ | ○ | ○ | ○ | ○ | ○ | ○ | ○ | ○ | ○ | ○ |
| 12 | ○ | ○ | ○ | ○ | ○ | ○ | ○ | ○ | ○ | ○ | ○ | ○ | ○ | ○ | ○ | ○ |
| 13 | ○ | ○ | ○ | ○ | ○ | ○ | ○ | ○ | ○ | ○ | ○ | ○ | ○ | ○ | ○ | ○ |
| 14 | ○ | ○ | ○ | ○ | ○ | ○ | ○ | ○ | ○ | ○ | ○ | ○ | ○ | ○ | ○ | ○ |
| 15 | ○ | ○ | ○ | ○ | ○ | ○ | ○ | ○ | ○ | ○ | ○ | ○ | ○ | ○ | ○ | ○ |

ON MANS BATTERY ON SUMMARY

BYPASS LOW BATTERY LOW BATTERY ALARM

FRONT

COMPONENT LOCATION DRAWING FOR 10KVA, 120VDC, 120/208V OUTPUT INVERTER

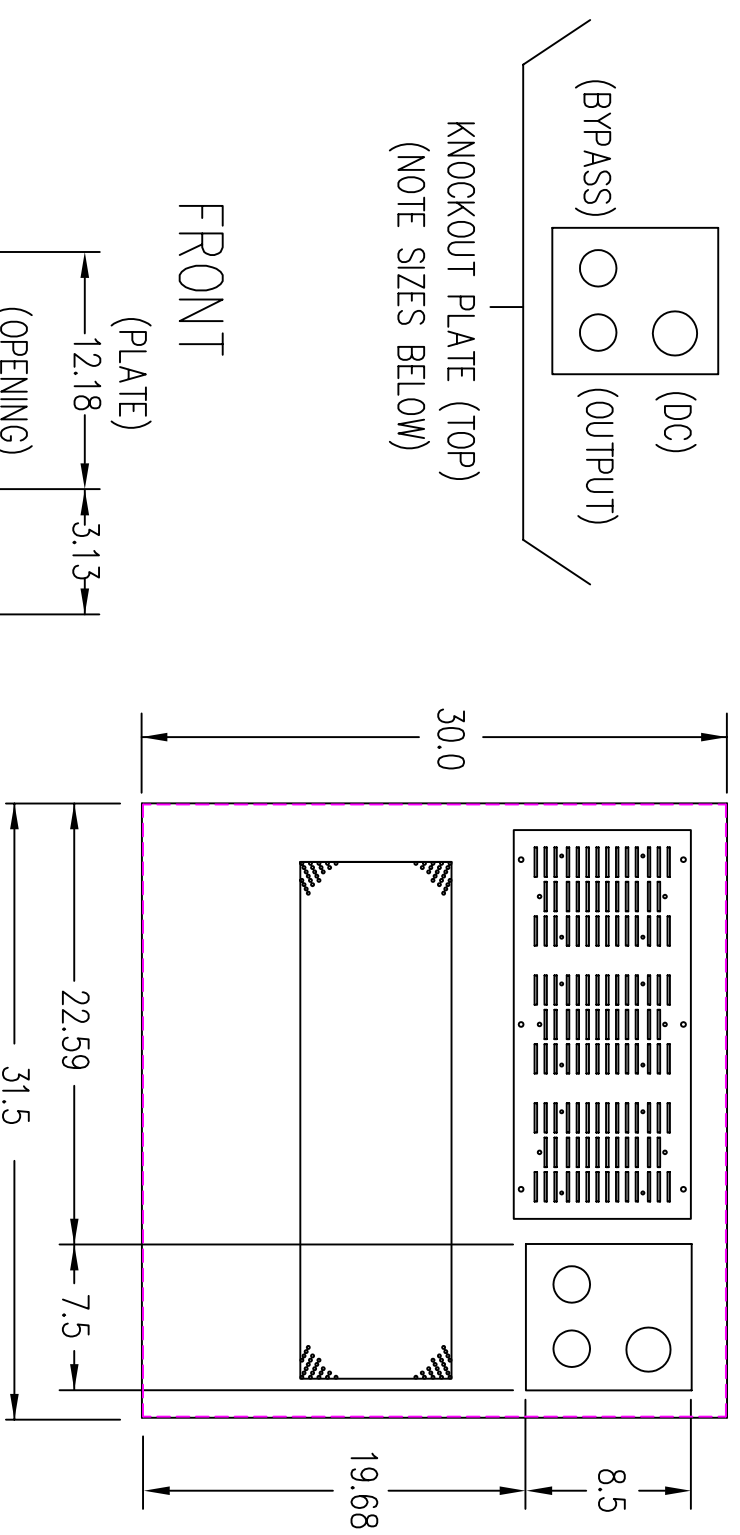
UNLESS OTHERWISE SPECIFIED DIMENSIONS ARE IN INCHES TOLERANCE ON FRACTIONS +/- 1/32 DECIMALS +/- 0.001 ANGLES +/- 1.5° SCALE

| DESIGN | DATE |
|---------|--------|
| | |
| DRAWN | DATE |
| WALLACE | 3-8-11 |
| CHKD | DATE |
| | |
| APPD | DATE |
| | |

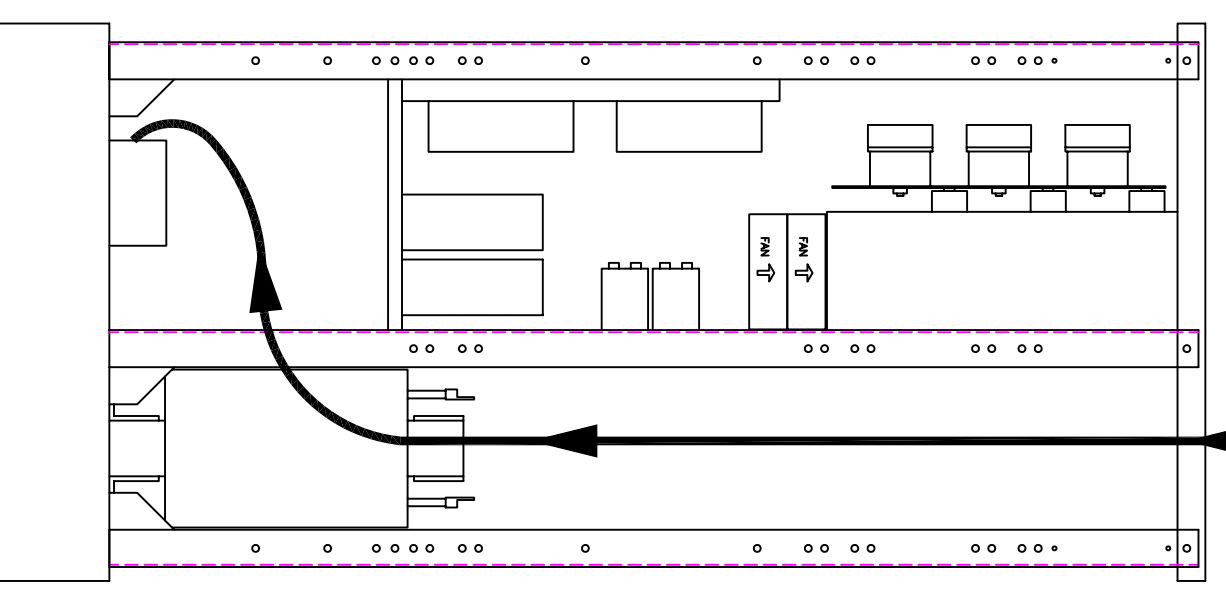
LTI
POWER SYSTEMS, INC.
ELYRIA, OHIO 44035-7822

10H20F
SHEET 1 OF 1
ISSUE 1

(VIEW FROM TOP OF CABINET)



RIGHT SIDE

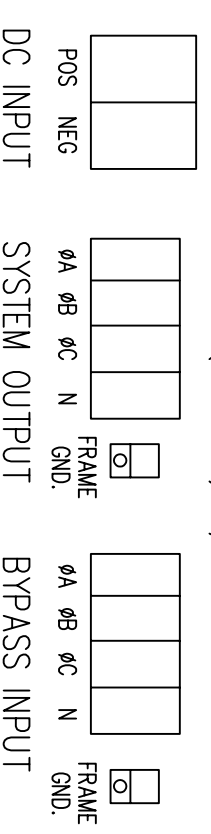


FOR TOP CABLE ENTRY, ROUTE WIRES DOWN RIGHT SIDE THROUGH OPEN AREA OF UPRIGHT CENTER PANEL TO TERMINALS LOCATED ON BASE PANEL.

TERMINATION CONFIGURATION (BOTTOM, FRONT)

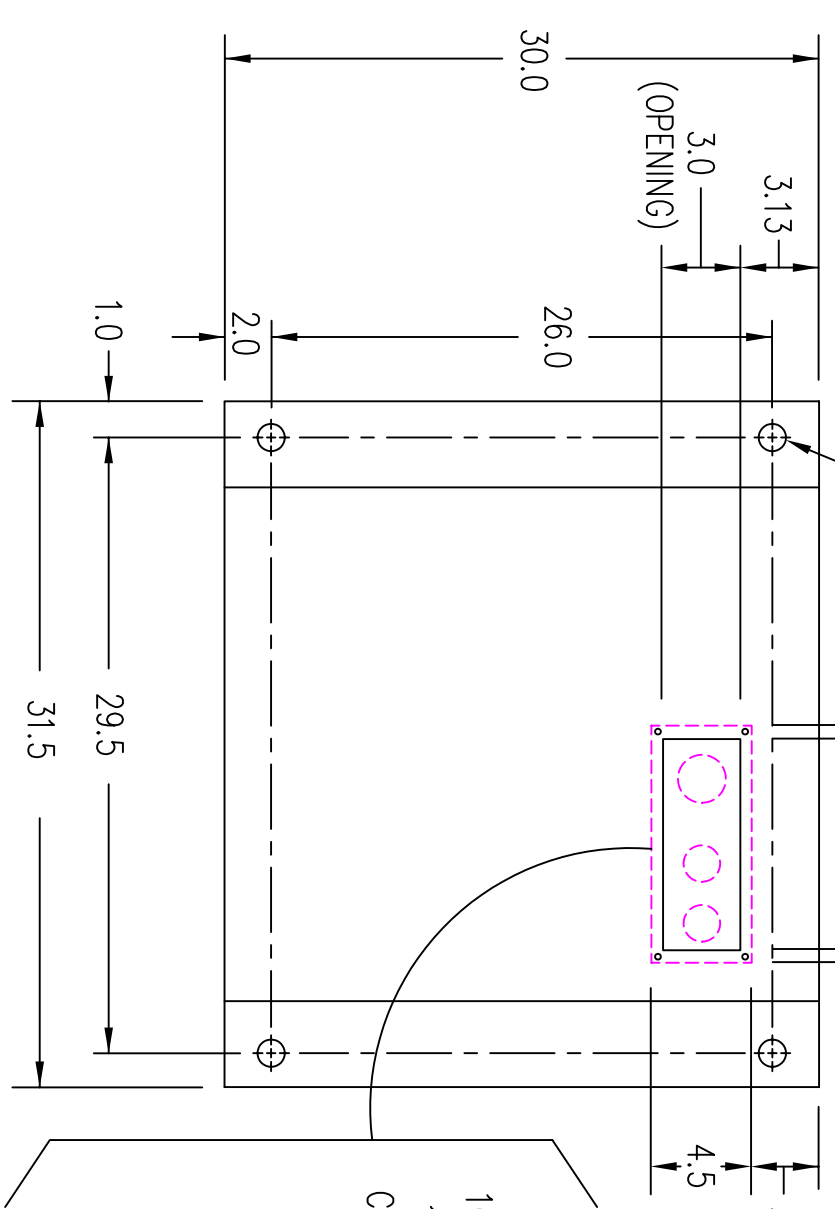
TERMINAL BLOCK CAPACITY (BYP. INPUT/AC OUTPUT): 2/0 TO 14 GA.

TERMINAL BLOCK CAPACITY (DC INPUT): 2/0 TO 14 GA.



NOTE: ALL DIMENSIONS ARE IN INCHES UNLESS OTHERWISE SPECIFIED.

(VIEW FROM BOTTOM OF CABINET)



FRONT (PLATE) (OPENING)

FRONT

LTI Power Systems, Inc.

TEL. (440) 327-5050

10800 Middle Ave. Bldg. B Elyria, Ohio 44035

10KVA INVERTER ASSEMBLY

SHEET 1 OF 1

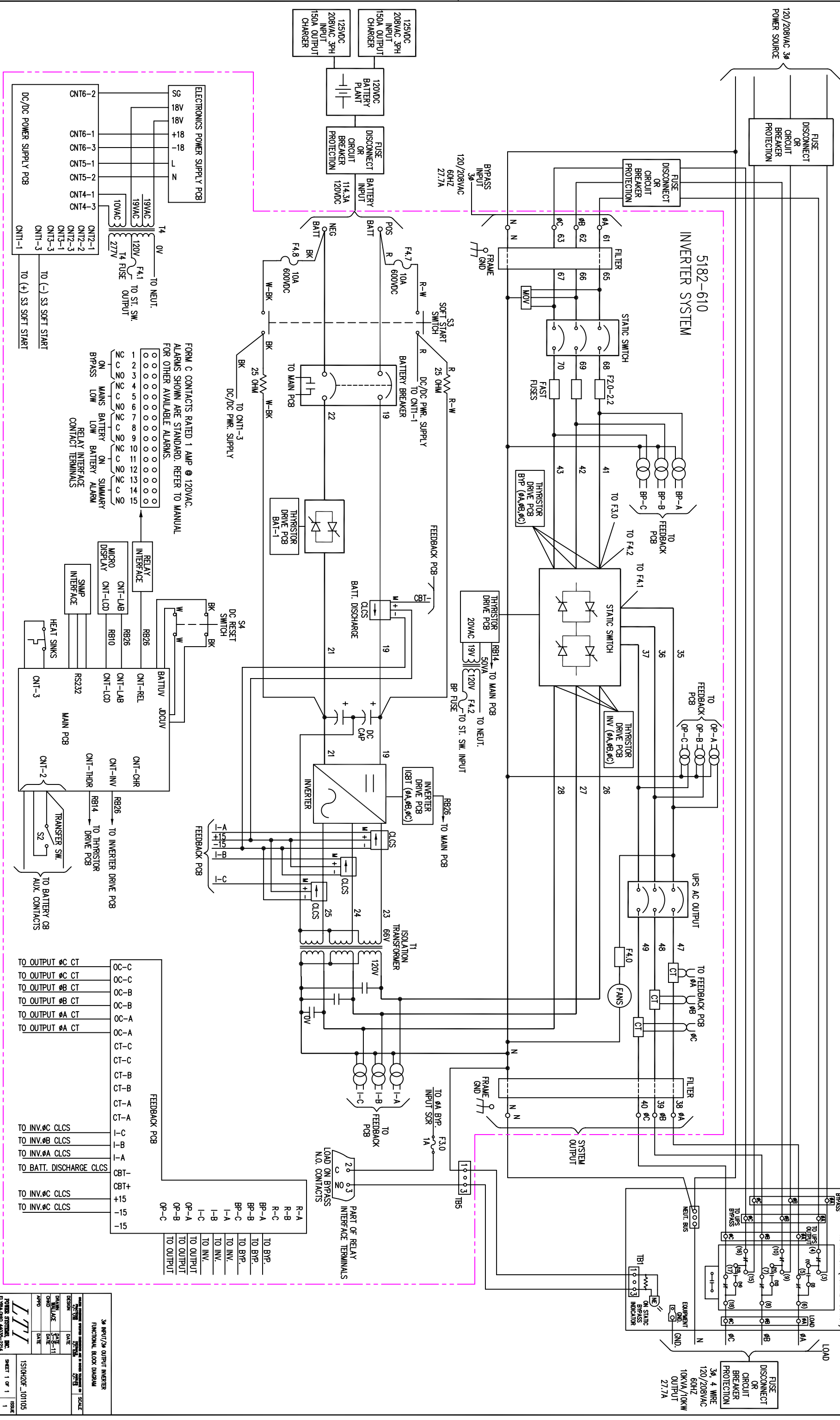
LTI-ProUPS

CAD DWG NAME: 10H20F_BASE

REV. 1

| BYPASS INPUT/AC OUTPUT | MAX CURRENT | OKT. BRKR. RATING | A.I.C. RATING | TERM. CAPACITY | TORQUE | RECM. SIZE | RECM. FUSING | RECM. GRD. SIZE | RECM. CONDUIT |
|------------------------|--------------|-------------------|---------------|----------------|--|------------|--------------|-----------------|---------------|
| 120/208V | 27.7A | 40A | 25,000 | 14-2/0 AWG | 50 IN/LBS | 8 AWG | 50A | 8 AWG | 3/4" |
| DC INPUT | MAX. CURRENT | OKT. BRKR. RATING | A.I.C. RATING | TERM. CAPACITY | TORQUE <td>RECM. SIZE</td> <td>RECM. FUSING</td> <td>RECM. GRD. SIZE</td> <td>RECM. CONDUIT</td> | RECM. SIZE | RECM. FUSING | RECM. GRD. SIZE | RECM. CONDUIT |
| 120V | 114.3A | 125A | 35,000 | 14-2/0 AWG | 50 IN/LBS | 1 AWG | 150A | 6 AWG | 1-1/4" |

- NOTES:
1. WIRE SIZES BASED ON 90°C COPPER CONDUCTORS OPERATING IN 30°C AMBIENT AND NEC TABLES 250-95 AND 310-16. INCREASE CONDUCTOR SIZE FOR LONG RUNS.
 2. CLOCKWISE PHASE ROTATION MUST BE OBSERVED FOR BYPASS INPUT.
 3. CLCS = CLOSED LOOP CURRENT SENSOR



FORM C CONTACTS RATED 1 AMP @ 120VAC.
ALARMS SHOWN ARE STANDARD. REFER TO MANUAL FOR OTHER AVAILABLE ALARMS.

