

Notes: Unless otherwise specified, dimensions are in inches. Dimensions within brackets [] are in millimeters.
 Recommended clearance for serviceability is 36" [914] in the front and 6" [152] on the remaining sides.

TO REMOVE FRONT FILTER, REMOVE TOP SCREW FROM EACH SIDE BRACKET. ROTATE BRACKETS AWAY FROM FILTER, THEN SLIDE FILTER UP AND REPLACE AS NECESSARY.

LTI Power Systems, Inc.

ProUPS B800 ENCLOSURE
20KVA INVERTER

20KVA WEIGHT W/SKID: 1330 LBS. (599 kg)

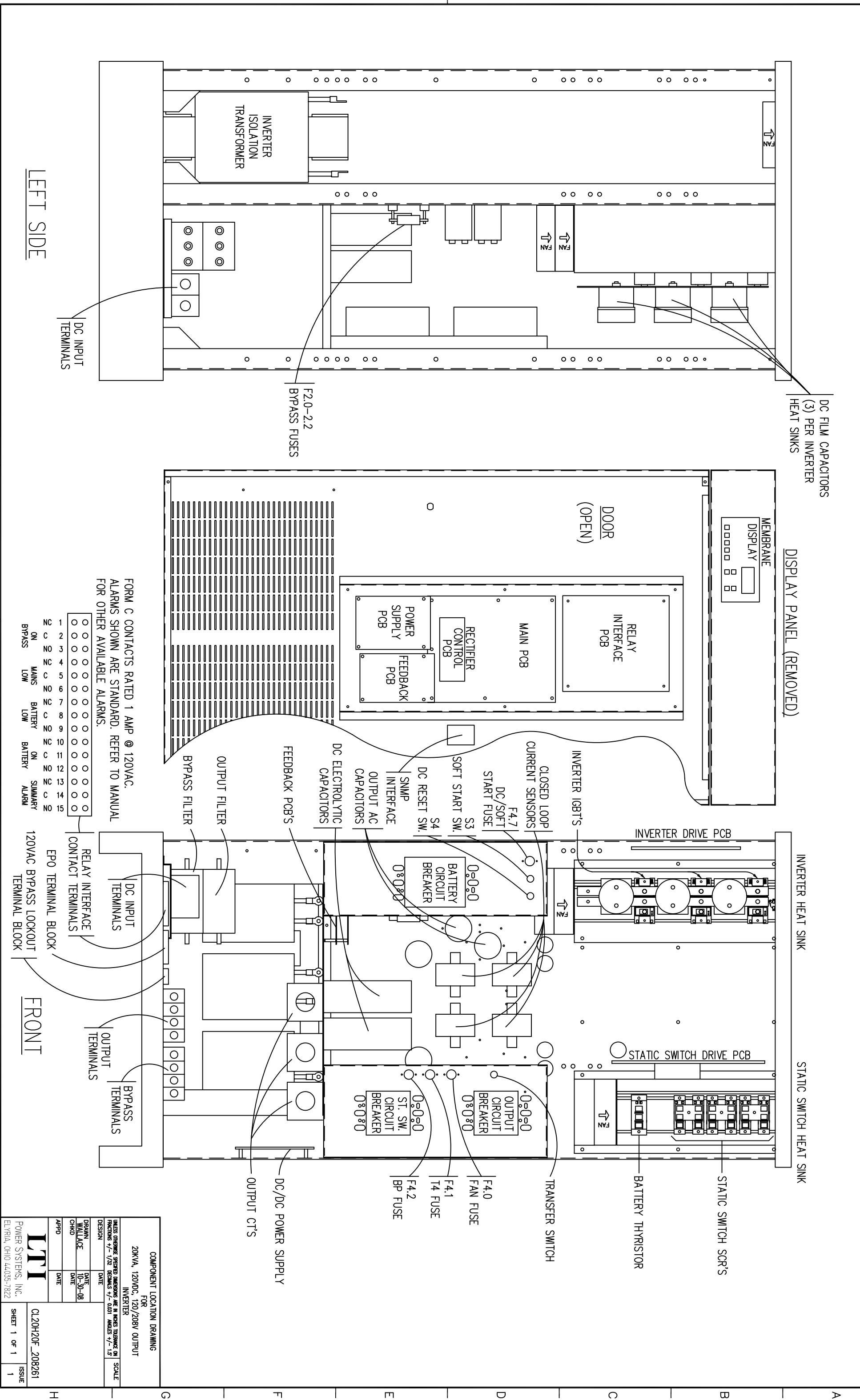
LTI-ProUPS

REV.
1

TEL. (440) 327-5050

10800 Middle Ave. Elyria, Ohio 44035

CAD DWG NAME: B800CAB_FILTER_20H20F



FORM C CONTACTS RATED 1 AMP @ 120VAC.
ALARMS SHOWN ARE STANDARD. REFER TO MANUAL
FOR OTHER AVAILABLE ALARMS.

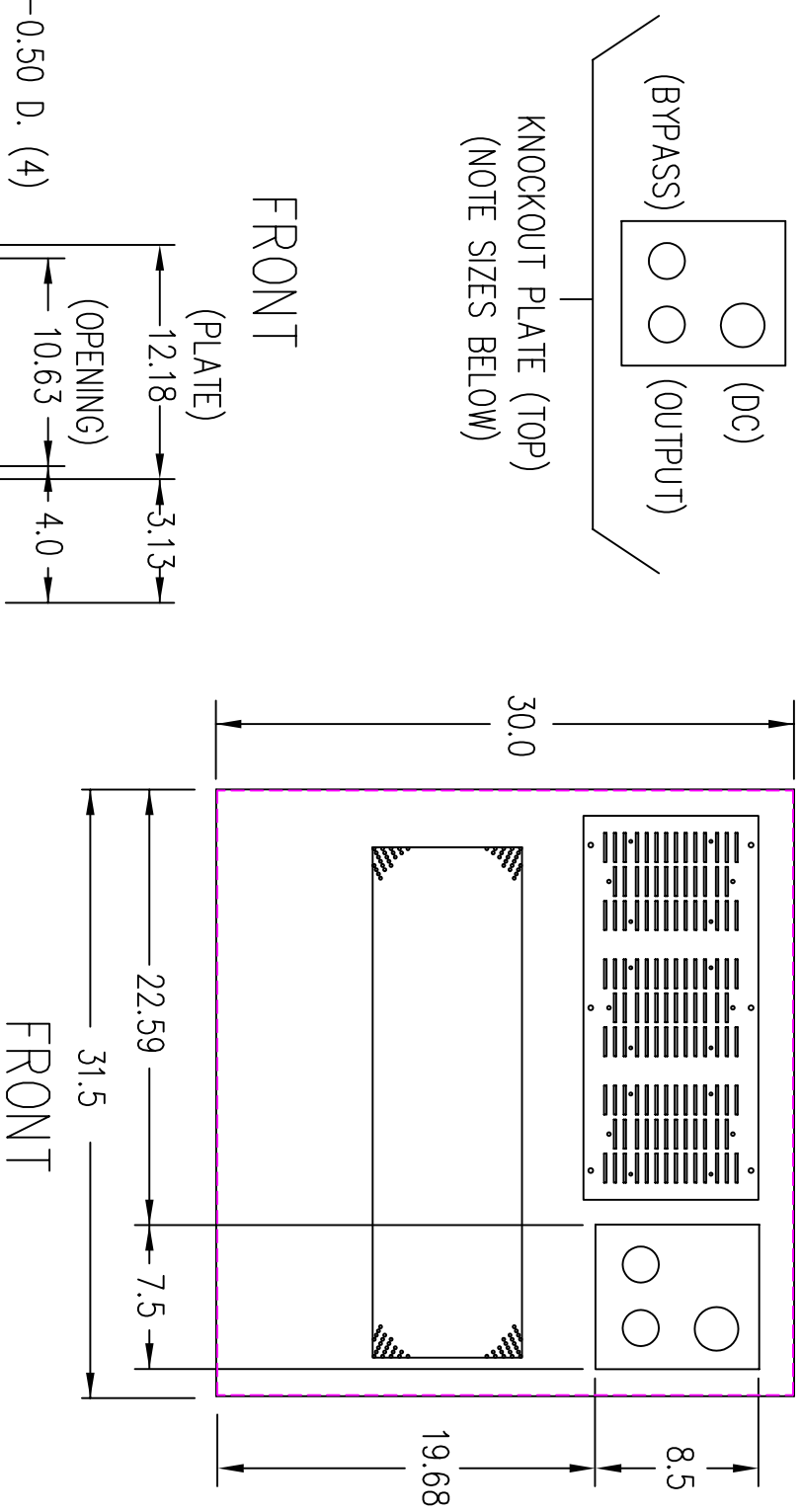
1	2	3	4	5	6	7	8	9	10	11	12	13	14	15
<input type="checkbox"/>	<input type="checkbox"/>	<input type="checkbox"/>	<input type="checkbox"/>	<input type="checkbox"/>	<input type="checkbox"/>	<input type="checkbox"/>	<input type="checkbox"/>	<input type="checkbox"/>	<input type="checkbox"/>	<input type="checkbox"/>	<input type="checkbox"/>	<input type="checkbox"/>	<input type="checkbox"/>	<input type="checkbox"/>
ON	ON	ON	ON	ON	ON	ON	ON	ON	ON	ON	ON	ON	ON	ON
BYPASS	MAINS	BATTERY	LOW	BATTERY	ON	BATTERY	LOW	BATTERY	ON	BATTERY	LOW	ALARM	SUMMARY	ALARM

LEFT SIDE

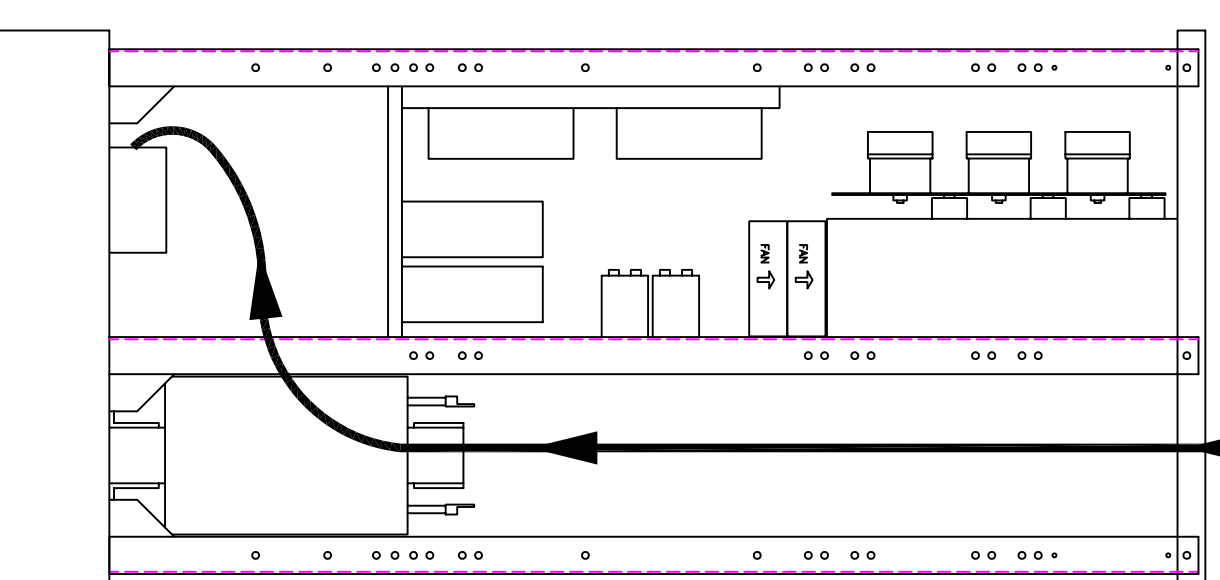
FRONT

COMPONENT LOCATION DRAWING	
FOR 20KVA, 120VAC, 120/208V OUTPUT INVERTER	
UNLESS OTHERWISE SPECIFIED DIMENSIONS ARE IN INCHES TOLERANCE ON FRACTIONS +/-.1/32 DECIMALS +/-.0031 ANGLES +/-.15° SCALE	
DESIGN DATE	
DRAWN WALLACE DATE 10-30-08	
CHKD DATE	
APPD DATE	
POWER SYSTEMS, INC.	CL20H20F_208261
ELYRIA, OHIO 44035-7822	SHEET 1 OF 1
	1

(VIEW FROM TOP OF CABINET)



RIGHT SIDE

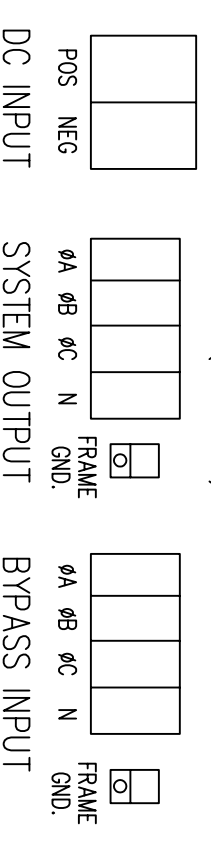


FOR TOP CABLE ENTRY, ROUTE WIRES DOWN RIGHT SIDE THROUGH OPEN AREA OF UPRIGHT CENTER PANEL TO TERMINALS LOCATED ON BASE PANEL.

TERMINATION CONFIGURATION (BOTTOM, FRONT)

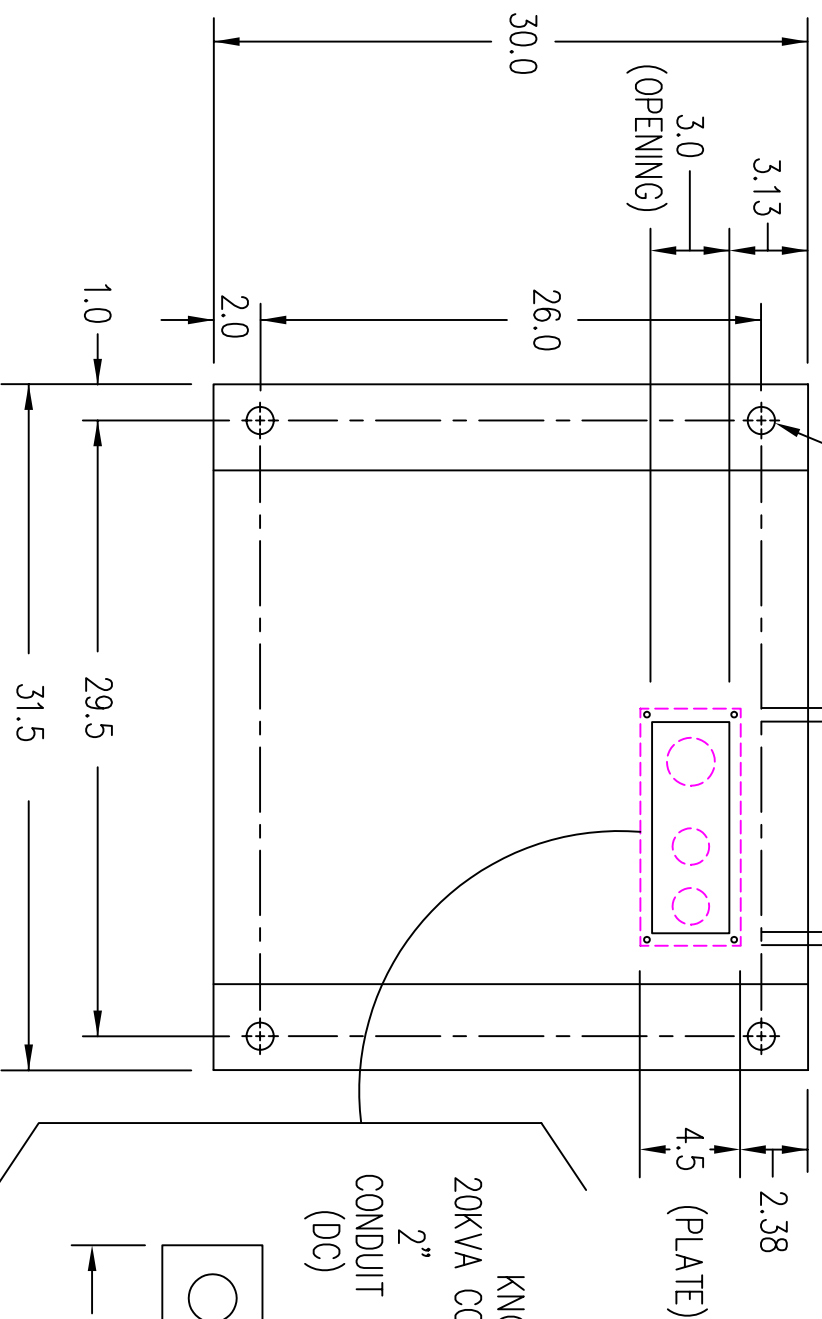
TERMINAL BLOCK CAPACITY (BYP. INPUT/AC OUTPUT): 2/0 TO 14 GA.

TERMINAL BLOCK CAPACITY (DC INPUT): 500 MCM TO 4 GA.



NOTE: ALL DIMENSIONS ARE IN INCHES UNLESS OTHERWISE SPECIFIED.

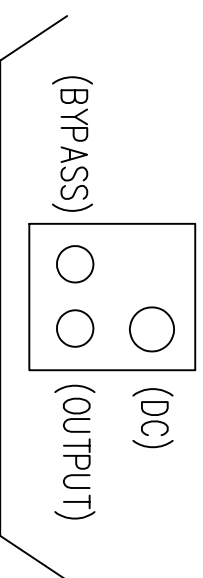
(VIEW FROM BOTTOM OF CABINET)



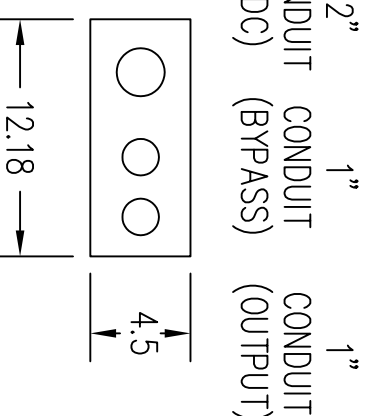
FRONT

FRONT

KNOCKOUT PLATE (TOP)
(NOTE SIZES BELOW)



KNOCKOUT PLATE
20KVA CONFIGURATION (120/208V)



LTI Power Systems, Inc.

20KVA INVERTER ASSEMBLY

TEL. (440) 327-5050

10800 Middle Ave. Bldg. B Elyria, Ohio 44035

SHEET 1 OF 1

LTI-ProUPS

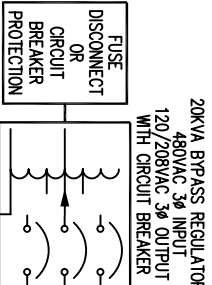
CAD DWG NAME: 20H20F_BASE

REV.

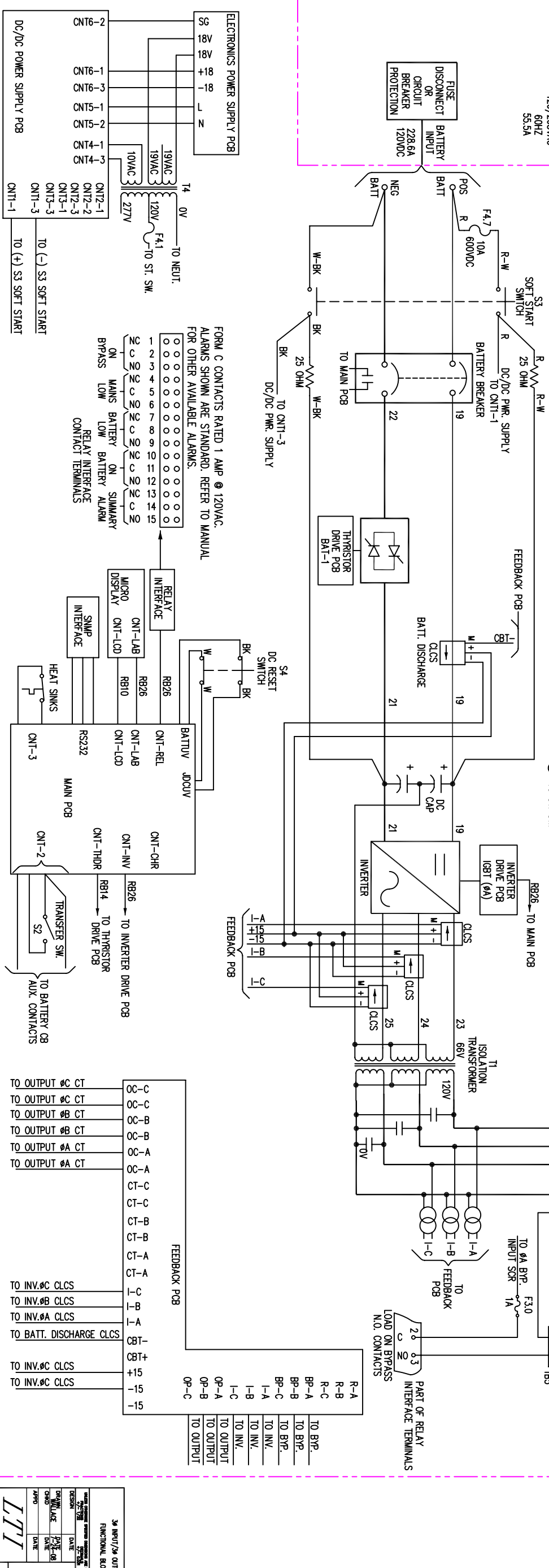
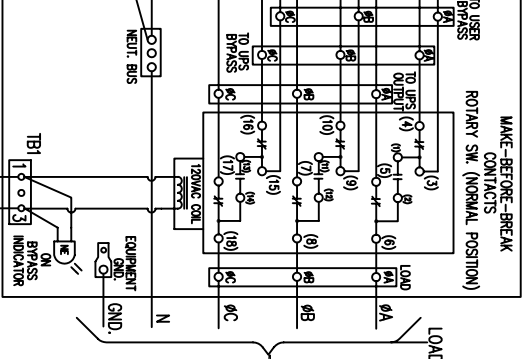
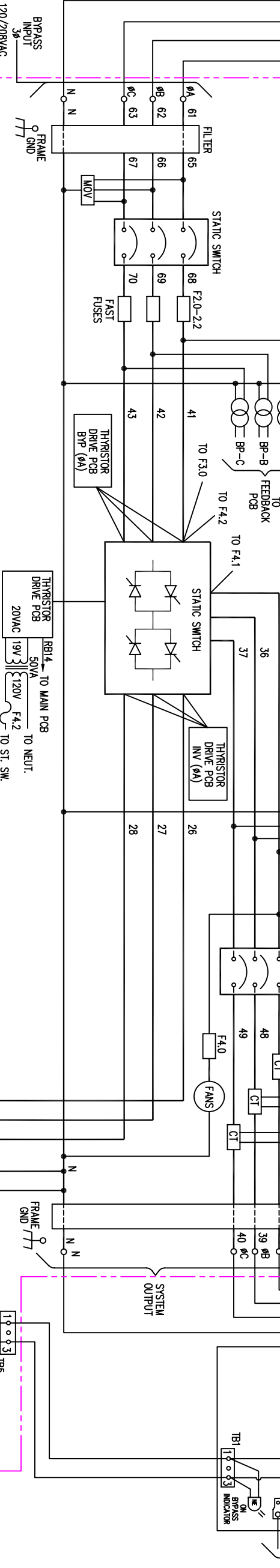
1

BYPASS INPUT/AC OUTPUT	MAX. CURRENT	BRKR. RATING	A.I.C. RATING	TERM. CAPACITY	TORQUE	RECM. SIZE	RECM. FUSING	RECM. GRD. SIZE	RECM. CONDUIT
120/208V	55.5A	70A	25,000	14-2/0 AWG	50 IN/LBS	4 AWG	80A	8 AWG	1"
DC INPUT	MAX. CURRENT	BRKR. RATING	A.I.C. RATING	TERM. CAPACITY	TORQUE <td>RECM. SIZE</td> <td>RECM. FUSING</td> <td>RECM. GRD. SIZE</td> <td>RECM. CONDUIT</td>	RECM. SIZE	RECM. FUSING	RECM. GRD. SIZE	RECM. CONDUIT
120V	228.6A	280A	35,000	500MCM - 4 AWG	275 IN/LBS	300 MCM	300A	2 AWG	2"

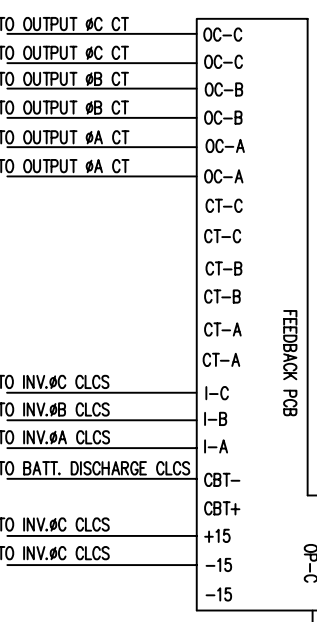
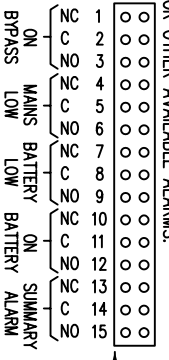
- NOTES:
1. WIRE SIZES BASED ON 90°C COPPER CONDUCTORS OPERATING IN 30°C AMBIENT AND NEC TABLES 250-95 AND 310-16. INCREASE CONDUCTOR SIZE FOR LONG RUNS.
 2. CLOCKWISE PHASE ROTATION MUST BE OBSERVED FOR BYPASS INPUT.
 3. CLCS = CLOSED LOOP CURRENT SENSOR



5182-620 INVERTER SYSTEM



FORM C CONTACTS RATED 1 AMP @ 120VAC. ALARMS SHOWN ARE STANDARD. REFER TO MANUAL FOR OTHER AVAILABLE ALARMS.



3φ INPUT/3φ OUTPUT INVERTER
FUNCTIONAL BLOCK DIAGRAM

DESIGN: [] DATE: []
CHECKED: [] DATE: []
DRAWN: [] DATE: []
APPD: []

1520N20F
SHEET 1 OF 1
ISSUE 3