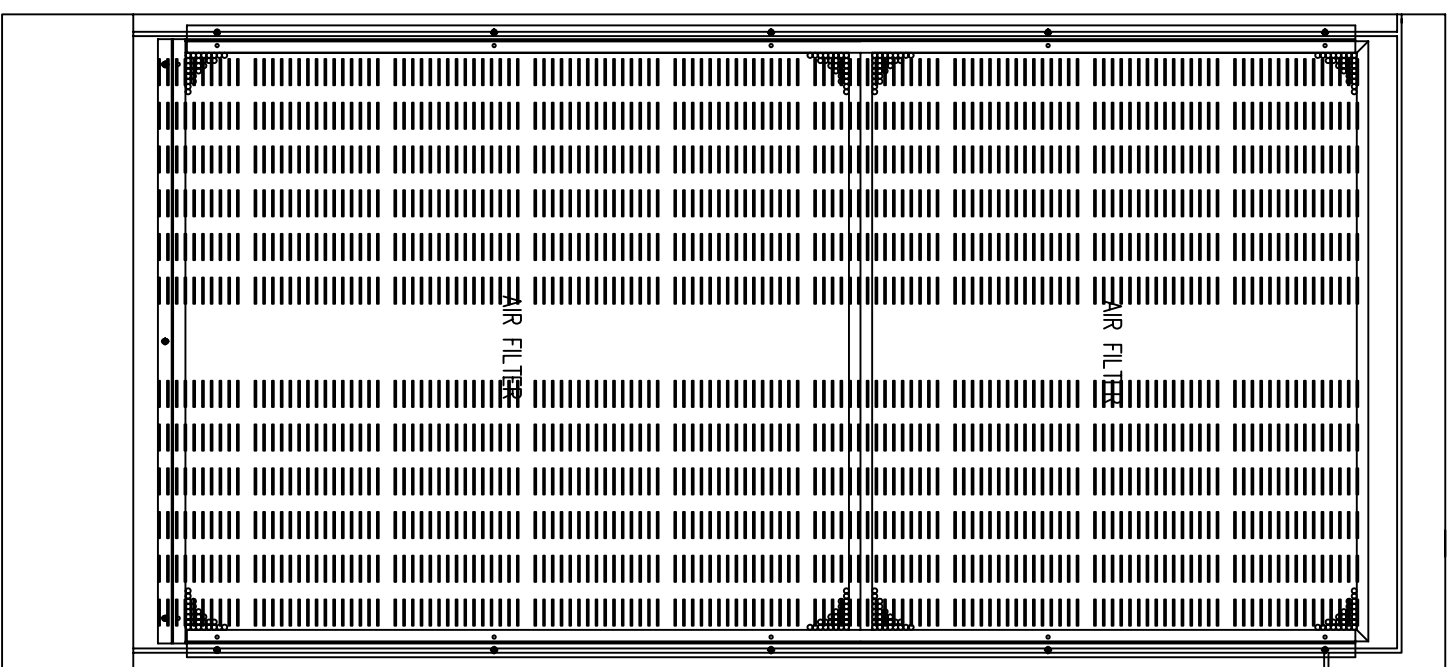


FRONT
ACCESSIBLE
AIR FILTER

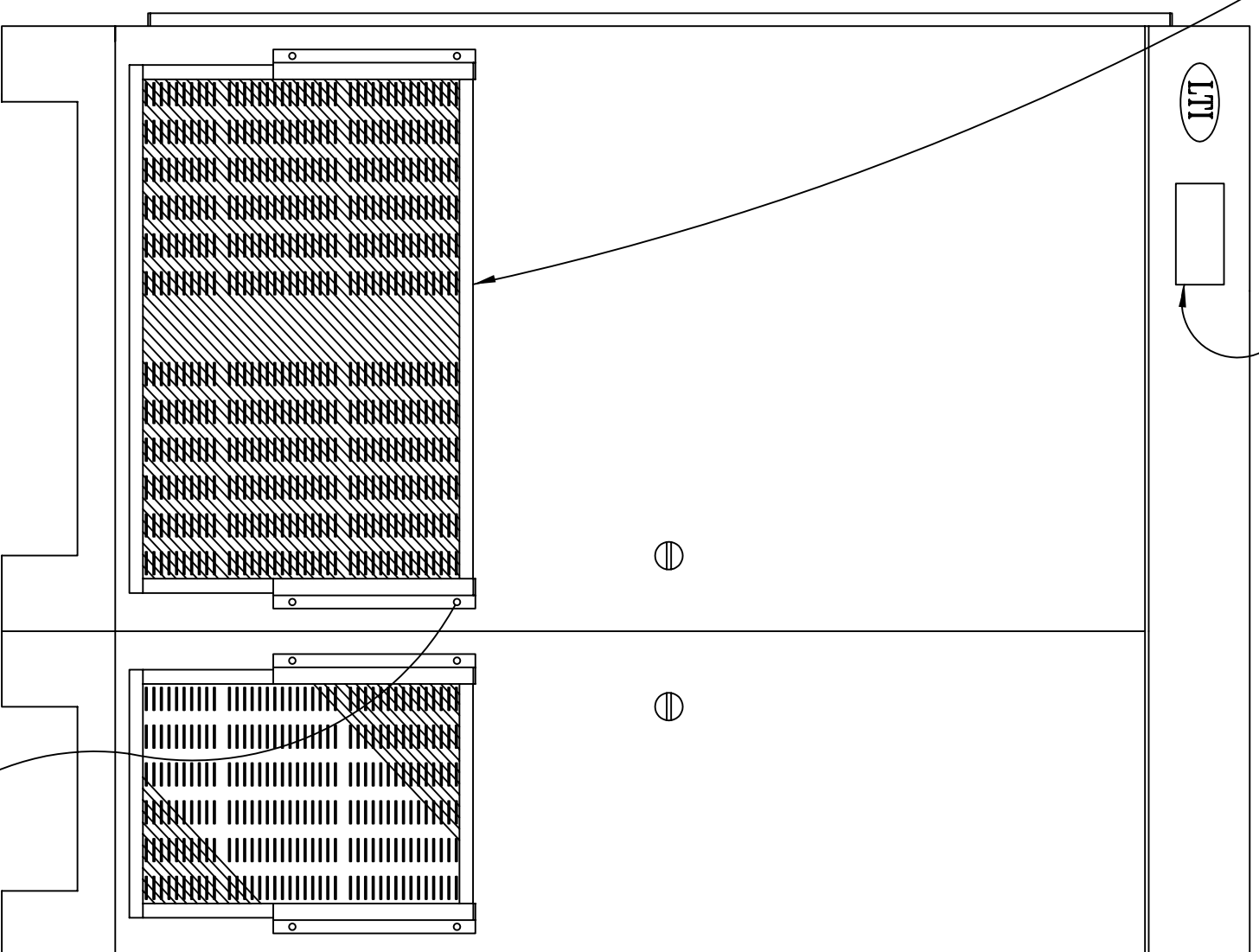
[1250] 49.25
[800] 31.5
STANDARD DISPLAY
[450]
17.75

[762]
30.0

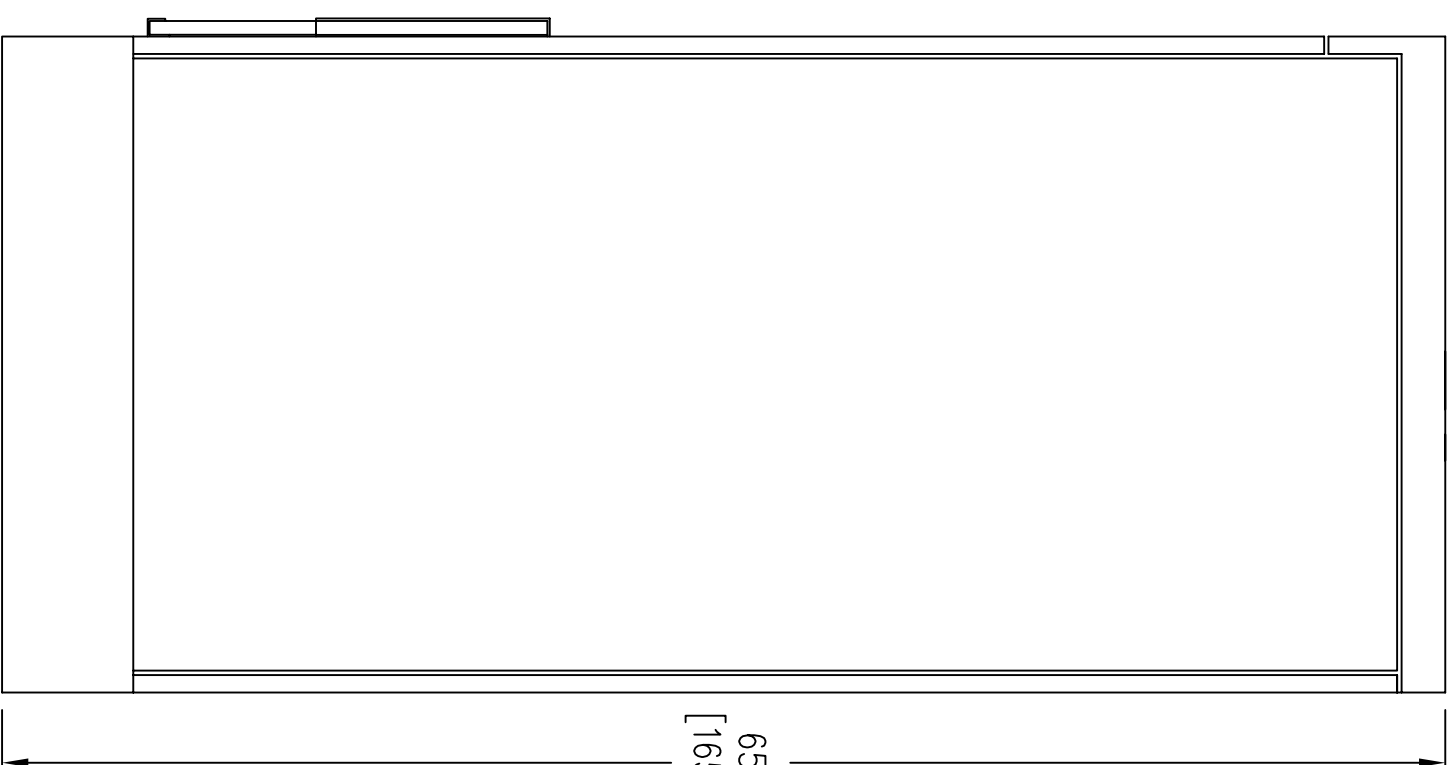
65.0
[1650]



LEFT



FRONT



RIGHT

Notes: Unless otherwise specified, dimensions are in inches. Dimensions within brackets [] are in millimeters.
Recommended clearance for serviceability is 36" [914] in the front and 6" [152] on the remaining sides.

TO REMOVE FRONT FILTER, REMOVE TOP SCREW FROM EACH SIDE BRACKET. ROTATE BRACKETS AWAY FROM FILTER, THEN SLIDE FILTER UP AND REPLACE AS NECESSARY.

LTI Power Systems, Inc.

ProUPS B1250 ENCLOSURE
30KVA

30KVA WEIGHT W/SKID: 1000 LBS. (771 kg)

LTI-ProUPS

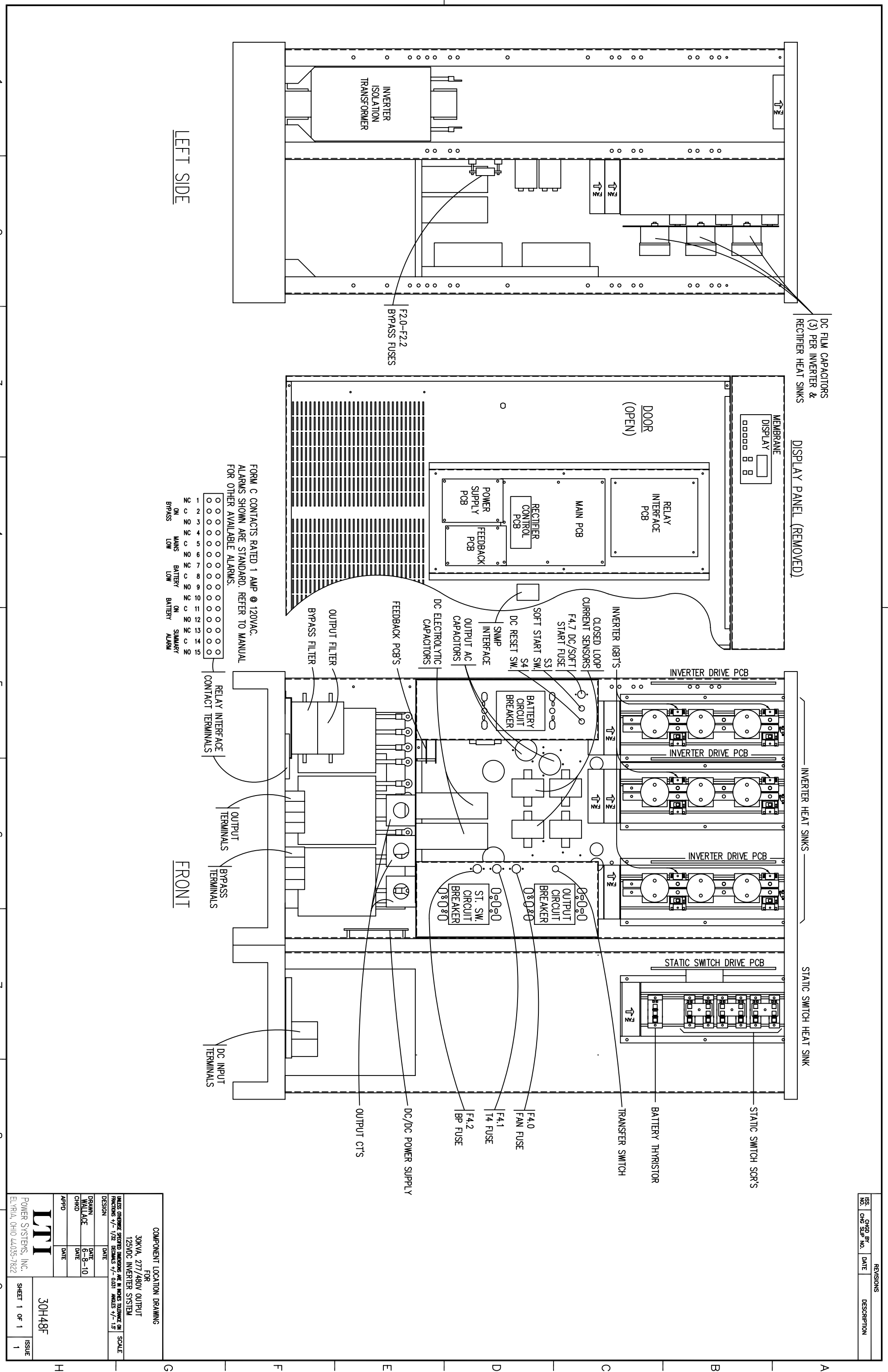
REV.
1

TEL. (440) 327-5050

10800 Middle Ave. Elyria, Ohio 44035

CAD DWG NAME: B1250CAB_30KVA_INV

REV.	CHG. BY	DATE	DESCRIPTION



LEFT SIDE

FRONT

FORM C CONTACTS RATED 1 AMP @ 120VAC.
ALARMS SHOWN ARE STANDARD. REFER TO MANUAL FOR OTHER AVAILABLE ALARMS.

1	2	3	4	5	6	7	8	9	10	11	12	13	14	15	16	17	18	19	20
O	O	O	O	O	O	O	O	O	O	O	O	O	O	O	O	O	O	O	O
X	X	X	X	X	X	X	X	X	X	X	X	X	X	X	X	X	X	X	X

COMPONENT LOCATION DRAWING

FOR	30kVA, 277/480V OUTPUT
125VDC INVERTER SYSTEM	
UNLESS OTHERWISE SPECIFIED DIMENSIONS ARE IN MILLIMETERS. DIMENSIONS IN SCALE FRACTIONS +/- 1/32 DECIMALS +/- 0.031 ANGLES +/- 1.5	
DESIGN	DATE
DRAWN	DATE
WALLACE	6-8-10
CHKD	DATE
APPD	DATE

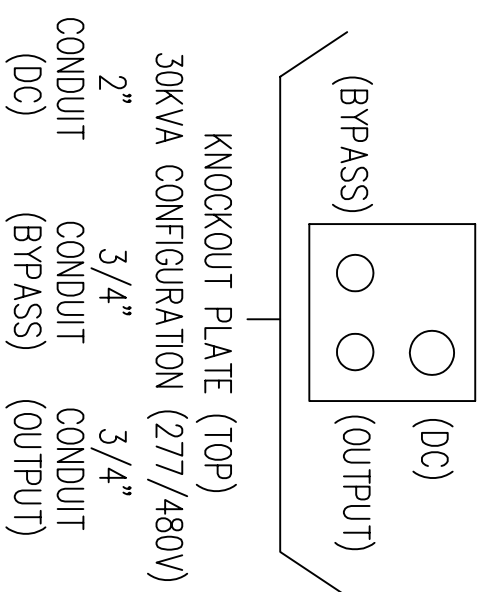
POWER SYSTEMS, INC.
ELYRIA, OHIO 44035-7822

30H48F

SHEET 1 OF 1

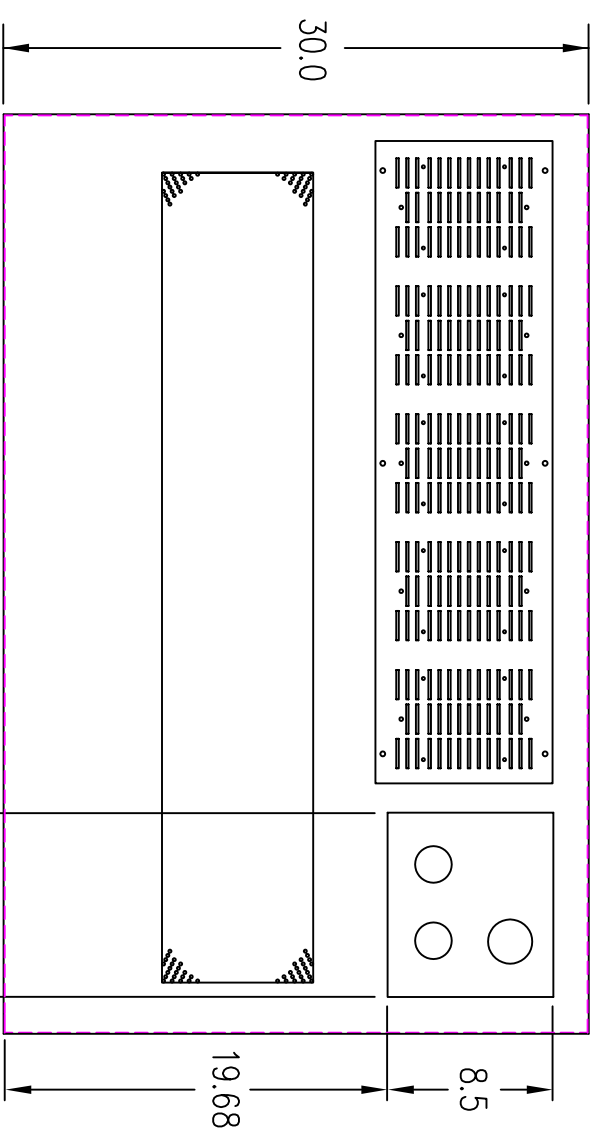
ISSUE 1

(VIEW FROM TOP OF CABINET)

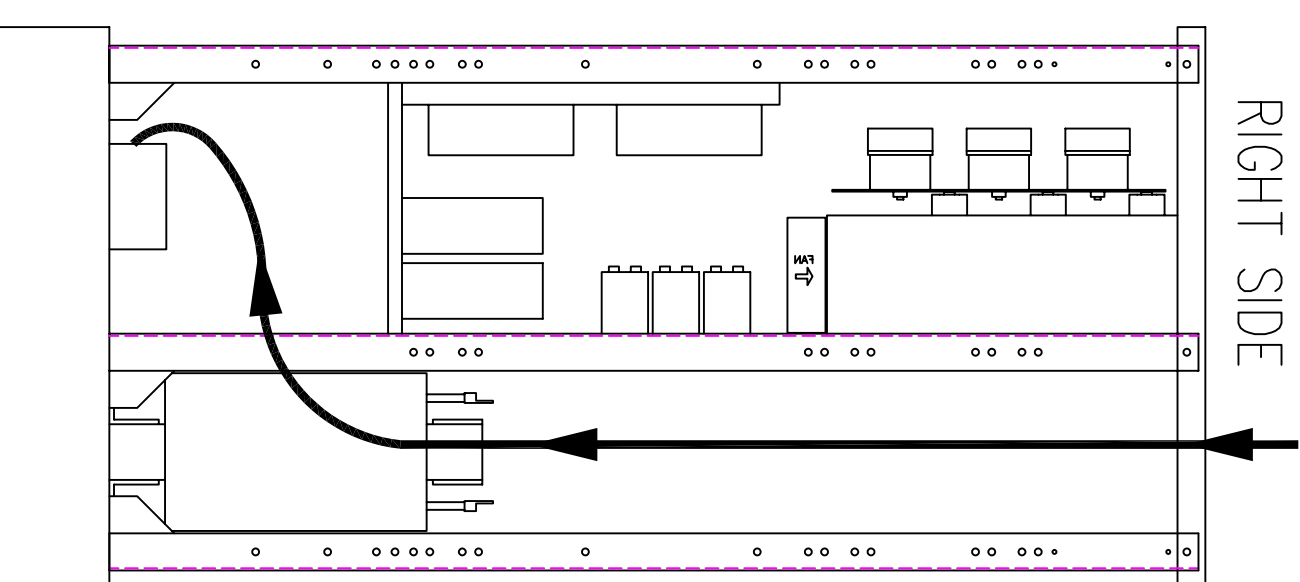


KNOCKOUT PLATE (TOP)
30KVA CONFIGURATION (277/480V)

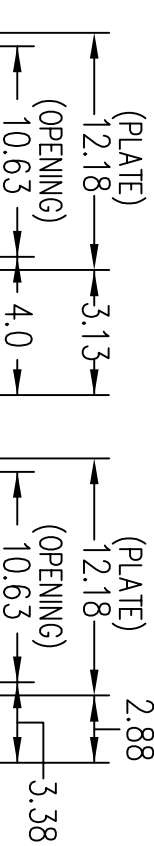
2" CONDUIT (DC)
3/4" CONDUIT (BYPASS)
3/4" CONDUIT (OUTPUT)



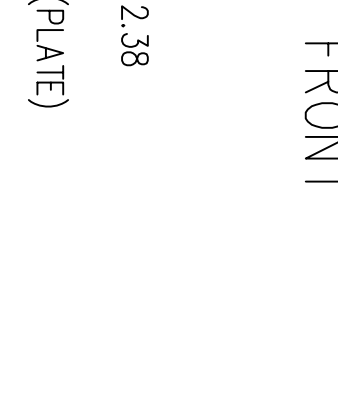
RIGHT SIDE



FRONT



FRONT



FOR TOP CABLE ENTRY, ROUTE WIRES DOWN RIGHT SIDE THROUGH OPEN AREA OF UPRIGHT CENTER PANEL TO TERMINALS LOCATED ON BASE PANEL.

TERMINATION CONFIGURATION (BOTTOM, FRONT)

TERMINAL BLOCK CAPACITY (BYPASS INPUT/AC OUTPUT): 14 TO 2/0 GA.

TERMINAL BLOCK CAPACITY (DC INPUT): (2) 500 MCM TO (2) 4 GA.

FRAME GROUND CAPACITY : 1/0 GA. TO 14 GA.



SYSTEM OUTPUT



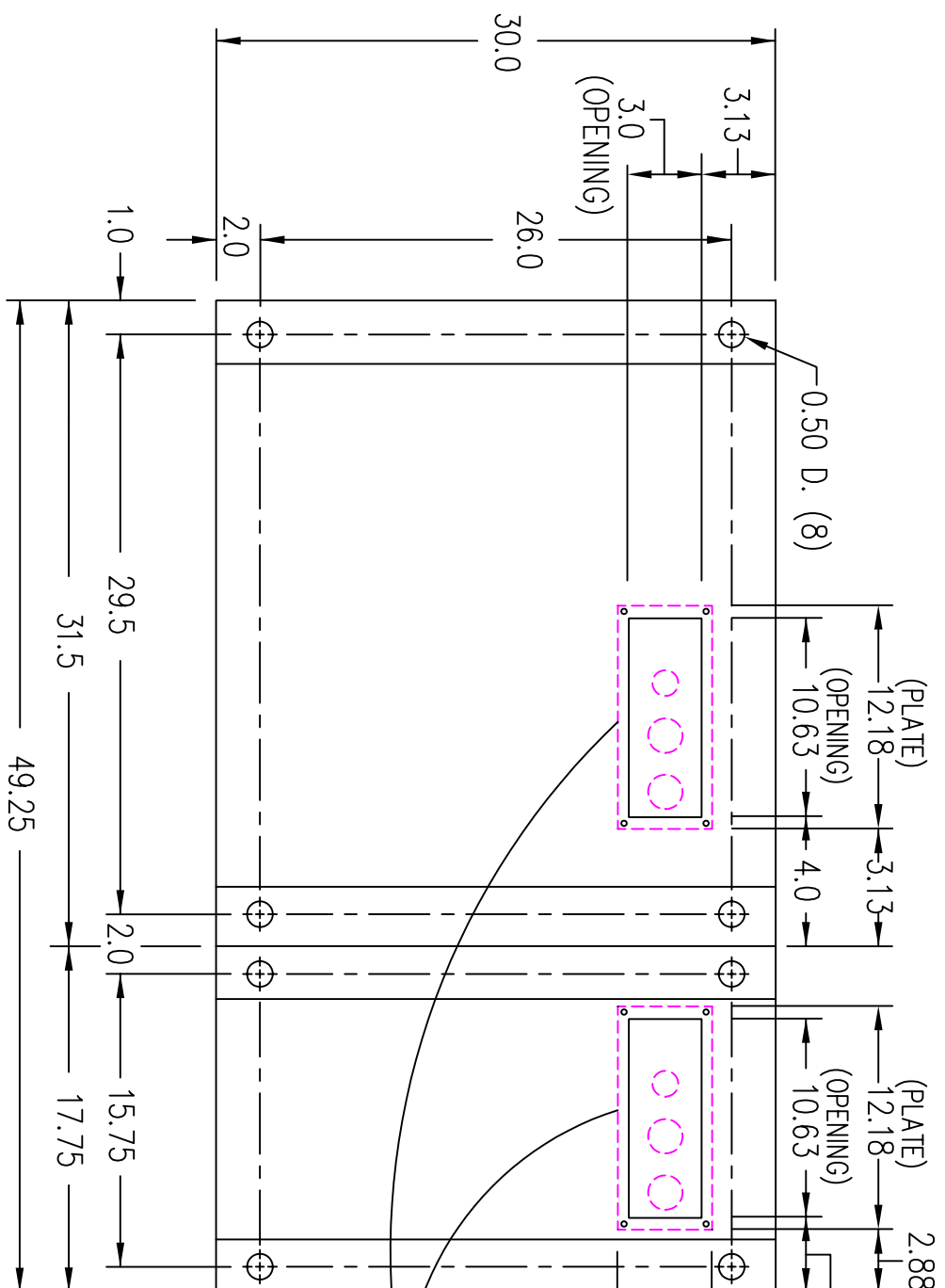
BYPASS INPUT



DC INPUT

NOTE: ALL DIMENSIONS ARE IN INCHES UNLESS OTHERWISE SPECIFIED.

(VIEW FROM BOTTOM OF CABINET)



LTI Power Systems, Inc.

30KVA INVERTER ASSEMBLY

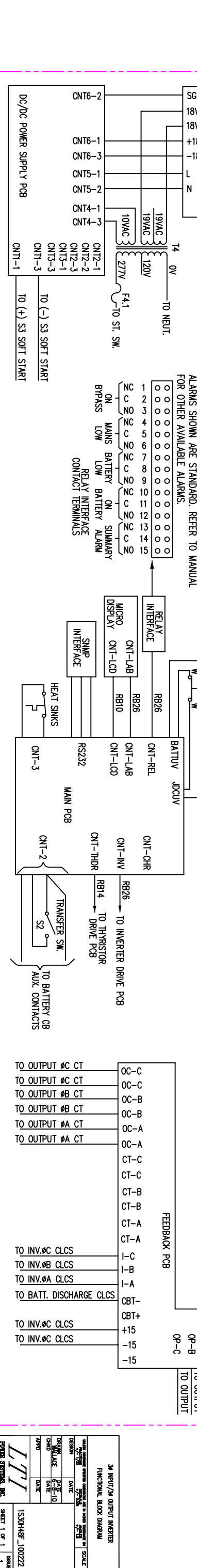
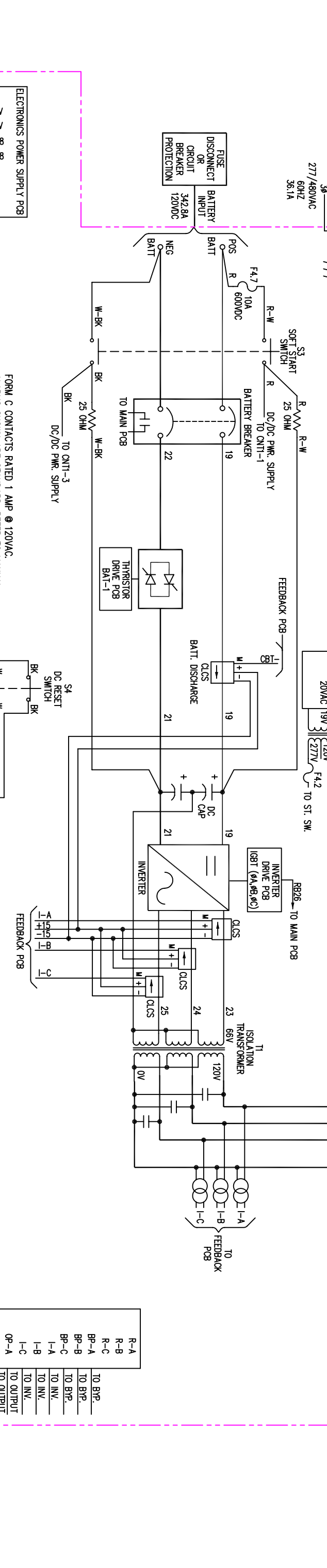
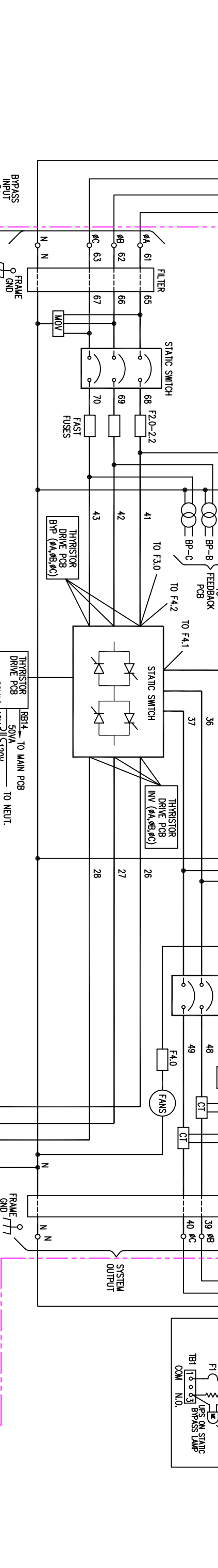
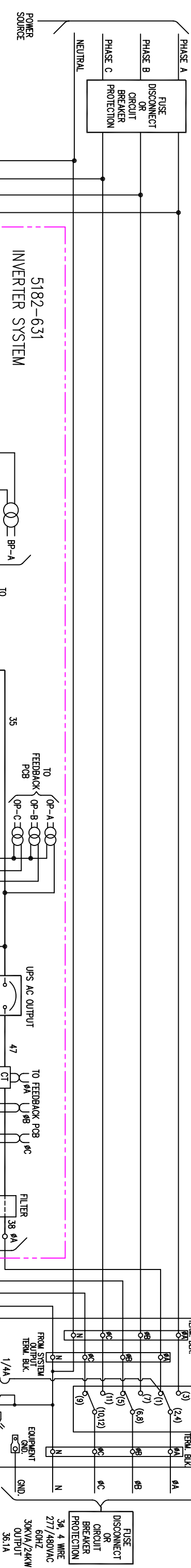
LTI-ProUPS

REV.

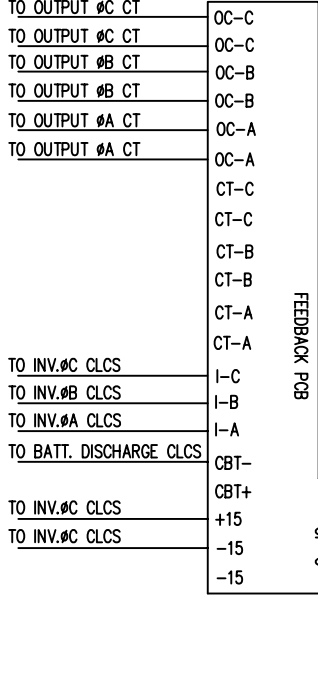
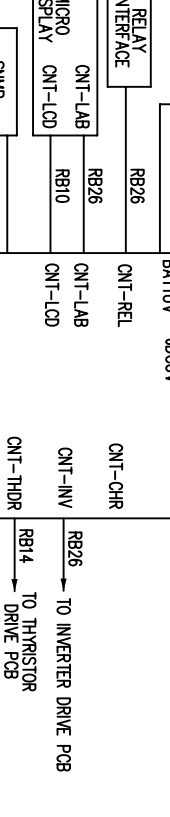
1

BYPASS INPUT/AC OUTPUT	277/480V	MAX. CURRENT	36.1A	BRKR. RATING	50A	A.I.C. RATING	25,000	TERM. CAPACITY	14-2/0 AWG	TORQUE	50 IN/LBS	RECM. SIZE	6 AWG	RECM. FUSING	60A	RECM. GND. SIZE	8 AWG	RECM. CONDUIT	3/4"
DC INPUT	120VDC	MAX. CURRENT	342.8A	BRKR. RATING	400A	A.I.C. RATING	35,000	TERM. CAPACITY	(2)500MCM (2)4 AWG	TORQUE	275 IN/LBS	RECM. SIZE	4/0 AWG	RECM. FUSING	450A	RECM. GND. SIZE	1/0 AWG	RECM. CONDUIT	2"

- NOTES:
1. WIRE SIZES BASED ON 90°C COPPER CONDUCTORS OPERATING IN 30°C AMBIENT AND NEC TABLES 250-95 AND 310-16. INCREASE CONDUCTOR SIZE FOR LONG RUNS.
 2. CLOCKWISE PHASE ROTATION MUST BE OBSERVED FOR BYPASS INPUT.
 3. CLCS = CLOSED LOOP CURRENT SENSOR



FORM C CONTACTS RATED 1 AMP @ 120VAC. ALARMS SHOWN ARE STANDARD. REFER TO MANUAL FOR OTHER AVAILABLE ALARMS.



3Ø INPUT/2Ø OUTPUT INVERTER FUNCTIONAL BLOCK DIAGRAM
DATE: 10/10/10
DESIGN: JMM
CHECKED: JMM
DATE: 10/10/10
APPD: JMM
ISSUE: 1

ROTOR SYSTEMS, INC.
ELECTRONIC 4232-2314