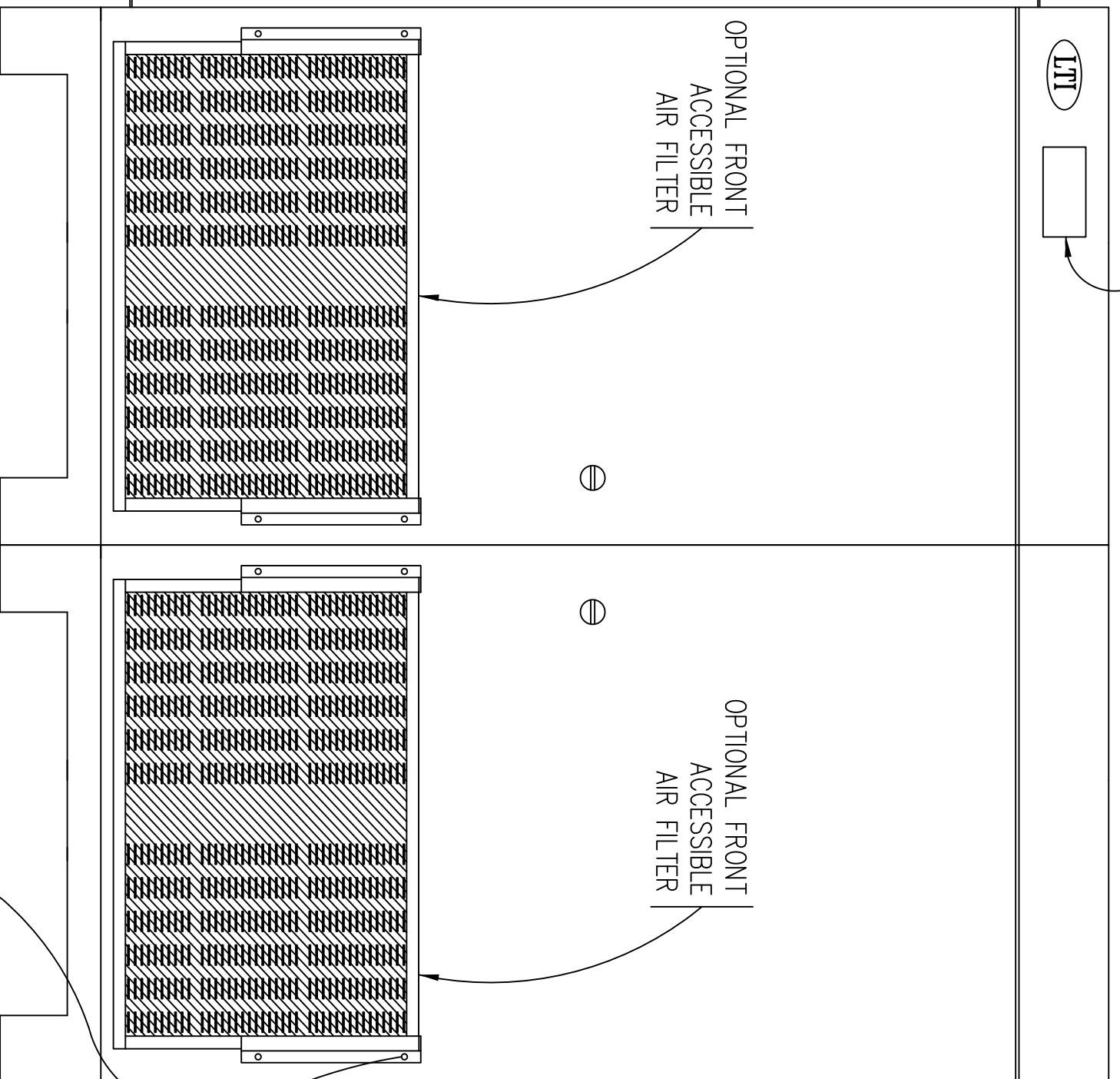
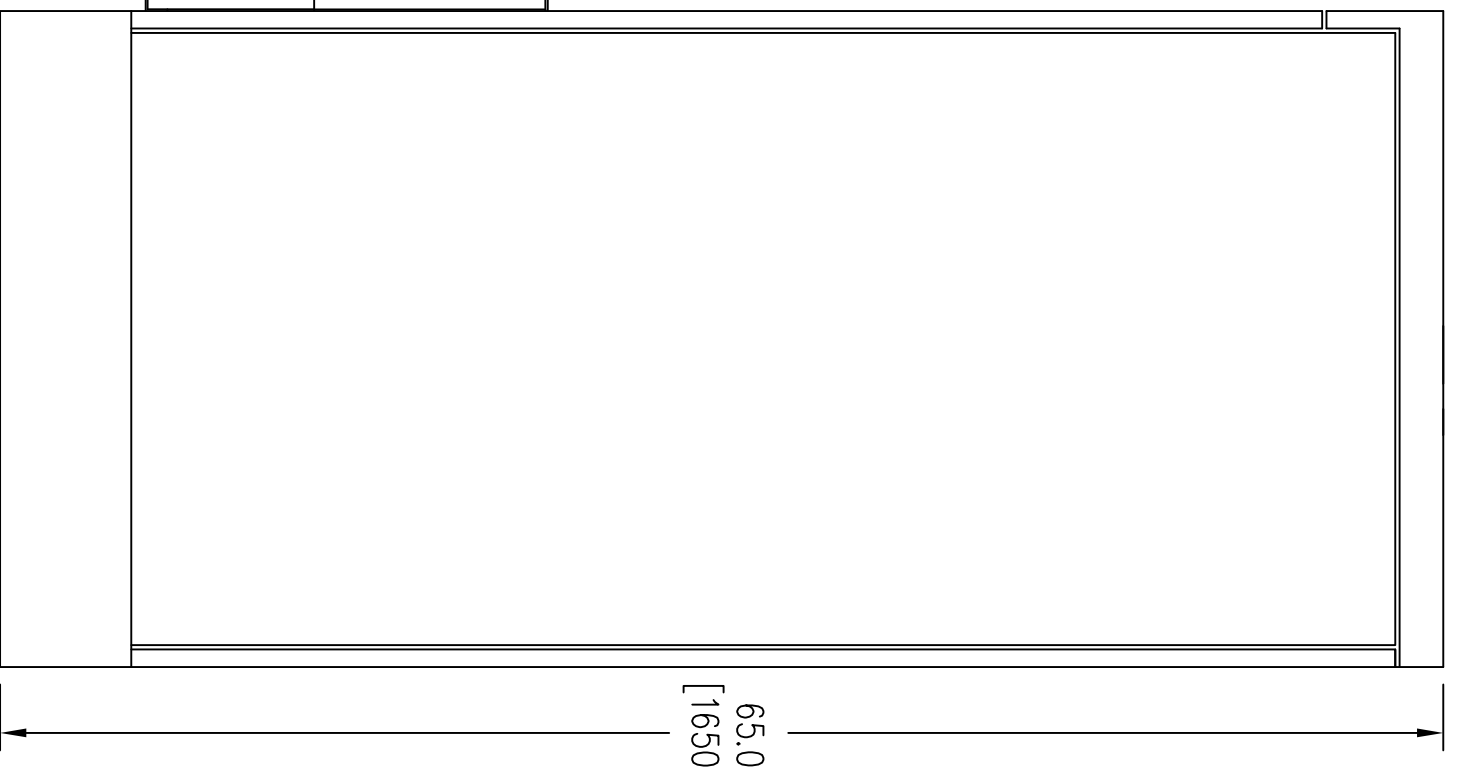


LEFT



FRONT



RIGHT

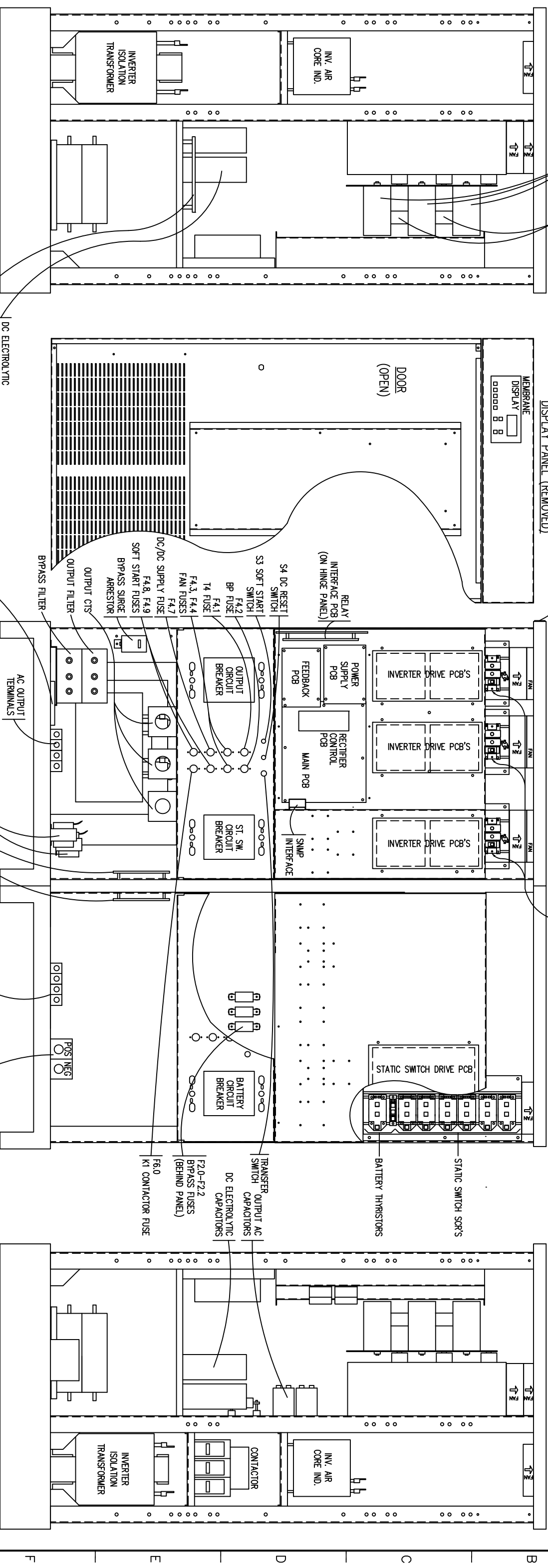
Notes: Unless otherwise specified, dimensions are in inches. Dimensions within brackets [] are in millimeters.
 Recommended clearance for serviceability is 36" [914] in the front and 6" [152] on the remaining sides.

TO REMOVE FRONT FILTER, REMOVE TOP SCREW FROM EACH SIDE BRACKET. ROTATE BRACKETS AWAY FROM FILTER, THEN SLIDE FILTER UP AND REPLACE AS NECESSARY.

ISS. NO.	CHG SLIP NO.	DATE	DESCRIPTION

REVISIONS

CAUTION: DURING INITIAL INSTALLATION VISUAL INSPECTION, CAREFULLY REMOVE THE PACKING MATERIAL BEHIND THE GATE DRIVE BOARD MOUNTING PANELS.



FORM C CONTACTS RATED 1 AMP @ 120VAC. ALARMS SHOWN ARE STANDARD. REFER TO MANUAL FOR OTHER AVAILABLE ALARMS.

1	2	3	4	5	6	7	8	9	10	11	12
○	○	○	○	○	○	○	○	○	○	○	○
○	○	○	○	○	○	○	○	○	○	○	○
○	○	○	○	○	○	○	○	○	○	○	○
○	○	○	○	○	○	○	○	○	○	○	○
○	○	○	○	○	○	○	○	○	○	○	○
○	○	○	○	○	○	○	○	○	○	○	○
○	○	○	○	○	○	○	○	○	○	○	○
○	○	○	○	○	○	○	○	○	○	○	○
○	○	○	○	○	○	○	○	○	○	○	○
○	○	○	○	○	○	○	○	○	○	○	○

ON MAINS BATTERY SUMMARY

BYPASS LOW BATTERY ALARM

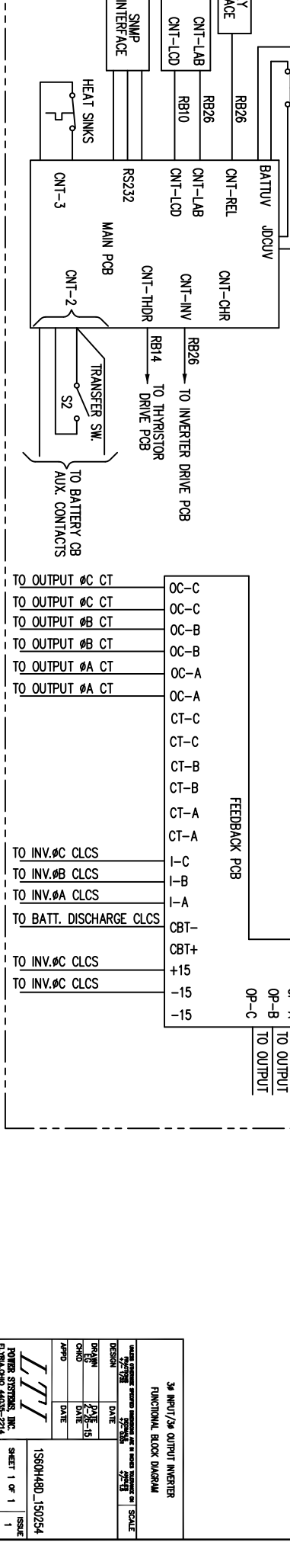
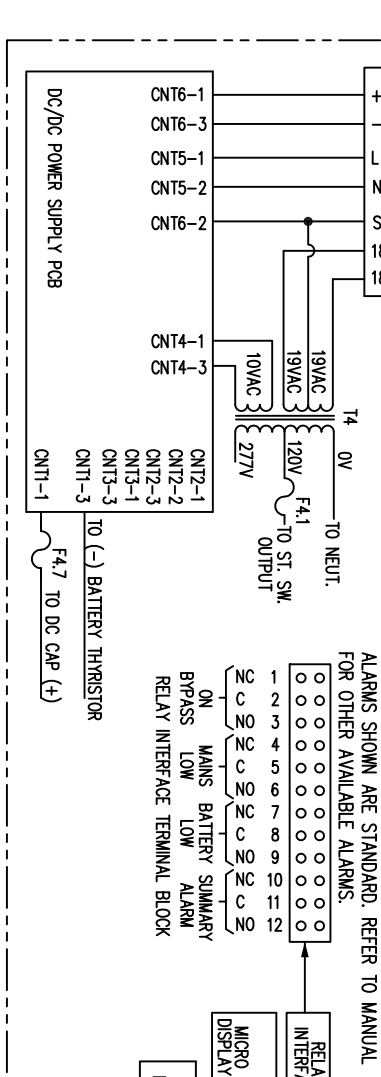
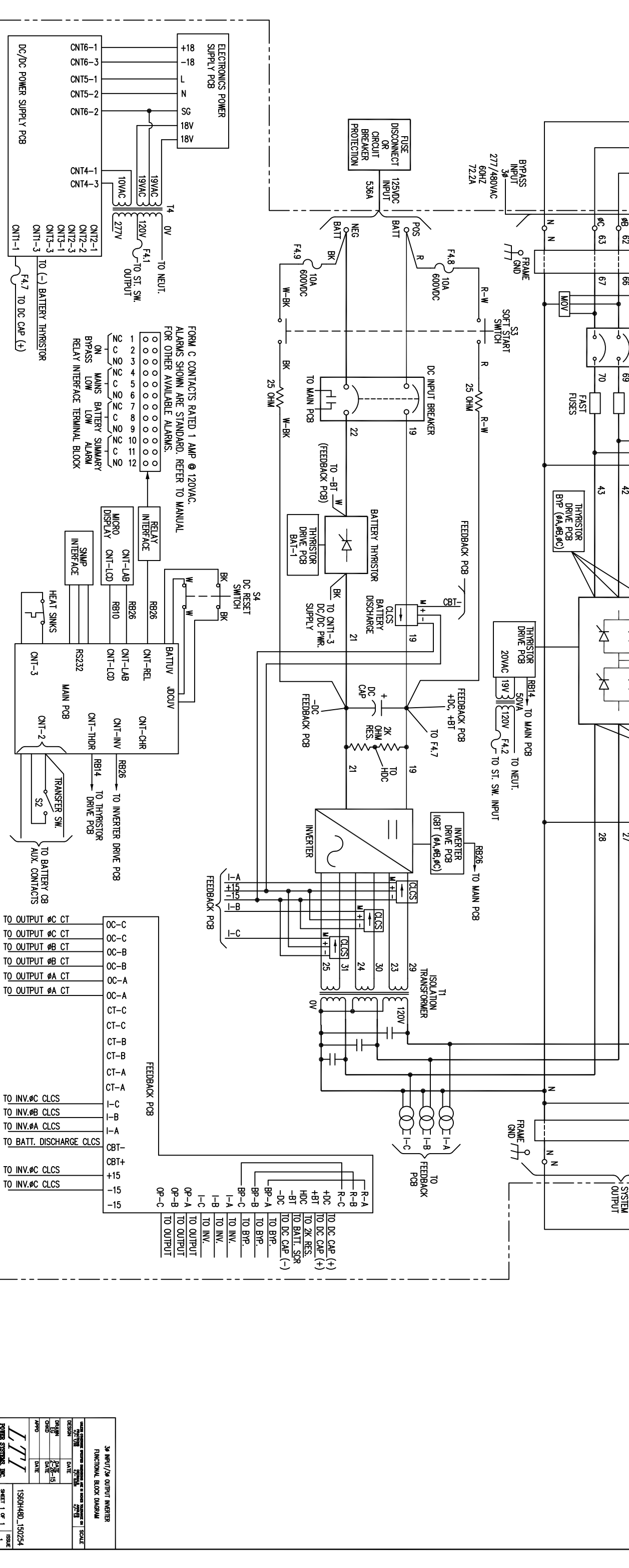
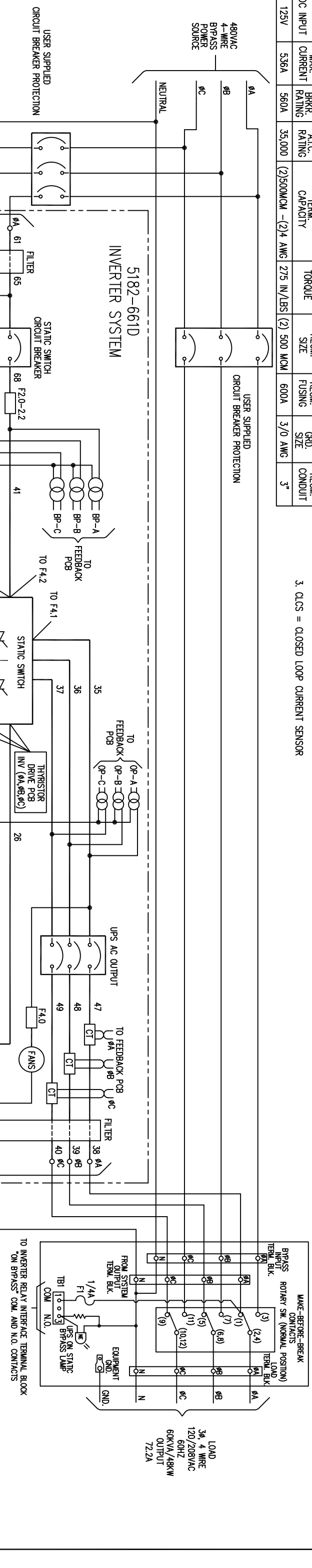
COMPONENT LOCATION DRAWING
FOR
60KVA, 480V OUTPUT
125VDC INVERTER SYSTEM

UNLESS OTHERWISE SPECIFIED DIMENSIONS ARE IN INCHES TOLERANCE ON FINISHES +/-.1/32 DIMENSIONS +/-.0001 ANGLES +/-.15°	SCALE
DESIGN	DATE
DRAWN	DATE
EG	2-26-15
CHKD	DATE
APPRD	DATE
POWER SYSTEMS, INC. ELYRIA, OHIO 44035-7822	60H48D_150254
SHEET 1 OF 1	ISSUE 1

BYPASS INPUT/AC OUTPUT	MAX. CURRENT	CKT. BRKR. RATING	A.I.C. RATING	TERM. CAPACITY	TORQUE	RECM. SIZE	RECM. FUSING	RECM. GND. SIZE	RECM. CONDUIT
277/480V	72.2A	100A	25,000	6 AWG-350 MCM	275 IN./LBS	2 AWG	100A	8 AWG	1-1/4"
DC INPUT	MAX. CURRENT	CKT. BRKR. RATING	A.I.C. RATING	TERM. CAPACITY	TORQUE	RECM. SIZE	RECM. FUSING <td>RECM. GND. SIZE</td> <td>RECM. CONDUIT</td>	RECM. GND. SIZE	RECM. CONDUIT
125V	536A	560A	35,000	(2)500MCM-(2)4 AWG	275 IN./LBS (2) 500 MCM	600A	3/0 AWG	3"	

- NOTES:
1. WIRE SIZES BASED ON 90°C COPPER CONDUCTORS OPERATING IN 30°C AMBIENT AND NEC TABLES 250-95 AND 310-16. INCREASE CONDUCTOR SIZE FOR LONG RUNS.
 2. CLOCKWISE PHASE ROTATION MUST BE OBSERVED FOR BYPASS INPUT.
 3. CLCS = CLOSED LOOP CURRENT SENSOR

4232-909
MAINTENANCE BYPASS ENCLOSURE



DATE	DESCRIPTION	BY	CHKD
15/01/01	REVISED TO ADD BATTERY SUPPLY
15/01/01	REVISED TO ADD BATTERY SUPPLY
15/01/01	REVISED TO ADD BATTERY SUPPLY
15/01/01	REVISED TO ADD BATTERY SUPPLY

3Ø INPUT/2Ø OUTPUT INVERTER
FUNCTIONAL BLOCK DIAGRAM

POWER SYSTEMS, INC.
1580HARD_150254
SHEET 1 OF 1